

ADAMERA MINERALS CORP

FOCUSED ON DISCOVERY

Q1 2022

TSX-V: ADZ OTC: DDNFF

Forward Looking Statement

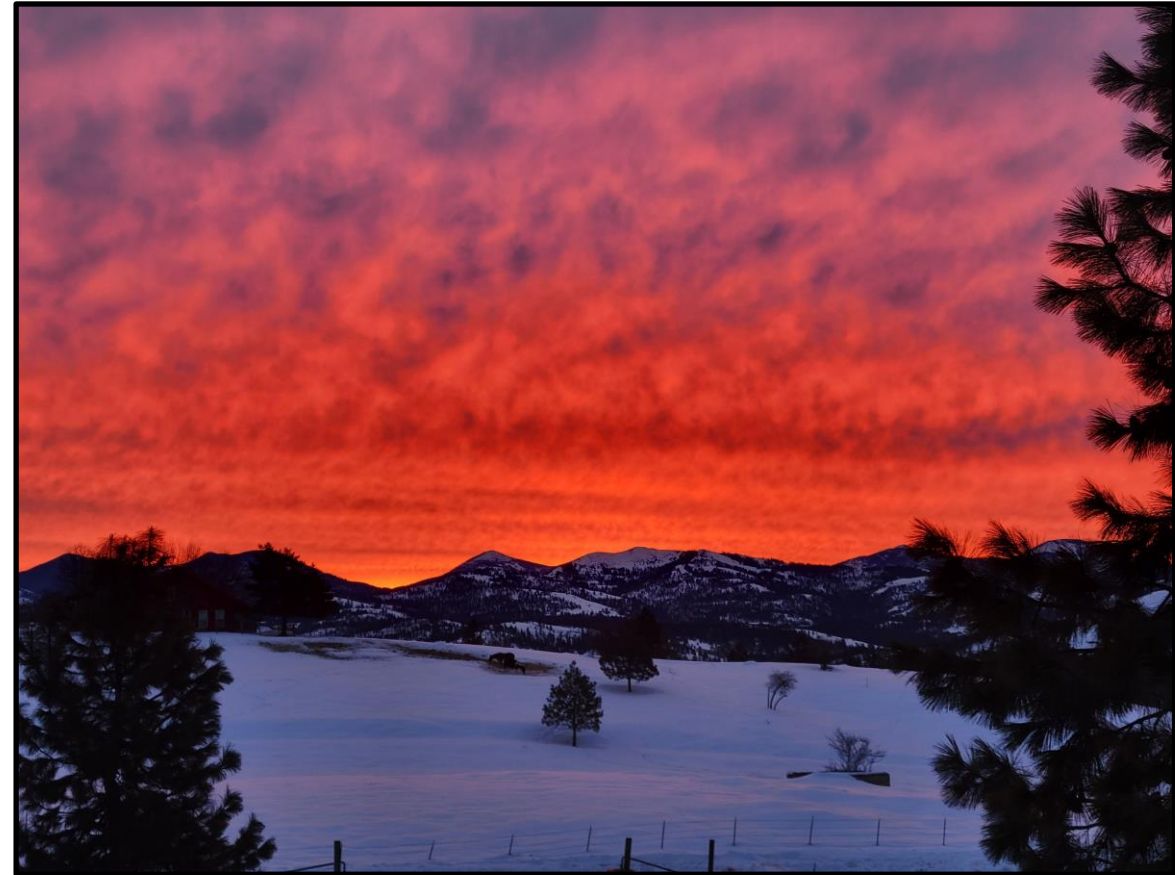
Information in this presentation may be forward looking. Forward looking information is subject to known and unknown risks, uncertainties and other factors, including potentially inaccurate assumptions, which may cause the actual results, performance or achievements to be materially different from the future results, performance or achievements expected or implied by the forward looking information which speaks only as of the date of this presentation. No invitation to purchase securities is being made. Project QP's are listed in the news release on the company's website. For more detailed information about the Company, please see our Annual Information form, Financial Statements, and other materials available from www.sedar.com

View from Buckhorn 2.0 project to the Buckhorn Mine



ADAMERA MINERALS

1. Exploration Strategy
2. The District Potential
3. Buckhorn 2.0 Gold Project
 - Recently Drilled Sulfide Zones
4. Lamefoot South Gold Project
 - Recently Discovered High-Grade Gold



TARGETING HIGH-GRADE GOLD

Properties near past producers

Lower Risk Brownfield Exploration

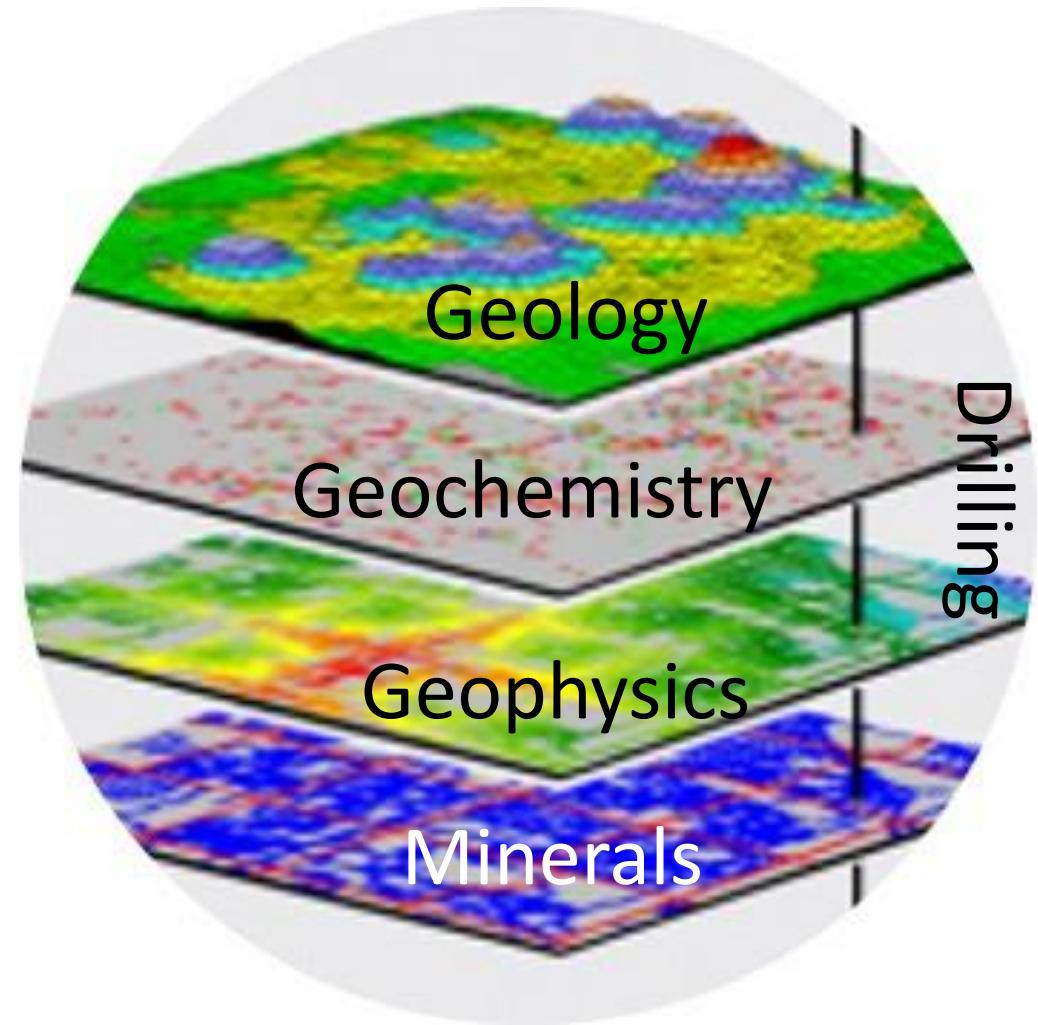


Exploring in the Shadow
of a Headframe

TARGETING HIGH-GRADE GOLD

High resolution surveys
to find unexposed mineralization

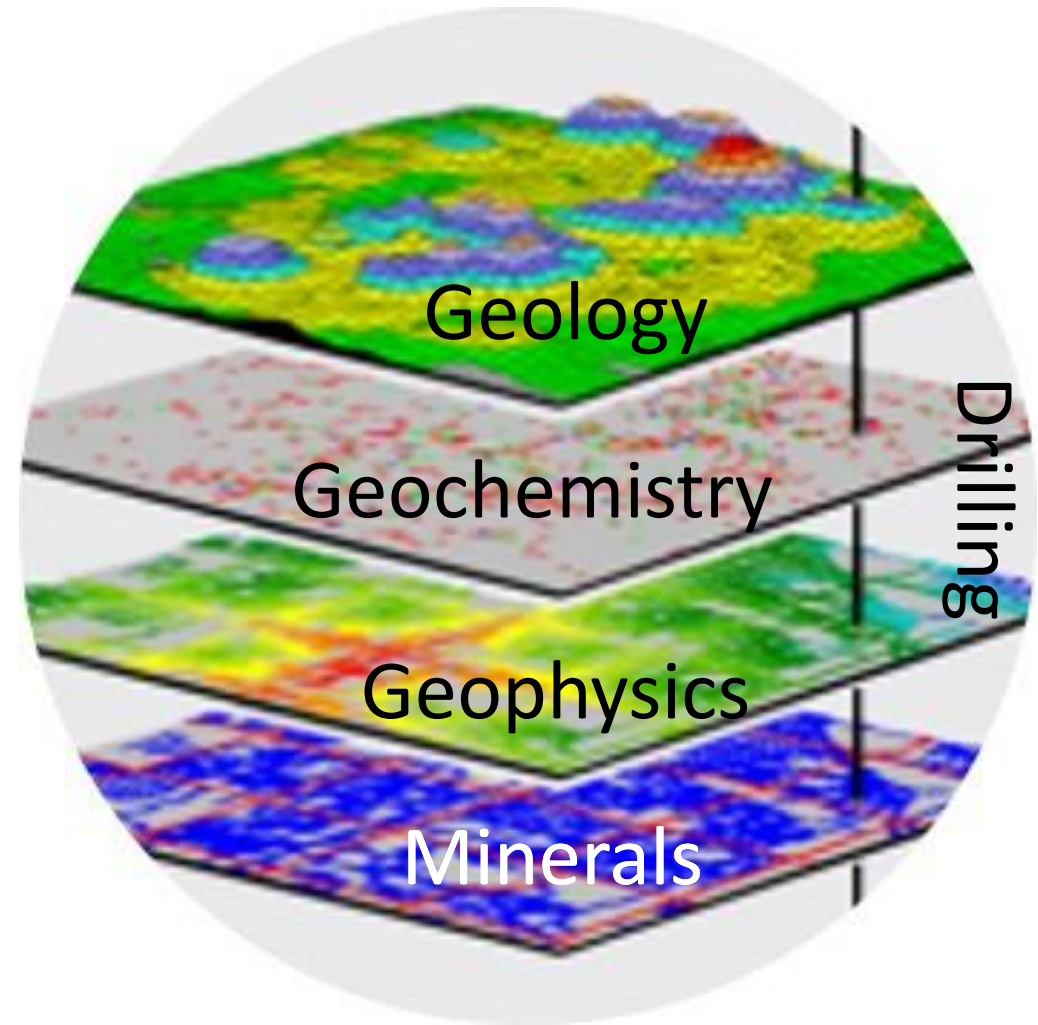
New methods to find what was missed



RESULTS FOR 2022

HIGH-GRADE GOLD

- New Discovery at Lamfoot South
- New High-grade at Buckhorn 2.0

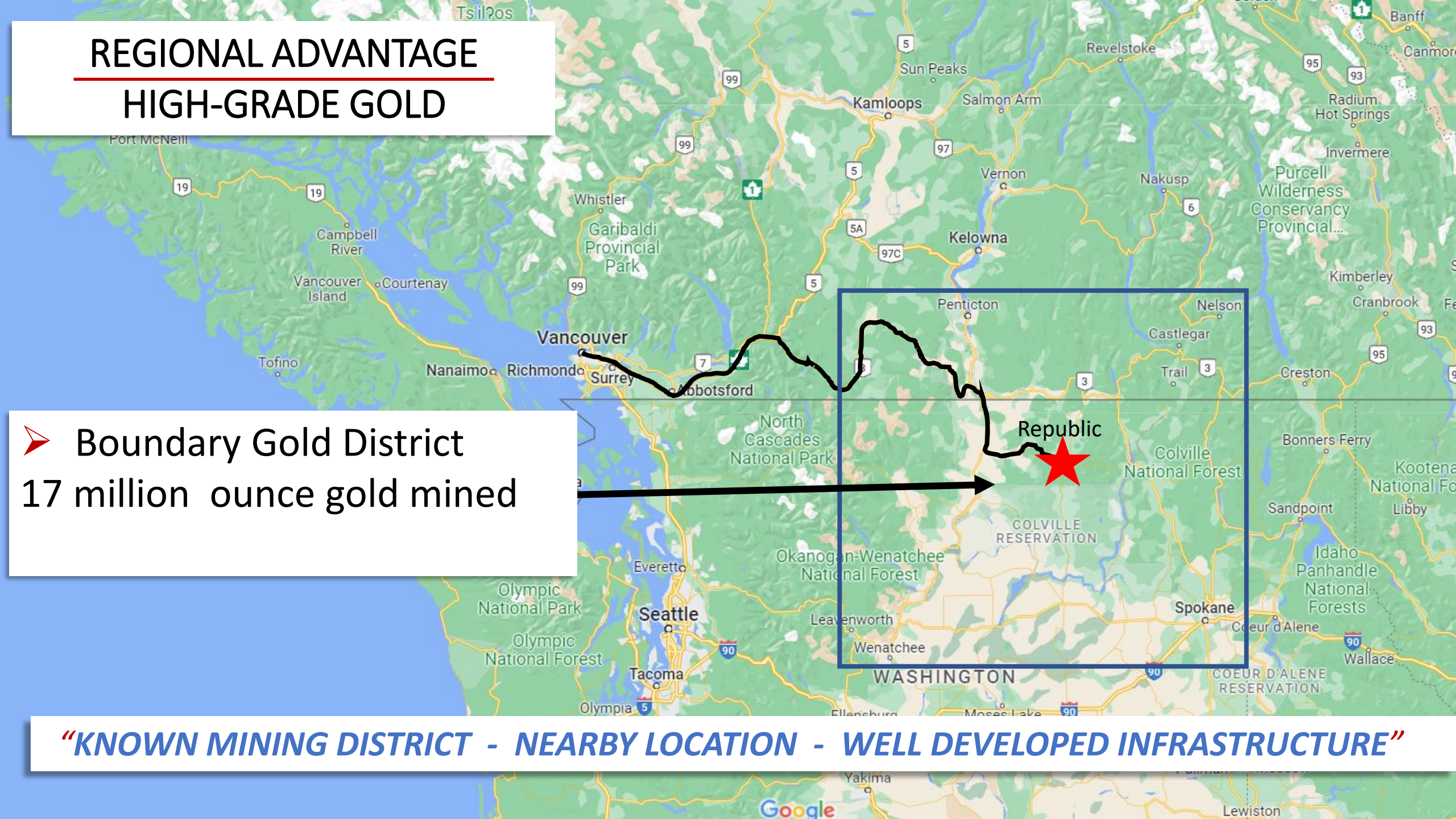


REGIONAL ADVANTAGE

HIGH-GRADE GOLD

➤ Boundary Gold District
17 million ounce gold mined

“KNOWN MINING DISTRICT - NEARBY LOCATION - WELL DEVELOPED INFRASTRUCTURE”

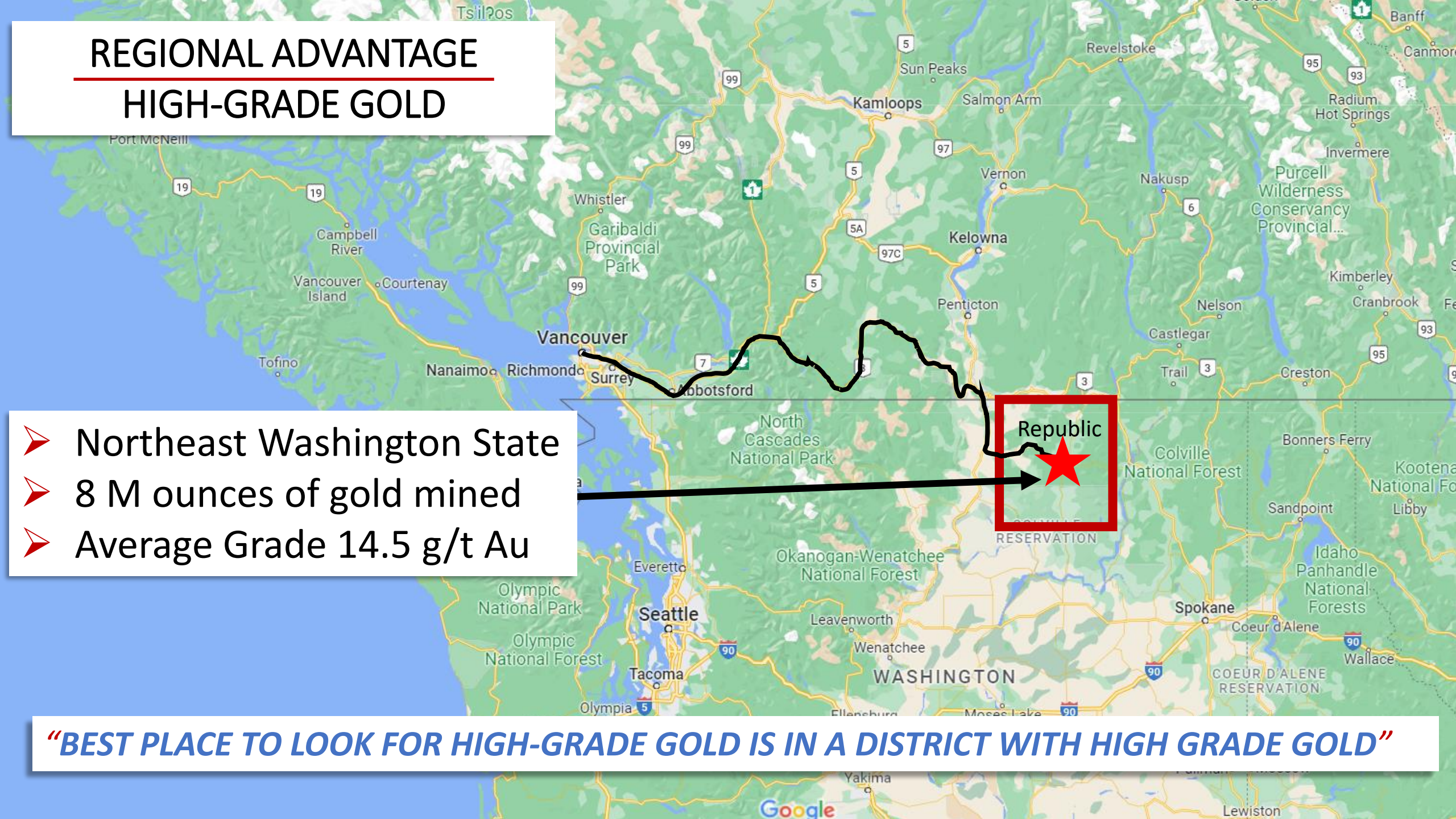


REGIONAL ADVANTAGE

HIGH-GRADE GOLD

- Northeast Washington State
- 8 M ounces of gold mined
- Average Grade 14.5 g/t Au

“BEST PLACE TO LOOK FOR HIGH-GRADE GOLD IS IN A DISTRICT WITH HIGH GRADE GOLD”



PROPERTY PROXIMAL TO MINES

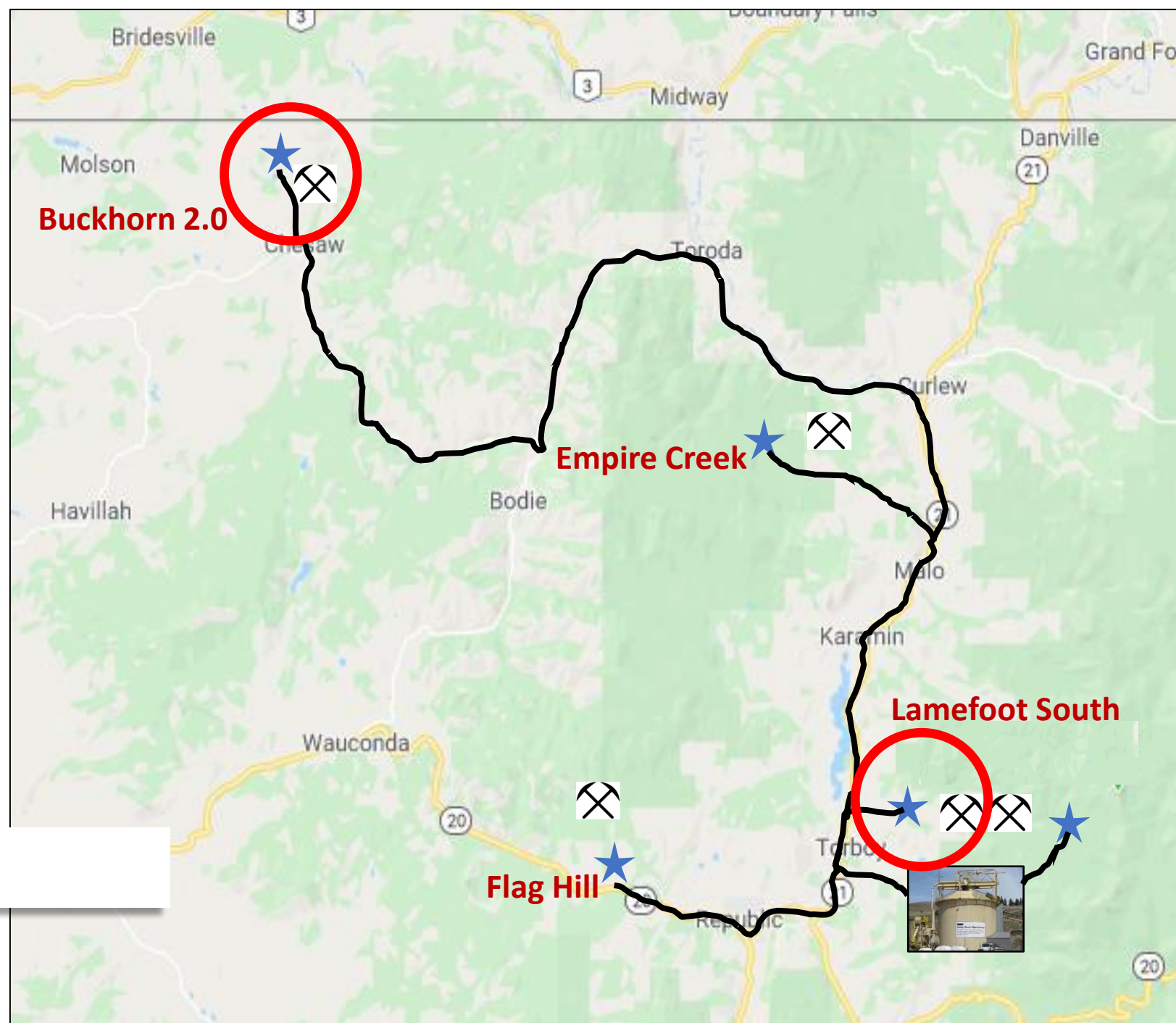


“THE BEST PLACE TO LOOK FOR A MINE IS NEXT TO A MINE”

NEARBY MILL ROAD ACCESS

- 2000 TON/DAY MILL
- DISTANCE FROM MILL 5 TO 80 KM

“ALL ROADS LEAD TO A MILL”



DRILLING BUCKHORN 2.0

New High-Grade Zones

Assays Pending

Exploration Calibration
Methods and Strategy Working



DRILLING 2022

BUCKHORN 2.0

VTEM15 – 69 m zone with sulfides

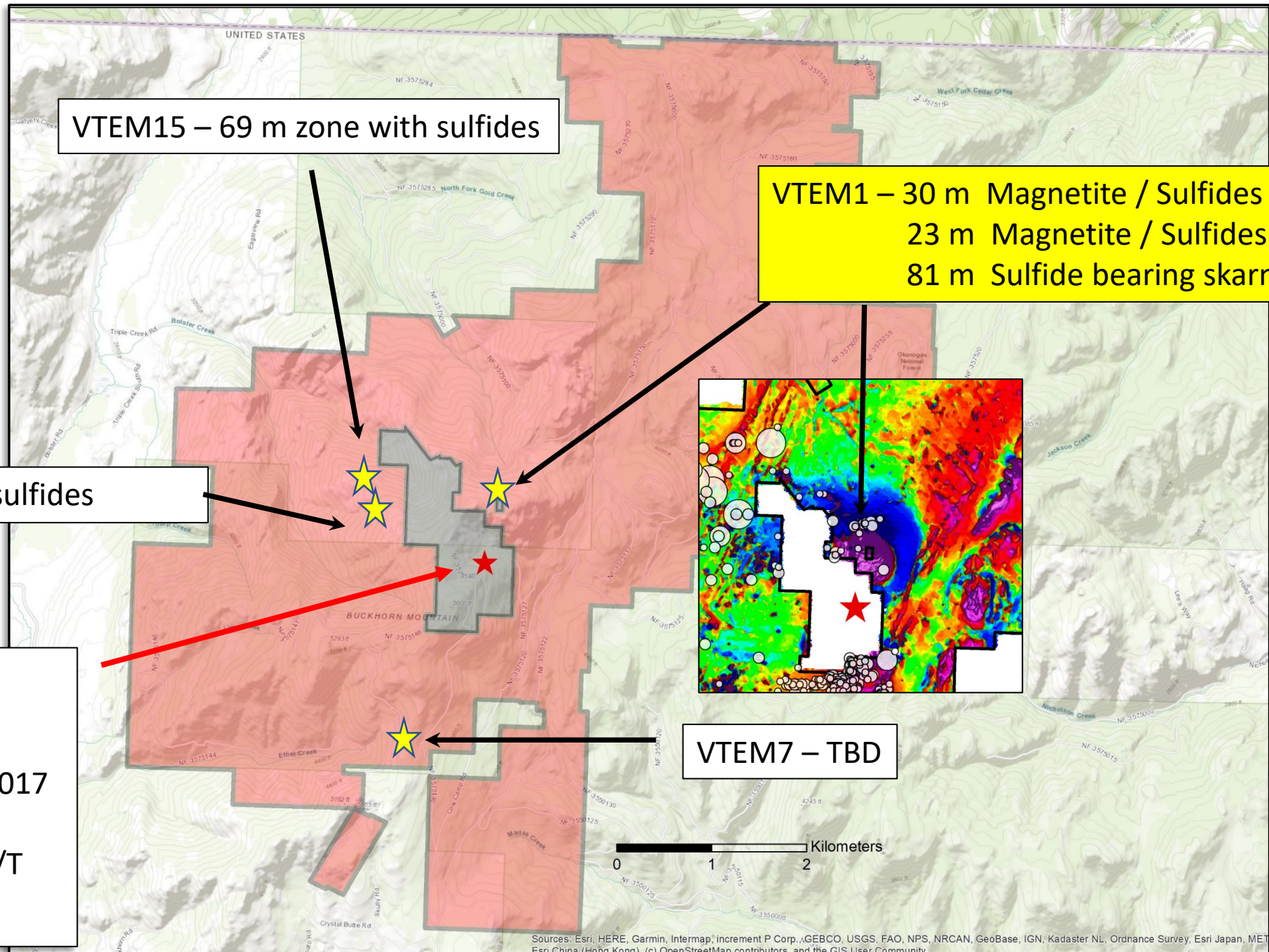
VTEM1 – 30 m Magnetite / Sulfides
23 m Magnetite / Sulfides
81 m Sulfide bearing skarn

SP-1 – 40 m Sulfides zone sulfides

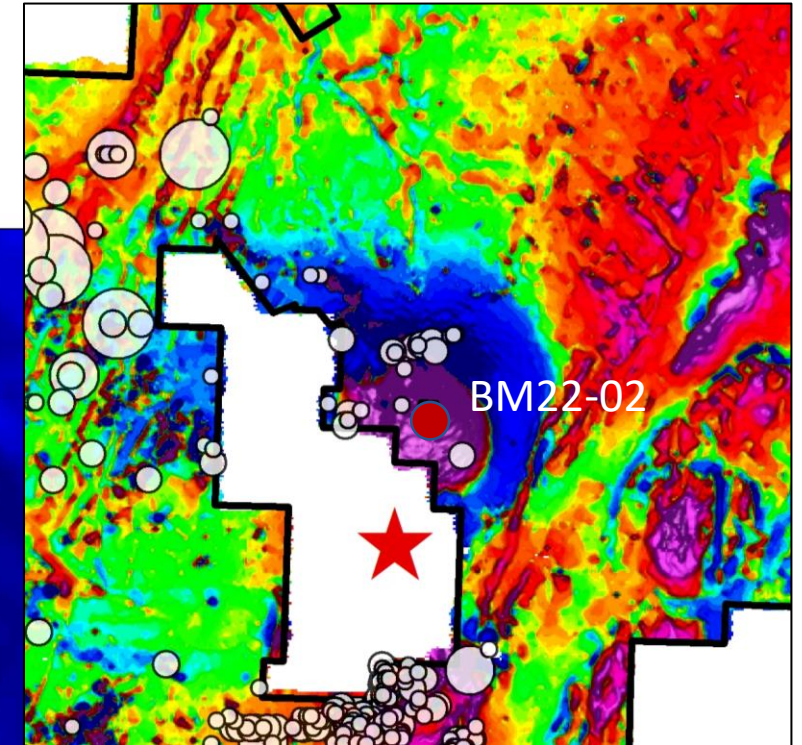
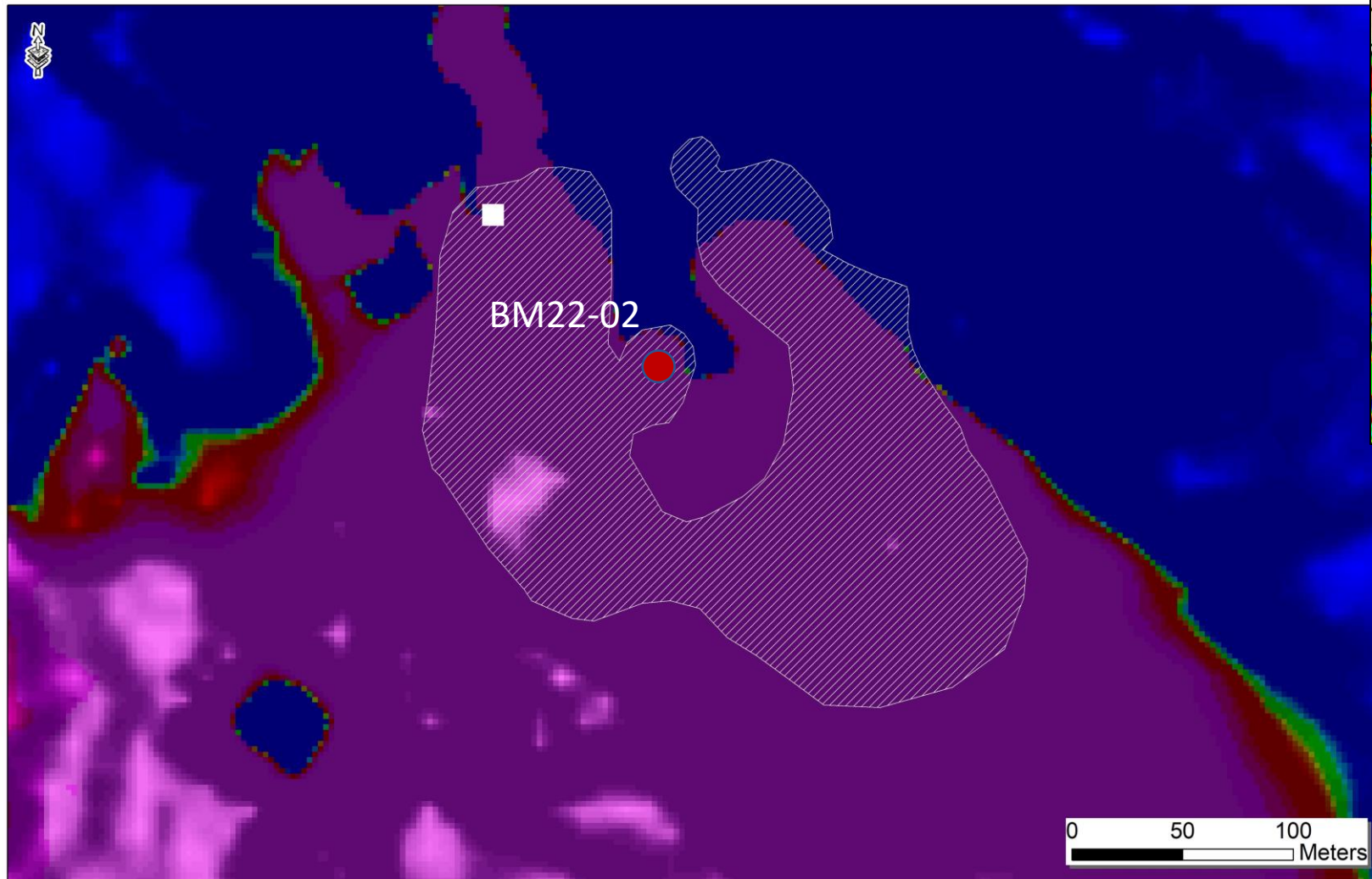
BUCKHORN MINE

- MINED BY KINROSS 2008 -2017
- 1.3 M OZ AU ~ GRADE 13 G/T

VTEM7 – TBD



MAGNETIC DATA INVERSION



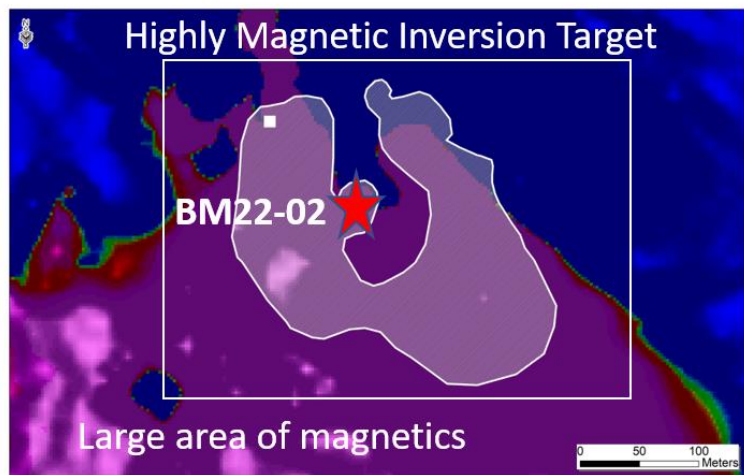
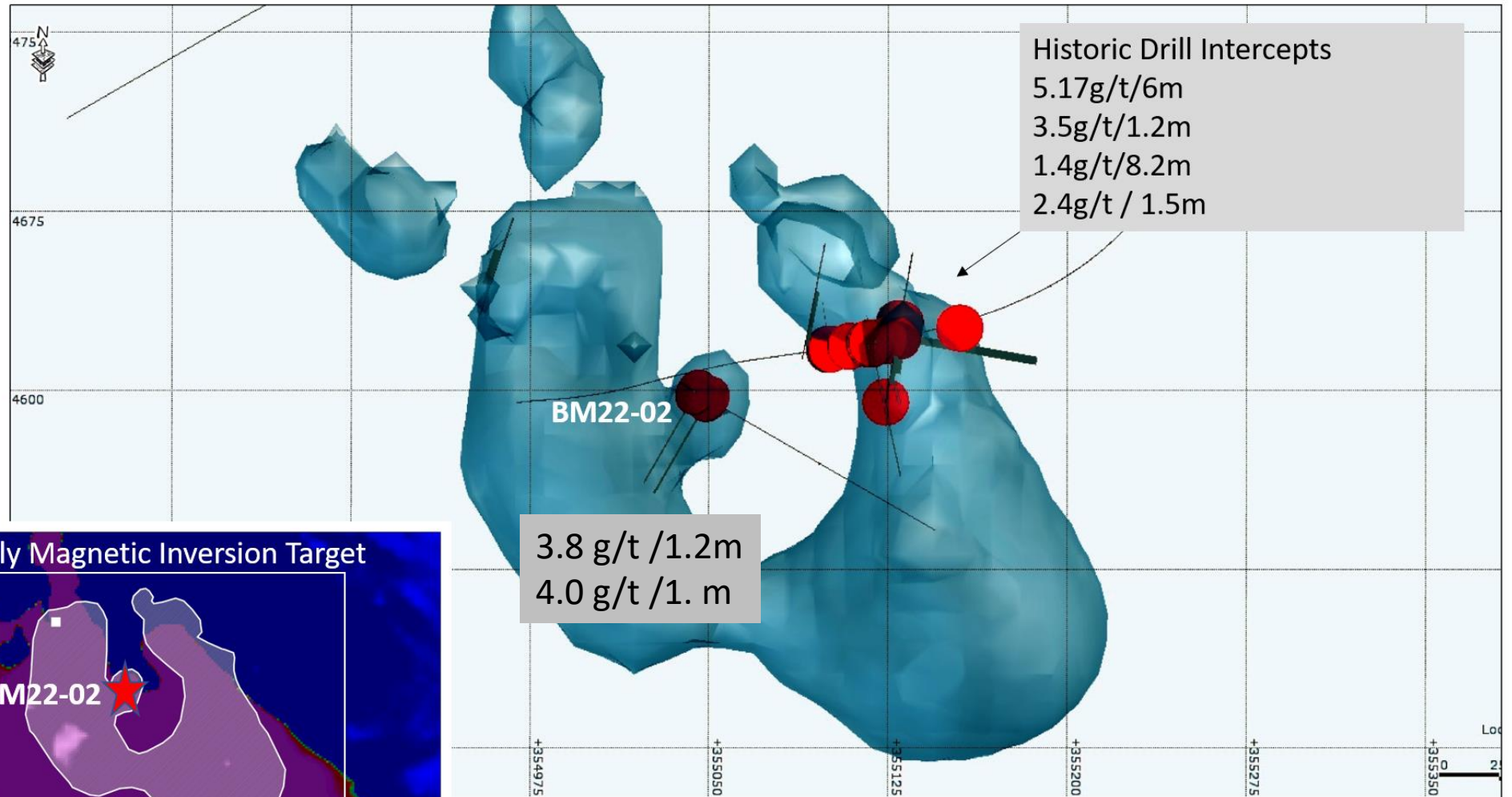
Recent Inversion Of Magnetic Data Has Identified A More Discreet Target With A Highly Magnetic Response

VTEM 1 TARGET

BM 22-02

Historic drill intercepts

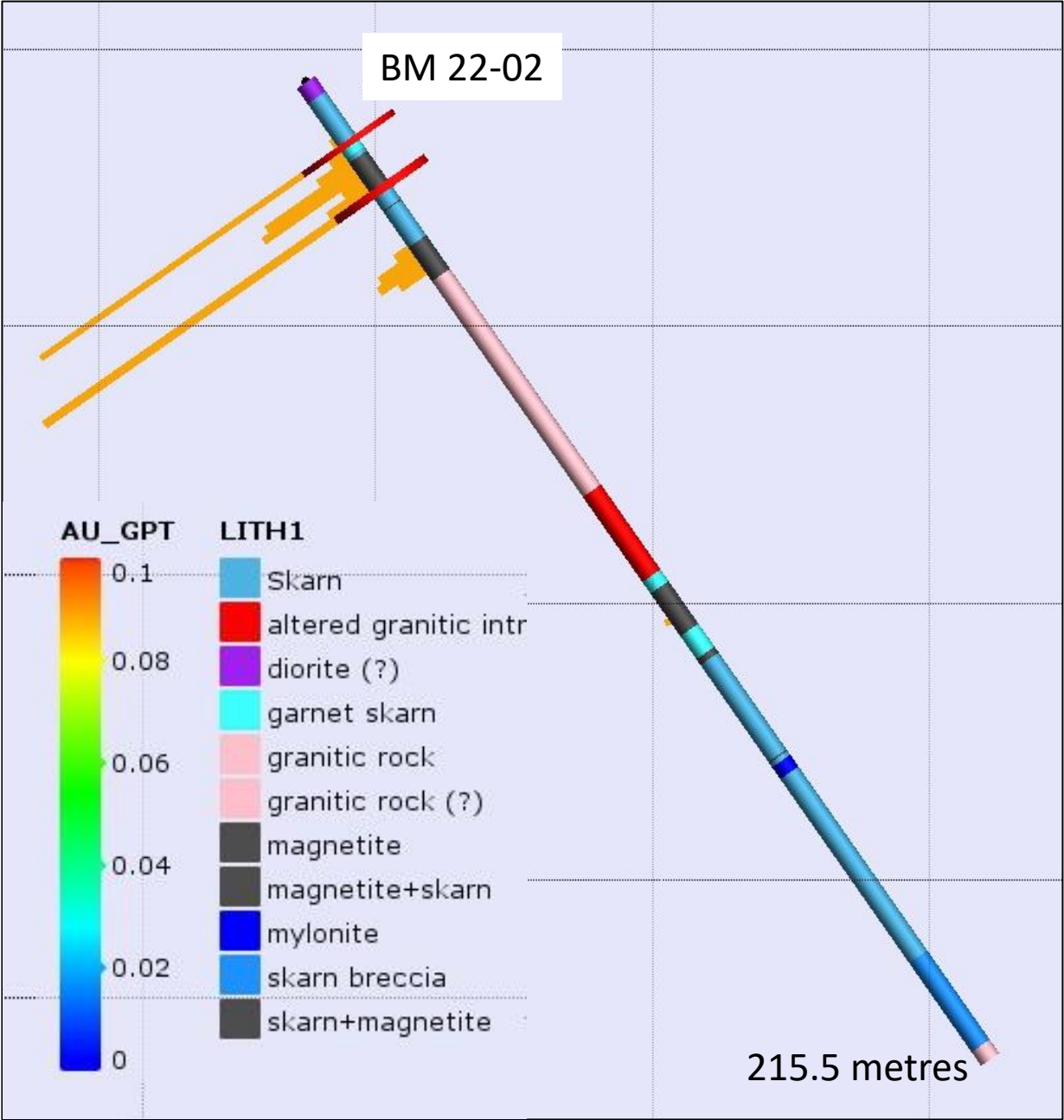
5.17 g/t / 6m
3.5 g/t / 1.2m
1.4 g/t / 8.2m
2.4 g/t / 1.5m



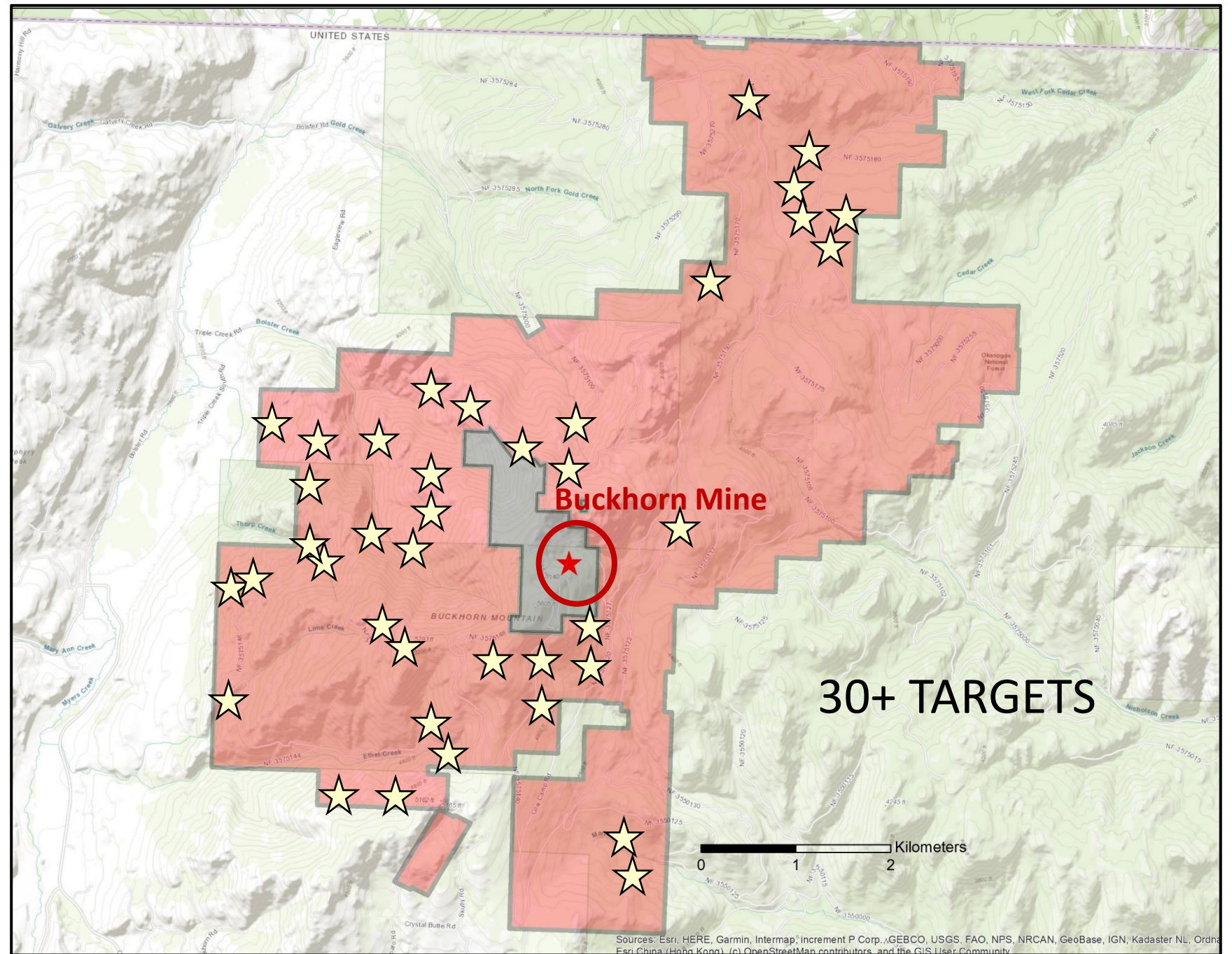
RESULTS FOR BM 22-02

HIGH-GRADE GOLD

Zone	From (m)	To (m)	Interval (m)	Gold (g/t)
Upper	12.8	14	1.2	3.8
Magnetite	14	22.8	8.8	0.2
Lower	22.8	24.4	1.6	4.0



2023 BUCKHORN 2.0 NUMEROUS TARGETS TO DRILL



LAMEFOOT SOUTH
NEW DISCOVERY

4.5 m of 10.5 g/t gold

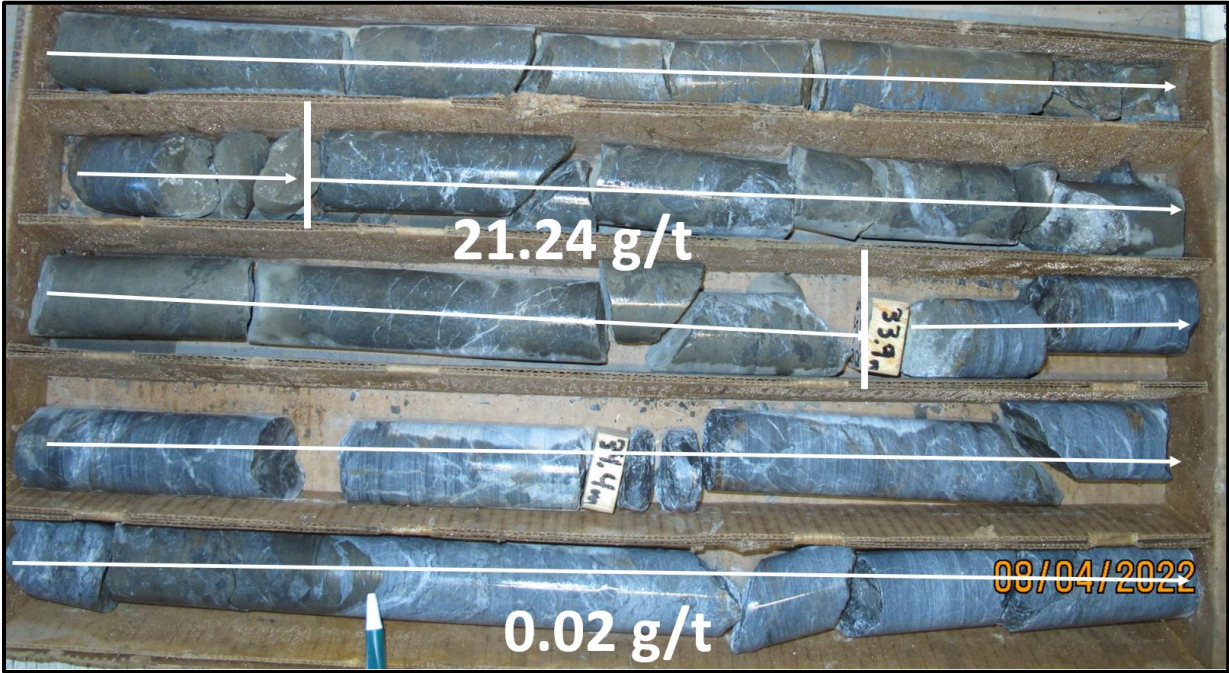
FOLLOW UP DRILLING UNDERWAY



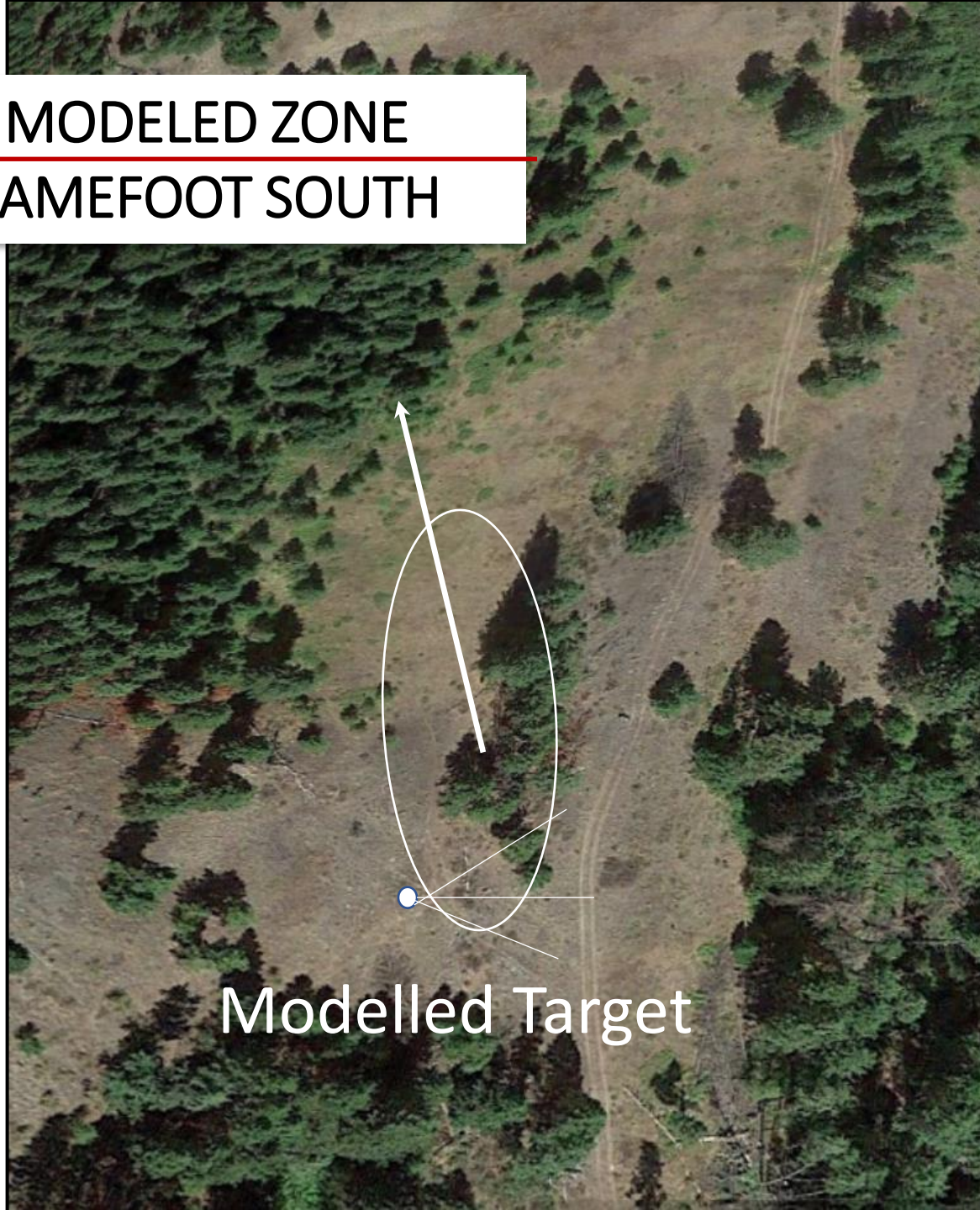
MINERALIZATION
LAMEFOOT SOUTH

From ^(m)	To ^(m)	Interval	Au (g/t)
29.57	33.99	4.4	10.51
29.57	30.94	1.37	4.54
31.70	32.92	1.22	14.31
32.92	33.99	1.07	21.24

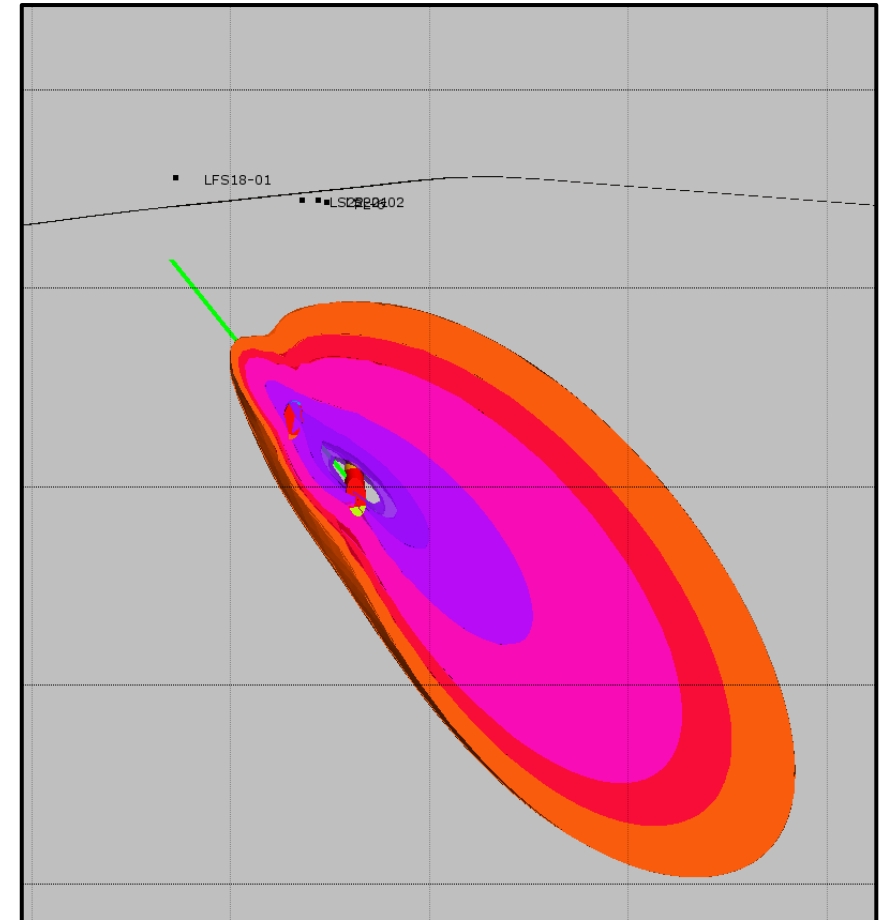
} 2.30m
@
17.5 g/t Au



MODELED ZONE LAMEFOOT SOUTH



Modelled Target



Modelled X-section

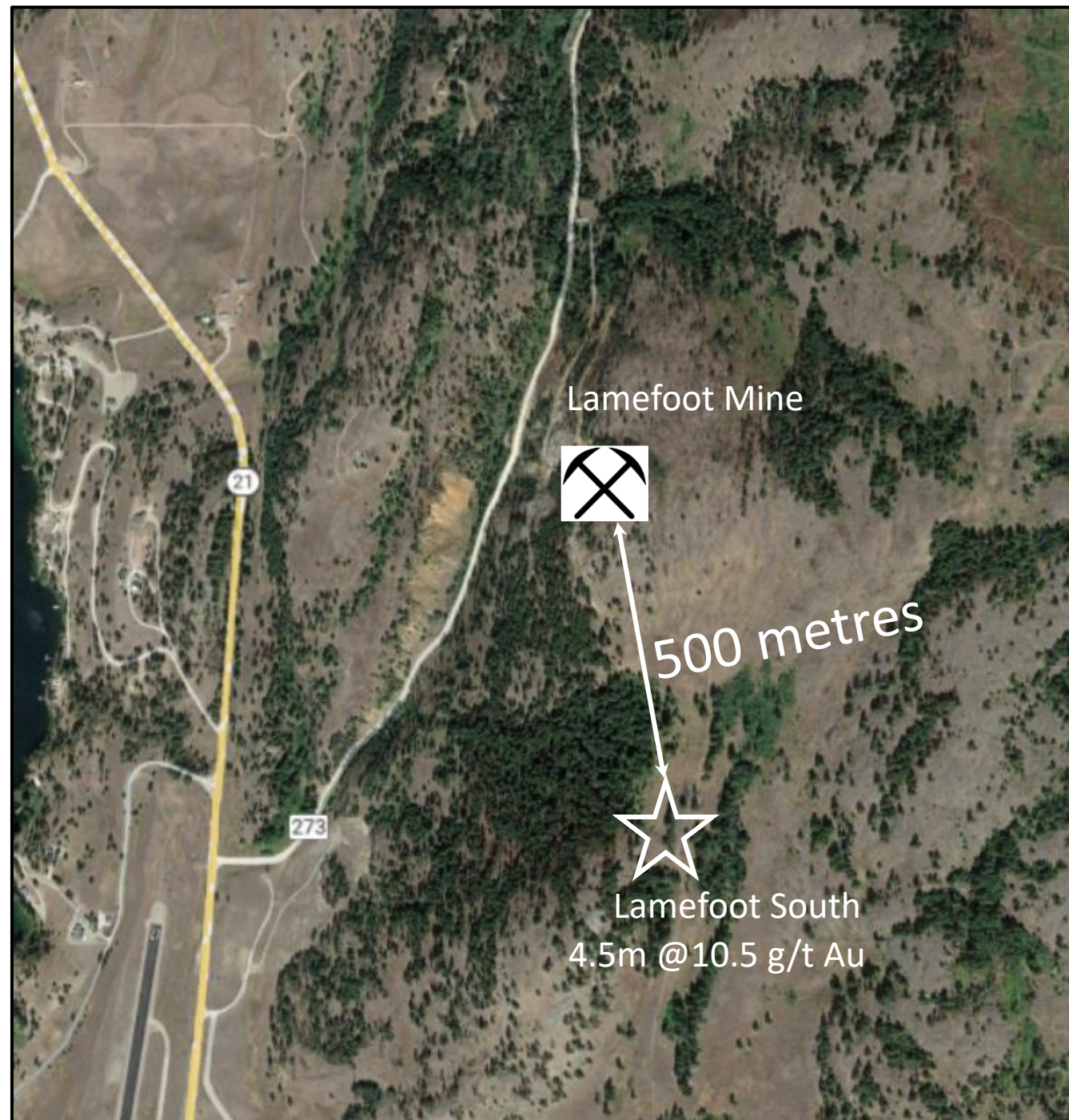
LAMEFOOT SOUTH PROXIMAL TO MINE

New Discovery

4.5m @10.5 g/t Au

500 m from Lamefoot Mine

~1M oz at 8-10 g/t gold

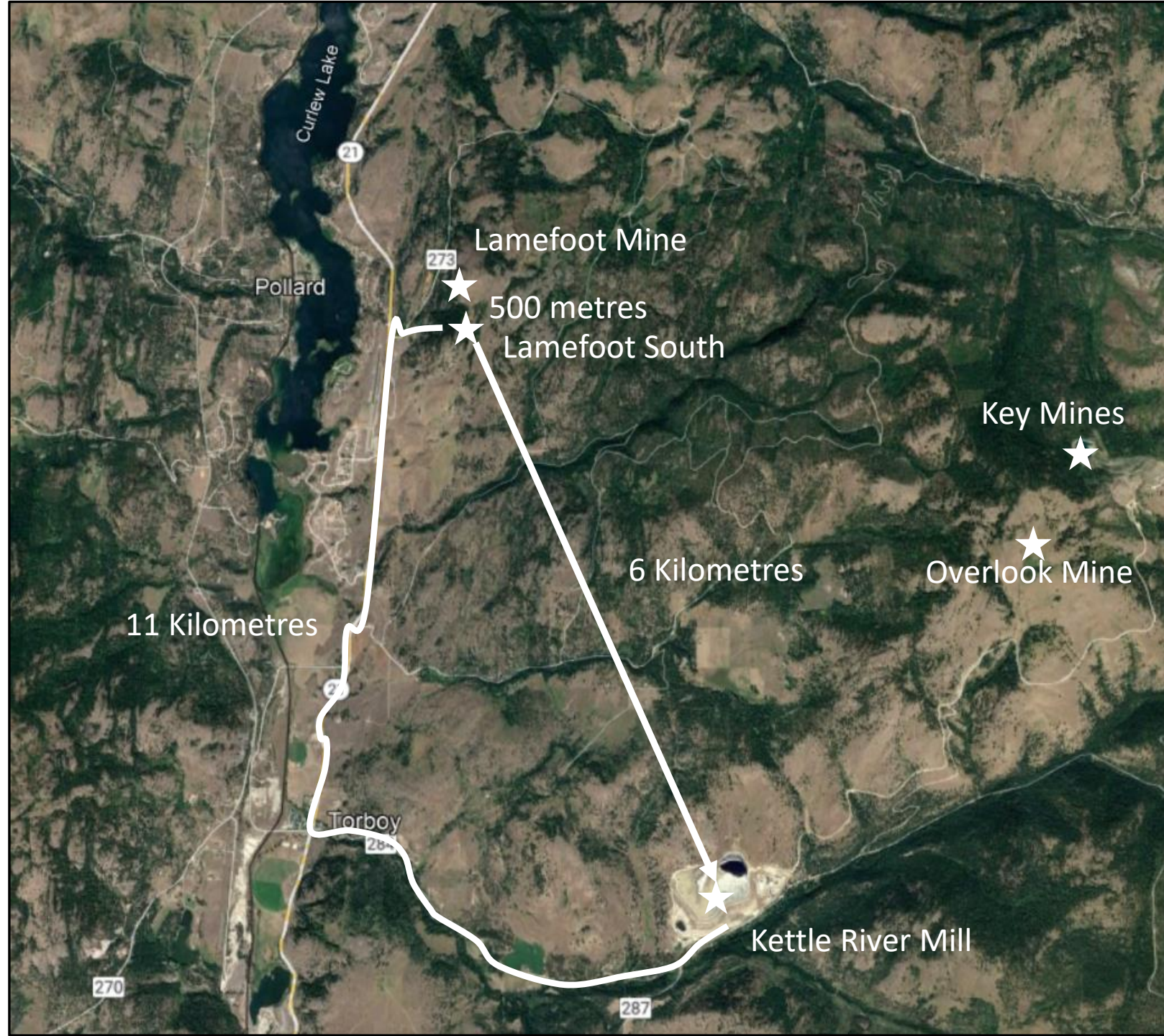


INFRASTRUCTURE LAMEFOOT SOUTH

Along Highway 21

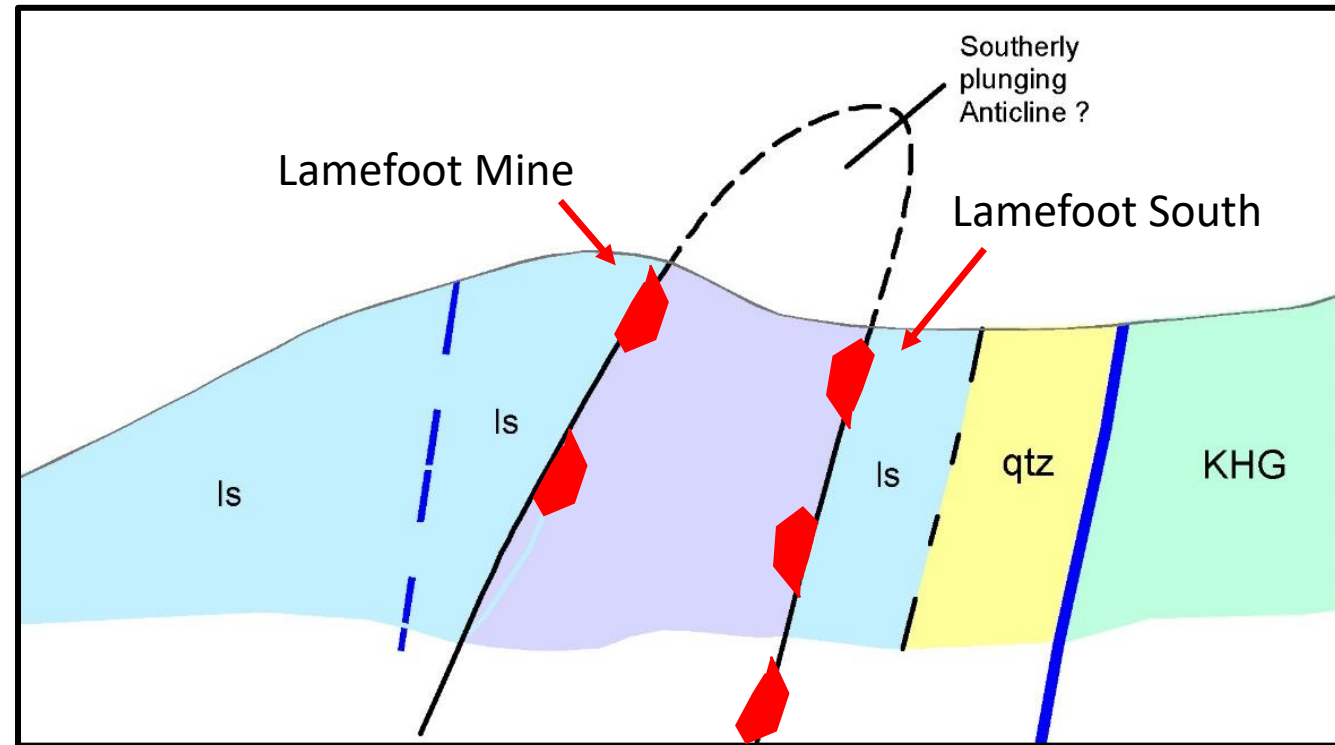
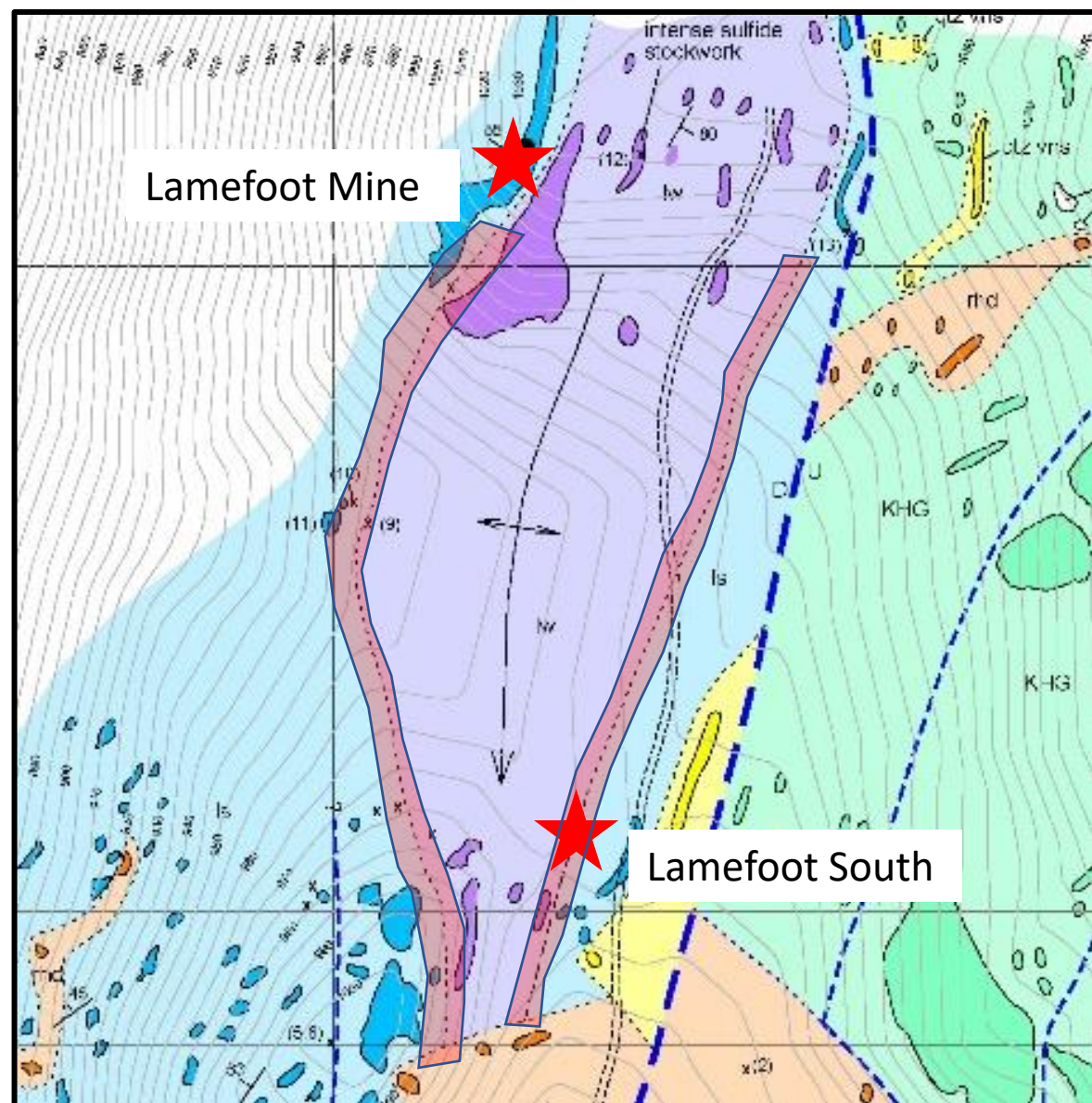
6km from the Kettle River Mill

11 km by existing roads



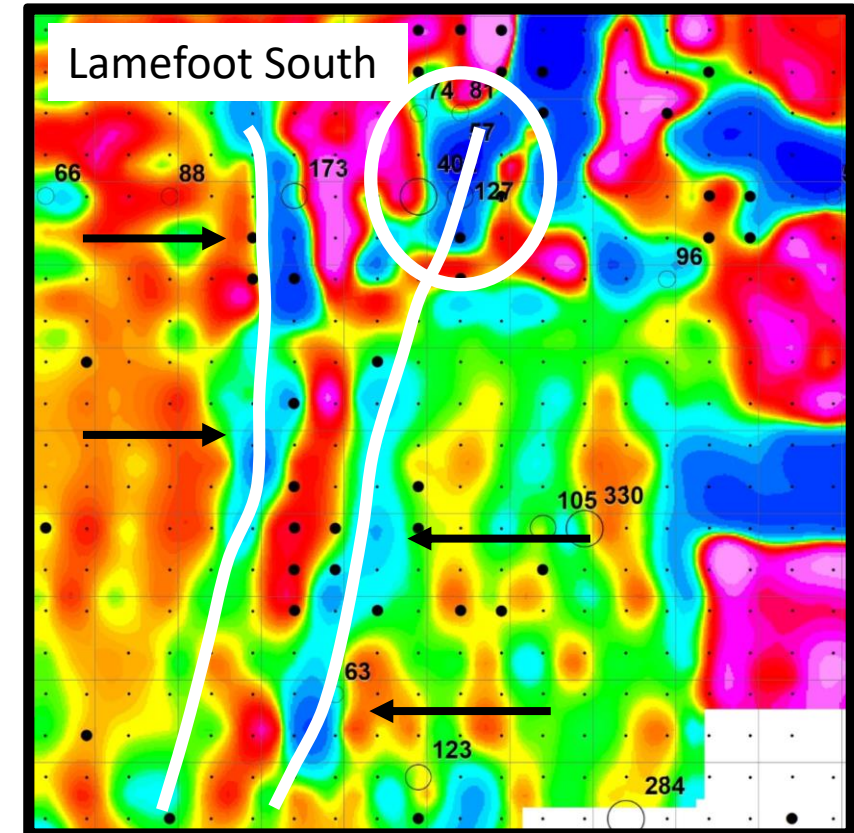
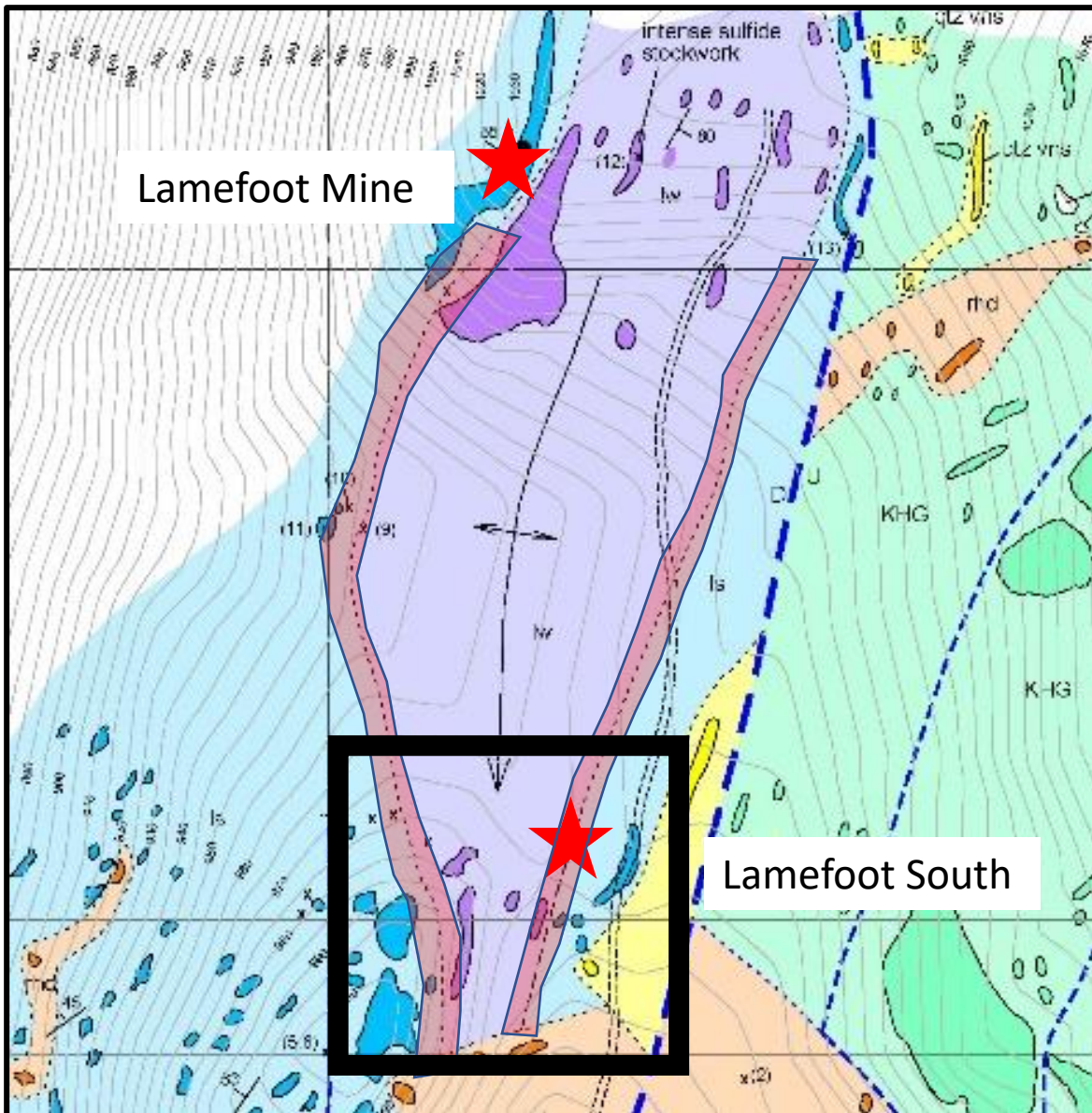
GEOLOGICAL ADVANTAGE

LAMEFOOT SOUTH



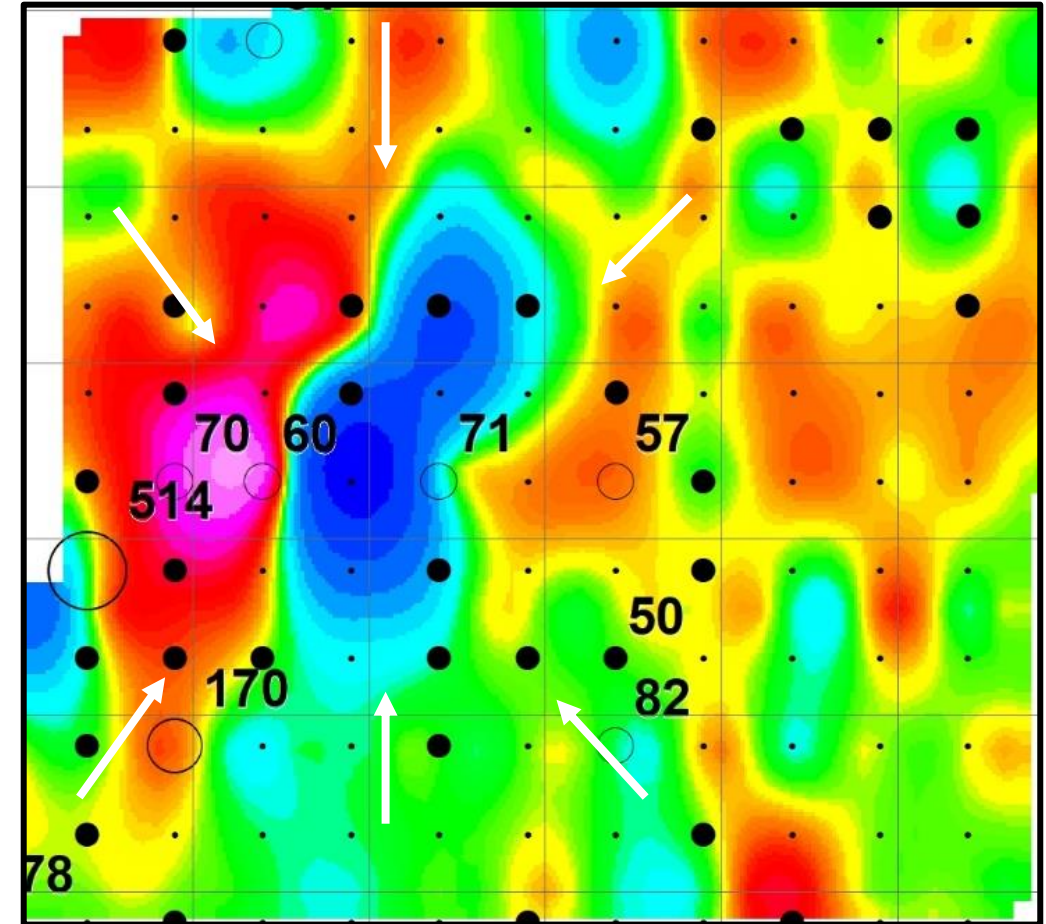
X-SECTION

GEOLOGICAL ADVANTAGE LAMEFOOT SOUTH



LAMEFOOT SOUTH NUMEROUS TARGETS SIZE POTENTIAL

- New Discovery of High-Grade Gold
- Determine Orientation of Mineralization
- Well Defined Target Specs
 - SP, Sulfides, Trace Elements
- Numerous Similar Nearby Targets to Test



ADAMERA HIGHLIGHTS 2023

- High- Grade Gold Results On Both Projects
- Follow Up Drilling Lamefoot South
- Follow Up Drilling Buckhorn 2.0
- Assays Pending For Both Projects
- Numerous Targets To Be Tested



THE MANAGEMENT AND ADVISORS TEAM HAS SUCCESSFULLY TAKEN COMPANIES FROM PROJECT GENERATION TO PRODUCTION AND /OR ACQUISITION.

MANAGEMENT

Chairman of the Board
Yale Simpson

President and CEO
Mark Kolebaba

Chief Financial Officer
Mark T. Brown

DIRECTORS

Mark Jones
Christopher Harold
Bernard Kahlert
Alejandro Adams

ADVISORS

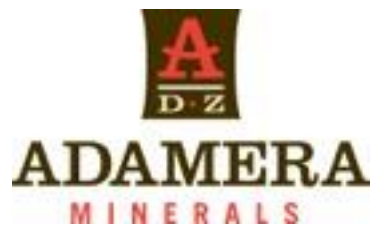
Peter Cooper
Graeme Currie
Cecil Bond

TSX-V	ADZ
Price	\$0.05
Shares Outstanding	222,772,928
Warrants	32,011,332
Options	15,040,000
Fully Diluted	269,824,260

Share Structure – March 2023

HEAD OFFICE

ADAMERA MINERALS CORP.
11TH FLOOR - 1111 MELVILLE ST.
VANCOUVER, BC
CANADA, V6E 3V6



LINKEDIN : [@ADAMERAMINERALS](#)

TWITTER: [ADZ_ADAMERA](#)

FACEBOOK: [Adamera Minerals](#)

Thank You

TSX-V: ADZ
OTC: DDNFF

EMAIL: INFO@ADAMERA.COM

PHONE: +1.604.689.2010

FAX: +1.604.484.7143

Forward Looking Statement

Information in this presentation may be forward looking. Forward looking information is subject to known and unknown risks, uncertainties and other factors, including potentially inaccurate assumptions, which may cause the actual results, performance or achievements to be materially different from the future results, performance or achievements expected or implied by the forward looking information which speaks only as of the date of this presentation. No invitation to purchase securities is being made. Project QP's are listed in the news release on the company's website. For more detailed information about the Company, please see our Annual Information form, Financial Statements, and other materials available from www.sedar.com.