

ADAMERA MINERALS

POSITIONED FOR DISCOVERY

TSX-V: ADZ OTC: DDNFF

Forward Looking Statement

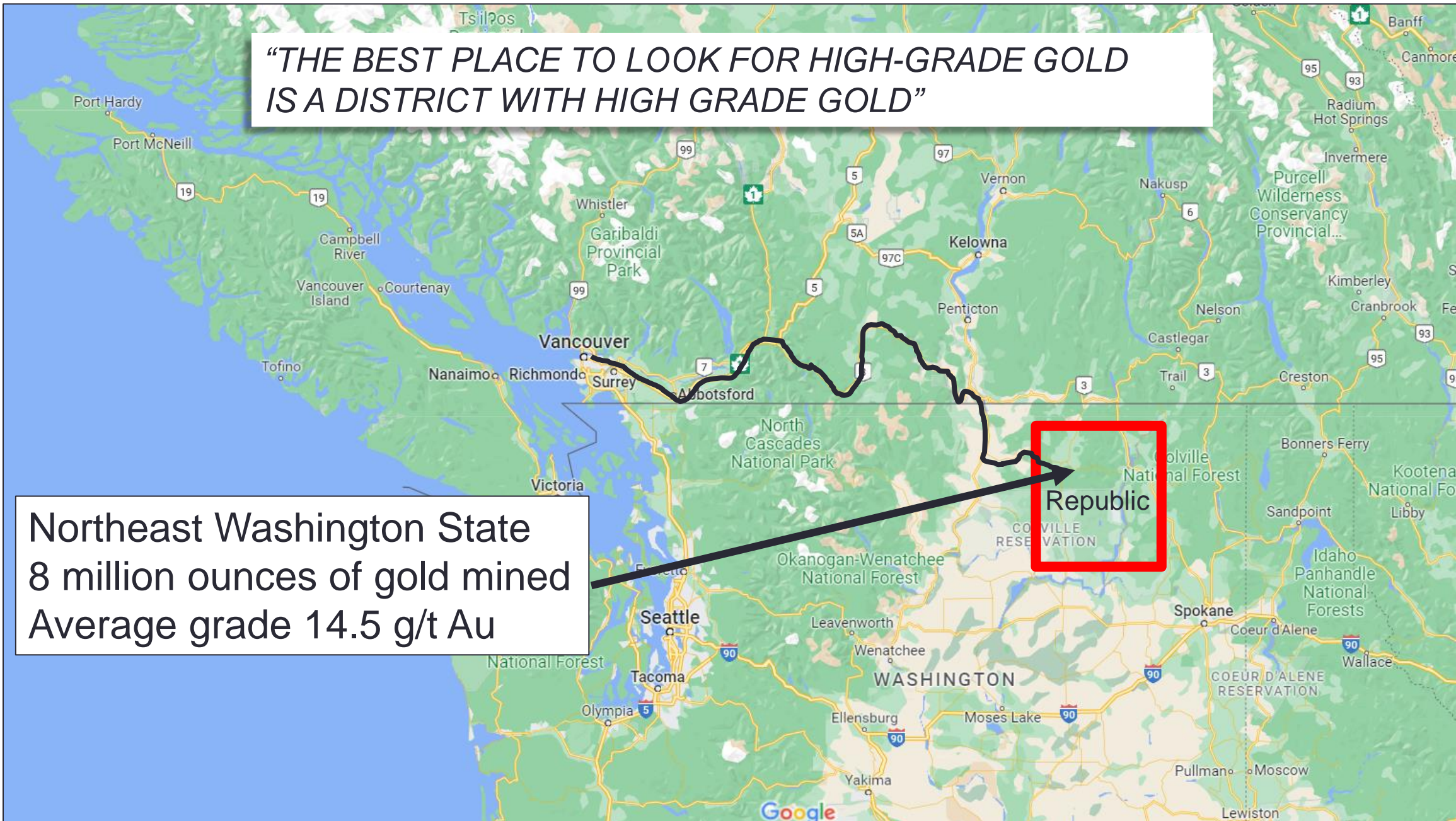
Information in this presentation may be forward looking. Forward looking information is subject to known and unknown risks, uncertainties and other factors, including potentially inaccurate assumptions, which may cause the actual results, performance or achievements to be materially different from the future results, performance or achievements expected or implied by the forward looking information which speaks only as of the date of this presentation. No invitation to purchase securities is being made. Project QP's are listed in the news release on the company's website. For more detailed information about the Company, please see our Annual Information form, Financial Statements, and other materials available from www.sedar.com

View from Buckhorn 2.0 project to the Buckhorn Mine

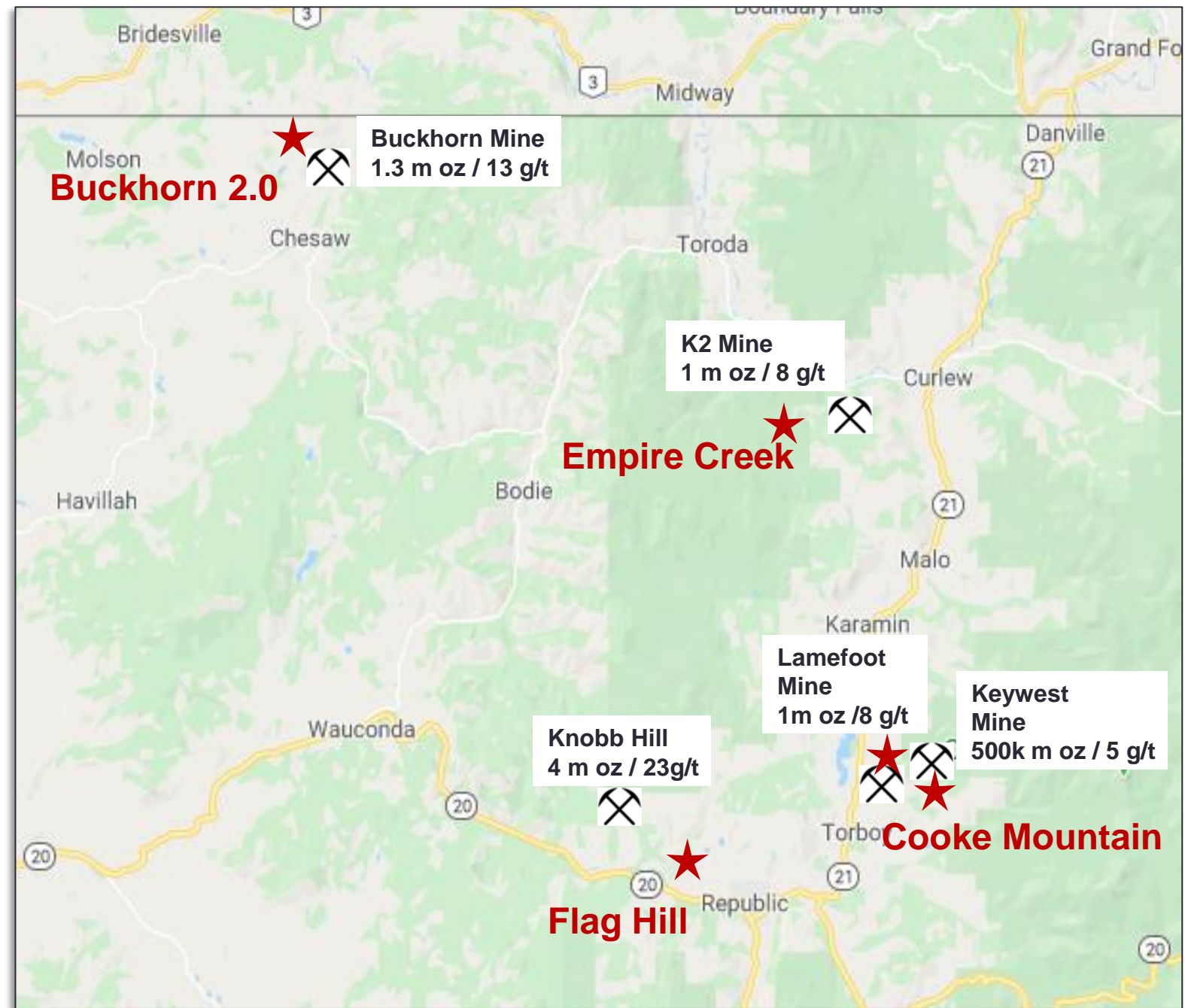


“THE BEST PLACE TO LOOK FOR HIGH-GRADE GOLD IS A DISTRICT WITH HIGH GRADE GOLD”

Northeast Washington State
8 million ounces of gold mined
Average grade 14.5 g/t Au



- EXPOSURE TO GOLD AND BASE METALS SURROUNDING PAST PRODUCING HIGH-GRADE MINES
- EXISTING INFRASTRUCTURE
- 5 PROJECTS 100% OWNED-DEVELOPED TARGETS
- OVER 8 MILLION OZS OF HIGH GRADE
- ALL ADAMERA PROJECTS ARE NEXT TO PAST PRODUCING MINES



- 2000 T/D MILL OWNED BY KINROSS
- MILL CURRENTLY ON CARE AND MAINTENANCE
- LOCATED 5-12 KM FROM ADAMERA COOKE MOUNTAIN PROJECT
- REPORTED PRODUCTION COST – \$320 TO \$680 PER OUNCE



View of tailings pond from Adamera's Oversight project



Kettle River Mill



Kettle River Mill produced ~3M ozs Au from deposits shown on obelisk. Adamera projects surround these deposits.

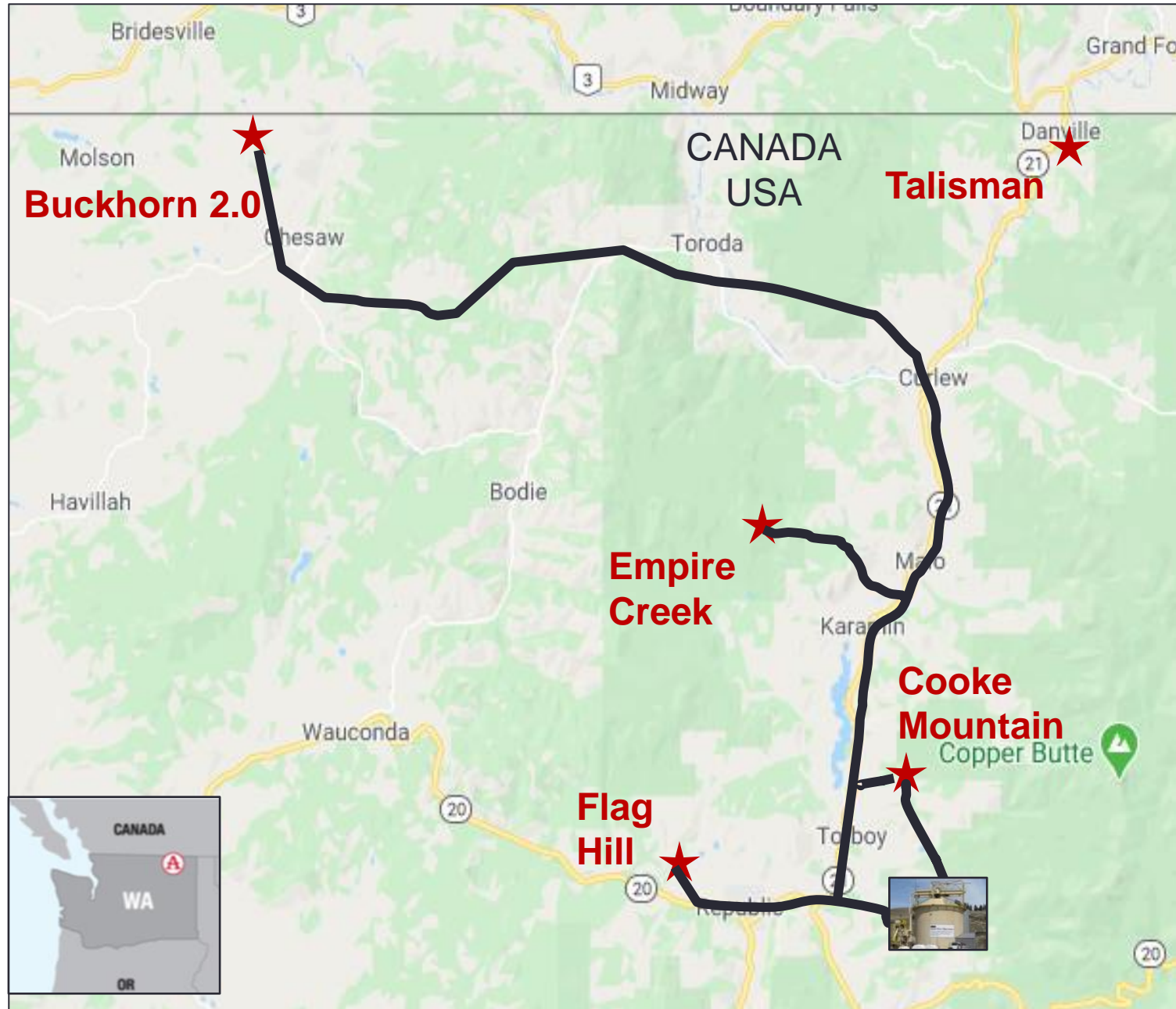
DISTANCE FROM MILL BY ROAD

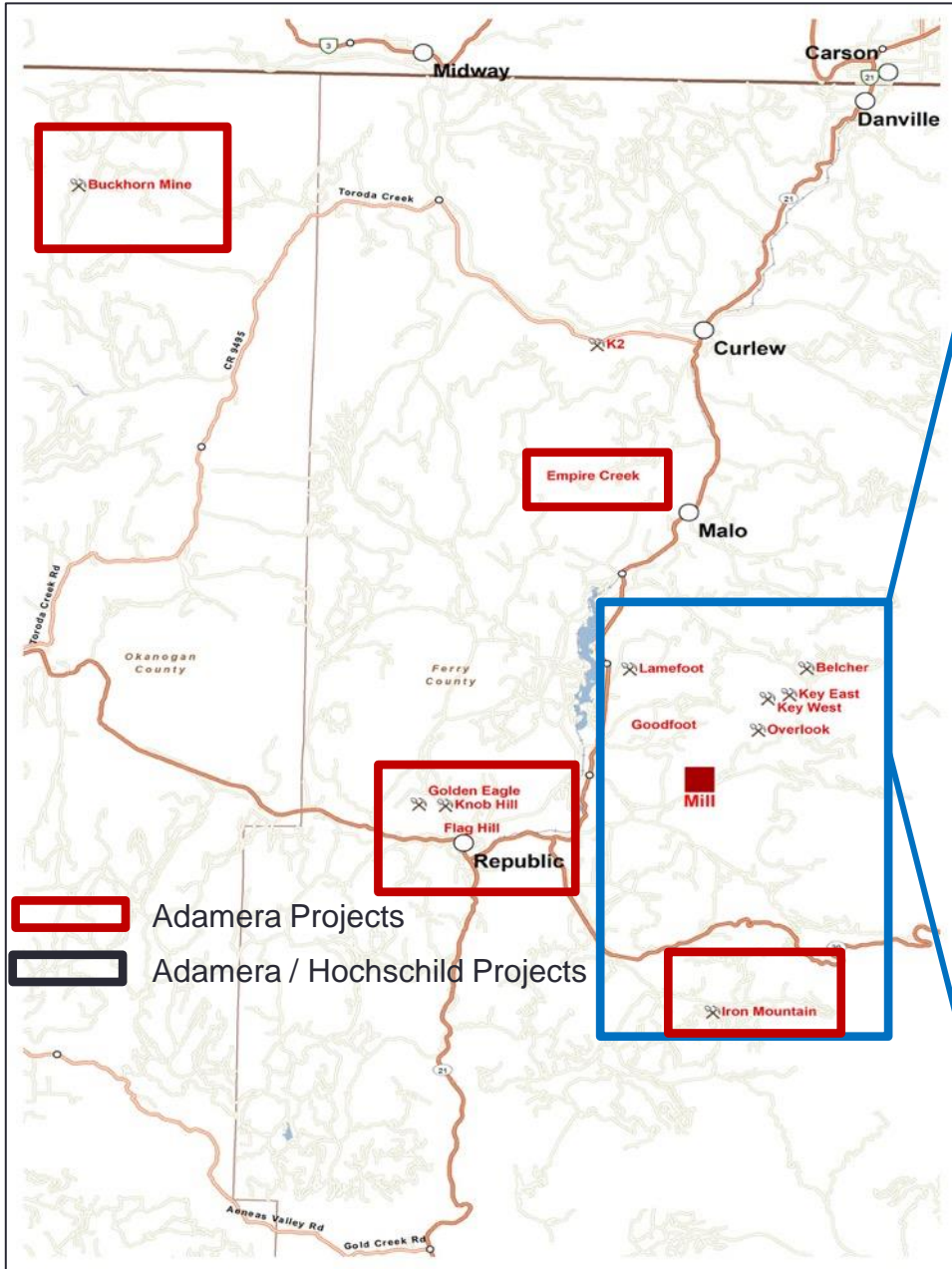
BUCKHORN 2.0 - 80 KM

COOKE MOUNTAIN – 5 KM

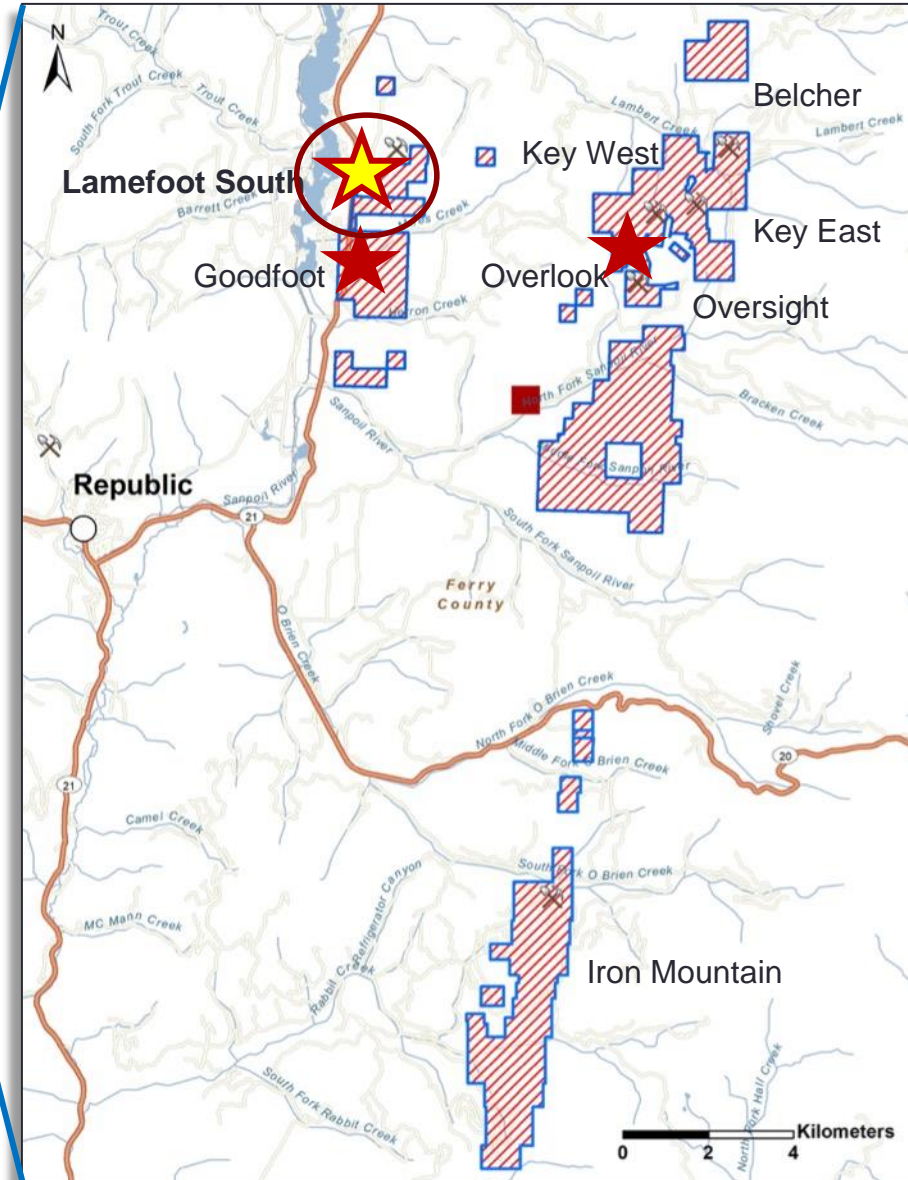
FLAG HILL – 12 KM

EMPIRE CREEK – 35 KM





Cooke Mountain



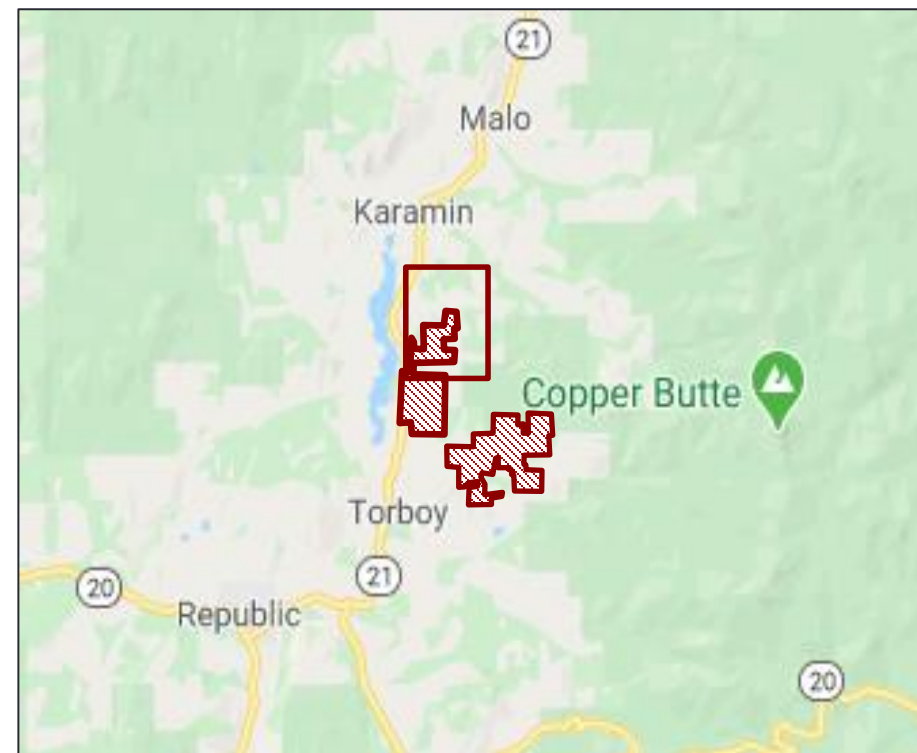
- 3000 METRE DRILL PROGRAM
- 2021 - 8 DRILL HOLES TESTED HIGH PRIORITY TARGETS ON OVERSIGHT, GOODFOOT AND LAMEFOOT
- 2022 - 2 HOLES TO FOLLOW UP ON HOLE PL-6 ON LAMEFOOT SOUTH RETURNED HIGH-GRADE GOLD



2021 DRILL HOLE PL- 6

- 4.7 G/T AU OVER 2.7 M
INCLUDING
- 10.7 G/T AU OVER .76 M

WITHIN AN 11 METRE ZONE
CONTAINING ELEVATED GOLD



Selected core photos from gold rich zone between 24-27 metres

TWO HOLES DRILLED IN 2022 TO FOLLOW UP PL-6 HOLE RESULTED IN A NEW DISCOVERY

A DRILL WILL BE MOBILIZED TO CONTINUE DRILLING ON THE PROPERTY.



Hole	From (m)	To (m)	Interval	Au (g/t)
LS22-01	23.01	24.53	1.52	1.6
	27.43	28.65	1.22	0.51
LS22-02	29.6	34	4.42	10.51
	incl.	29.57	30.9	1.37
incl.	31.7	32.9	1.22	14.31
incl.	32.9	34	1.07	21.24



4.5 g/t

0.041 g/t

14.31 g/t

08/04/2022

32.3M

32.9



21.24 g/t

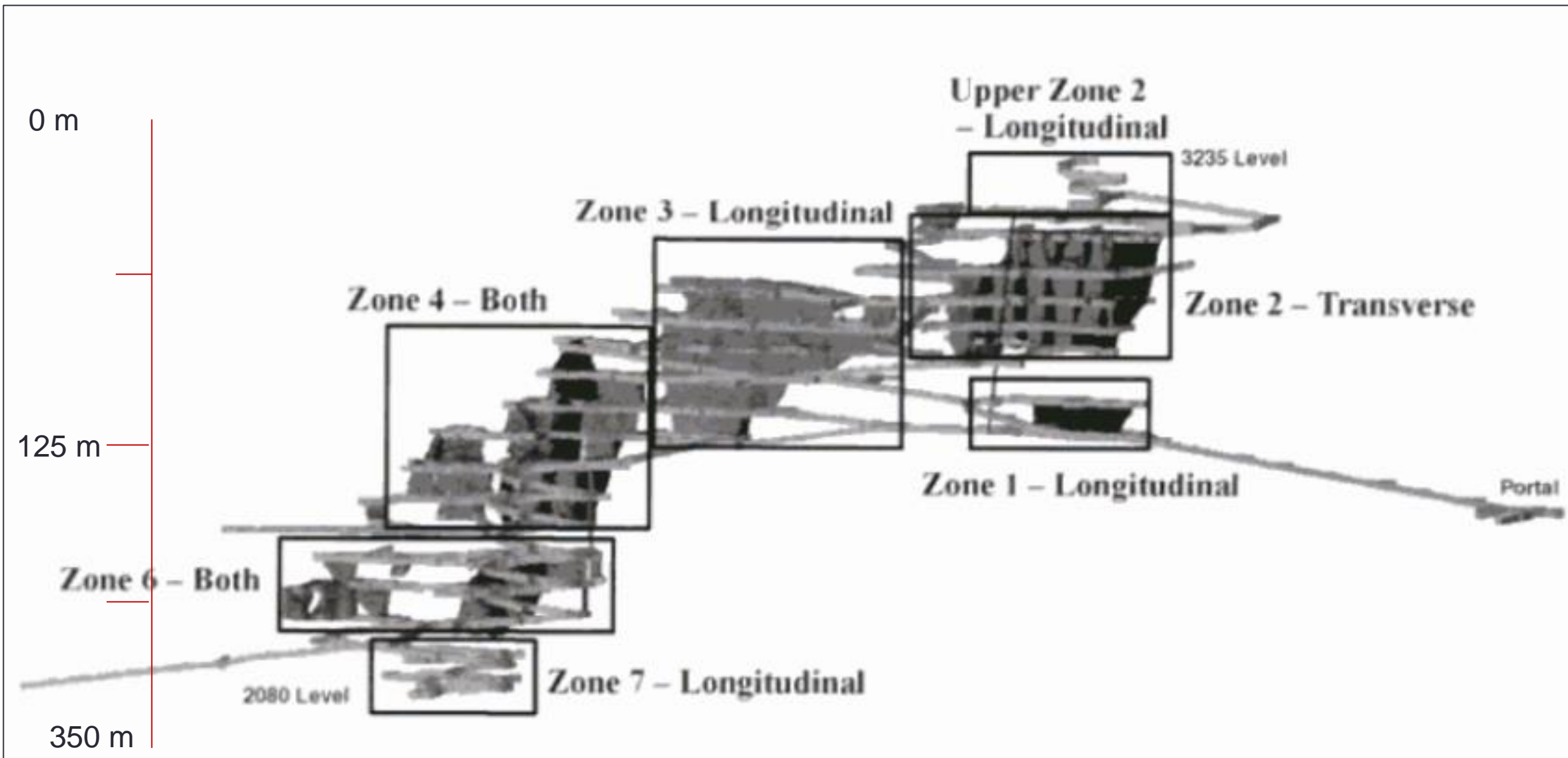
33.9

34.4

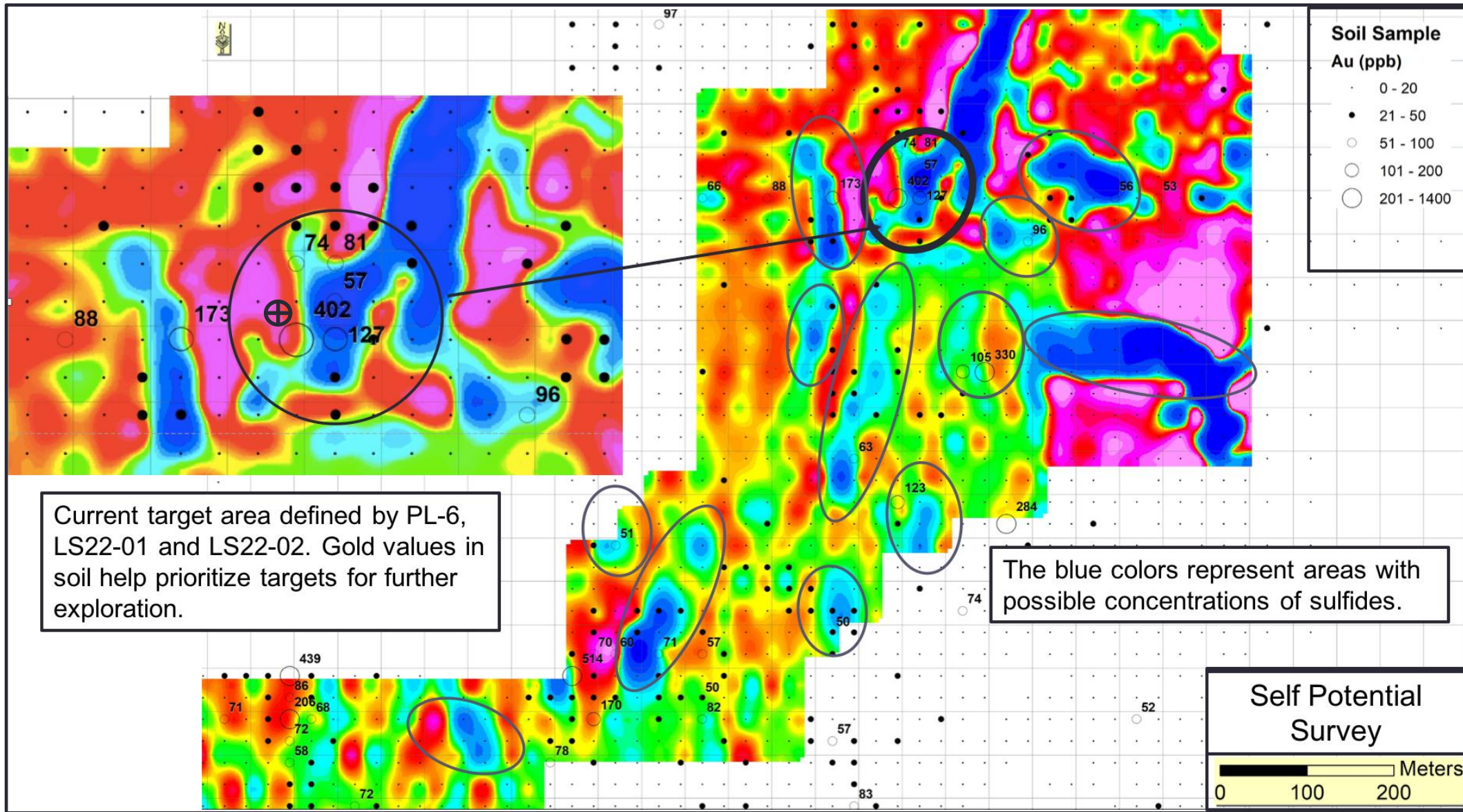
0.02 g/t

08/04/2022

HISTORIC LAMEFOOT MINE – LONG SECTION SHOWING ORE ZONES

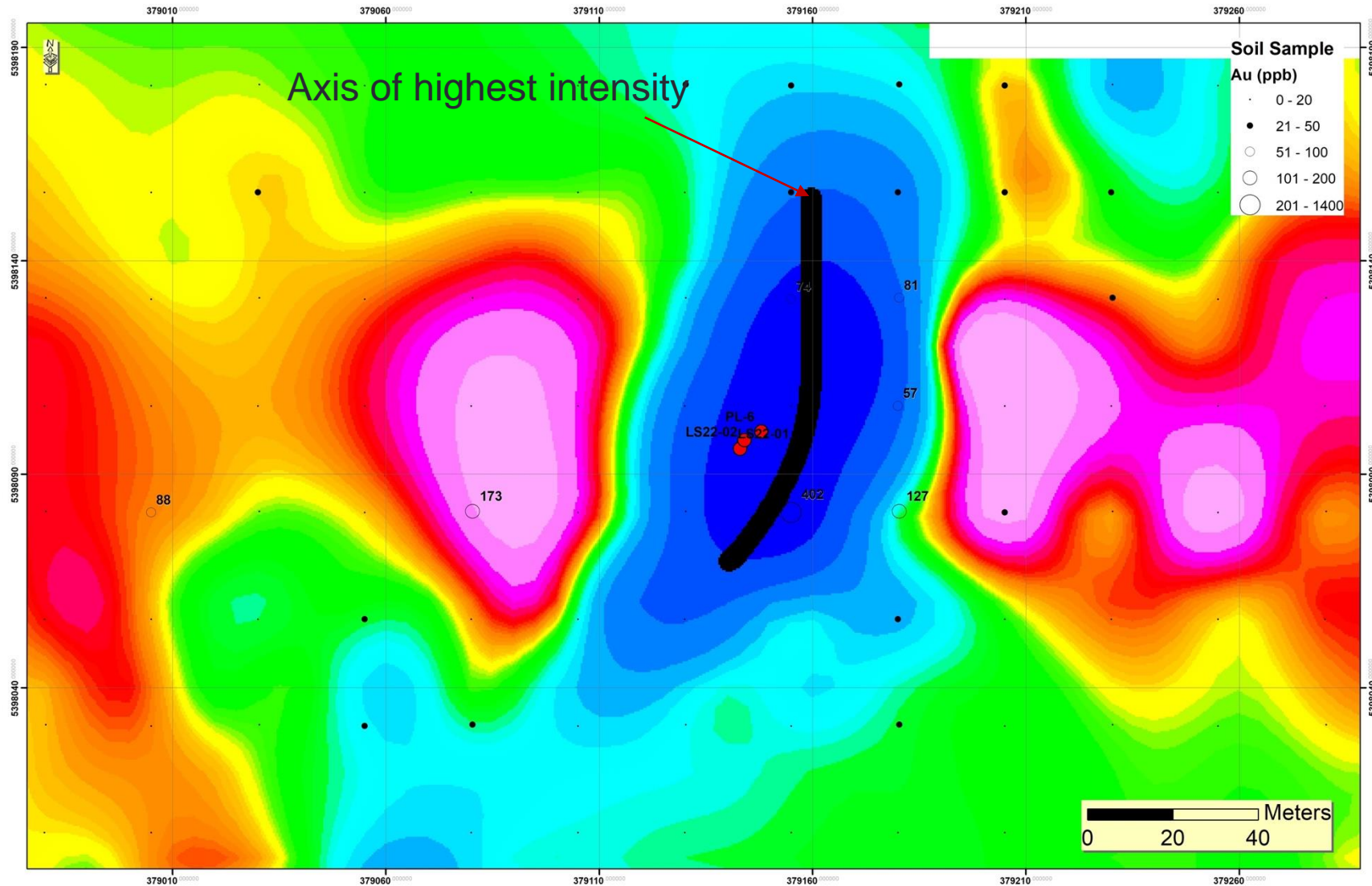


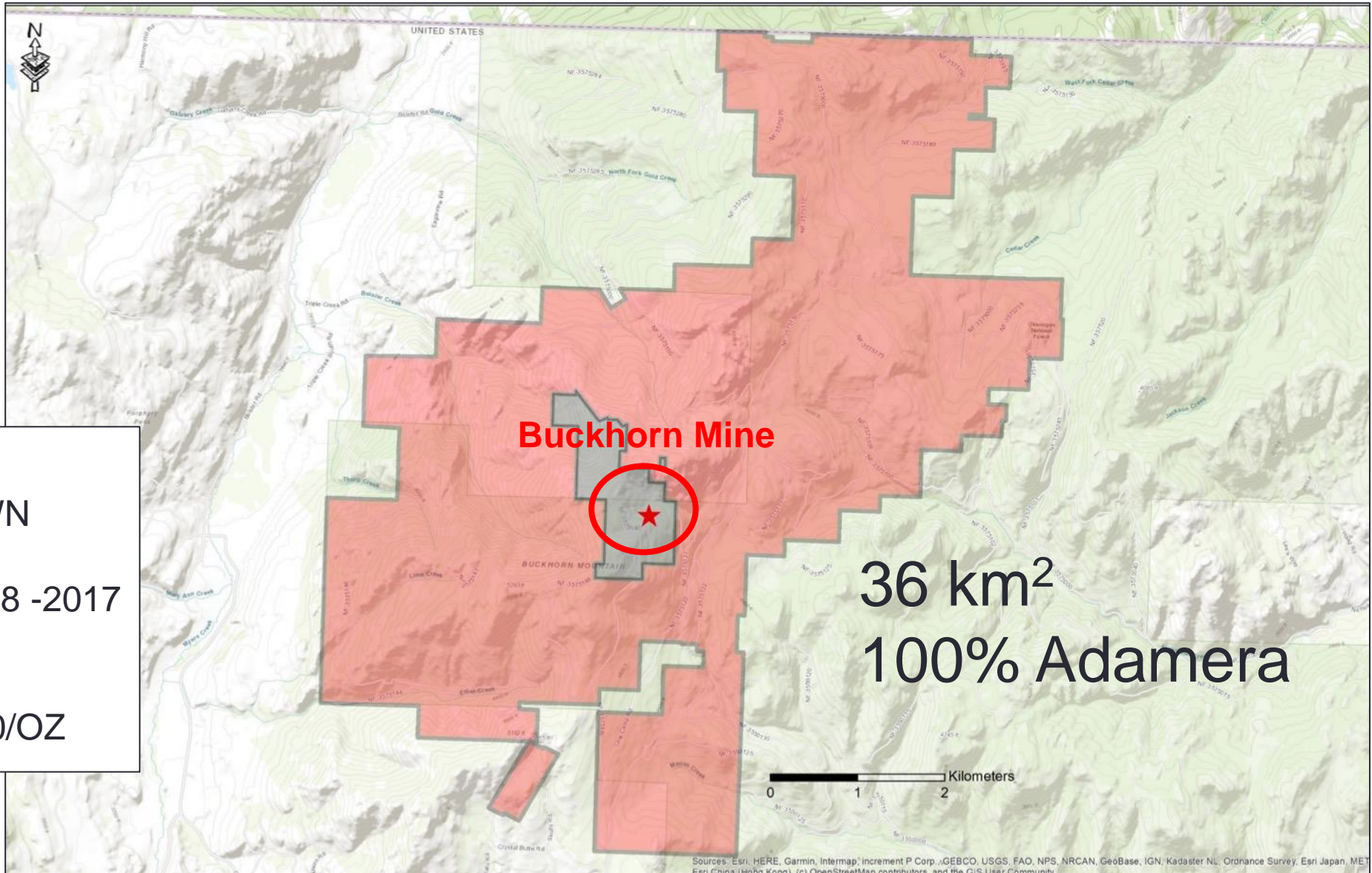
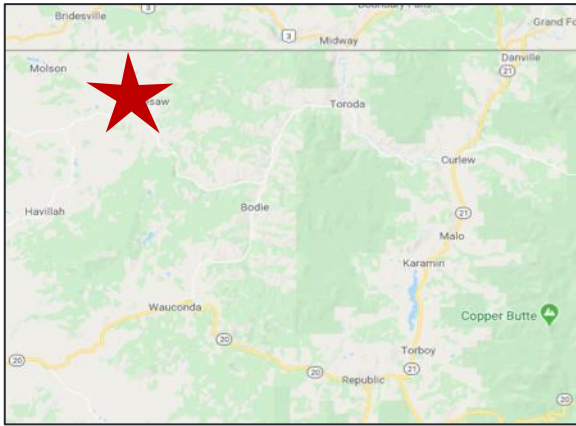
LONG SECTION SHOWS NUMEROUS PODS OR MINERALIZED ZONES MAKE UP THE MINE



MISE A LA MASSE SURVEYS CAN BE USED TO HELP MAP THE SUBSURFACE GEOMETRY OF A SULPHIDE ZONE BY APPLYING CURRENT DIRECTLY TO IT.

A SURVEY CONDUCTED ON HOLE LS22-02 APPEARS TO SHOWS A STEEPLY PLUNGING ZONE WITH POSSIBLE SULPHIDES.





BUCKHORN MINE

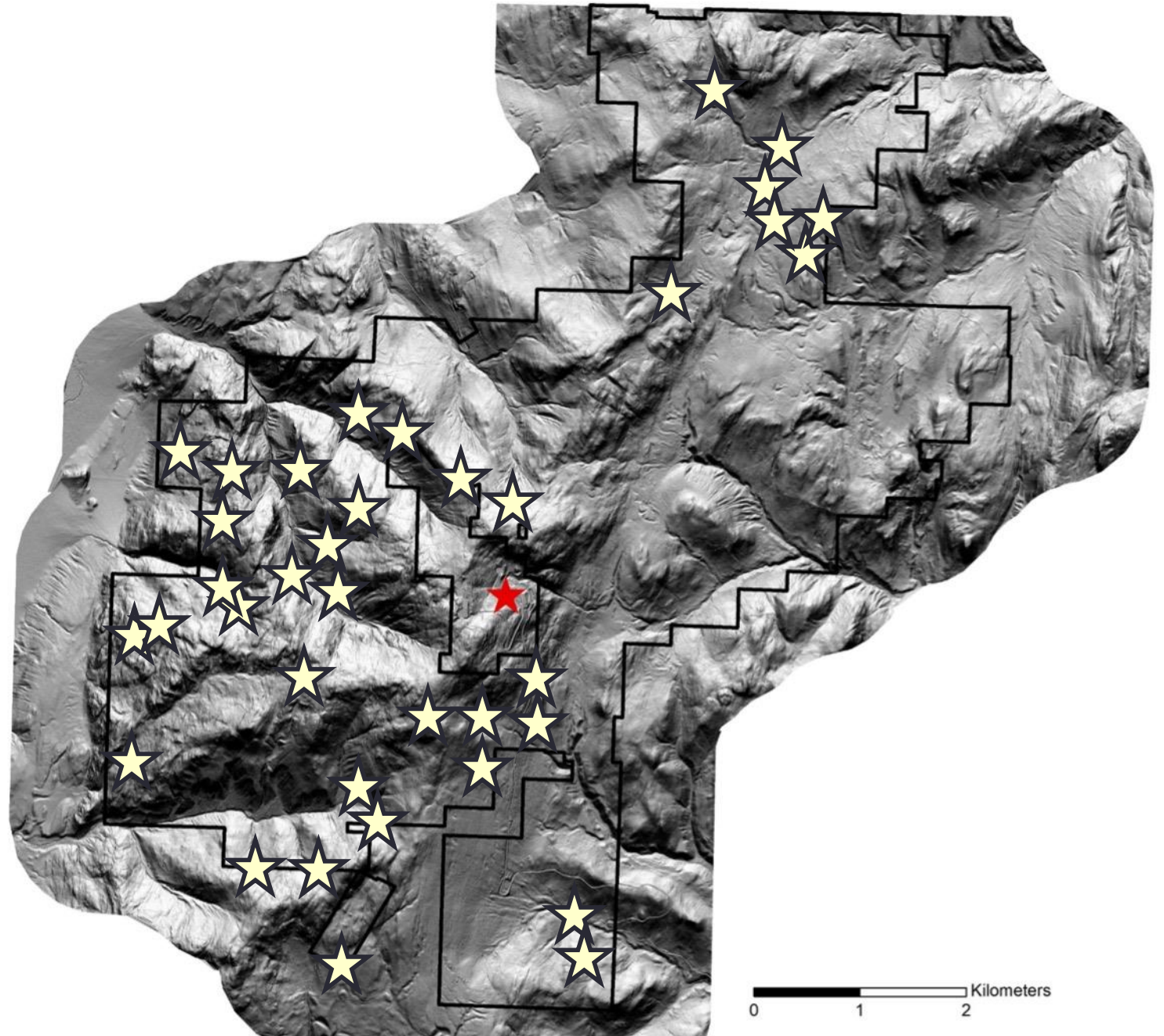
- DISCOVERED BY CROWN RESOURCES
- MINED BY KINROSS 2008 -2017
1.3 M OZ AU
~ GRADE 13 G/T AU
- MINING COST \$320-\$670/OZ

36 km²
100% Adamera

CURRENTLY DRILLING

Sources: Esri, HERE, Garmin, Intermap, increment P Corp., GEBCO, USGS, FAO, NPS, NRCAN, GeoBase, IGN, Kadaster NL, Ordnance Survey, Esri Japan, METI, Esri China (Hong Kong), (c) OpenStreetMap contributors, and the GIS User Community

**ADAMERA
NUMEROUS TARGETS
GENERATED!!**



BUCKHORN 2.0

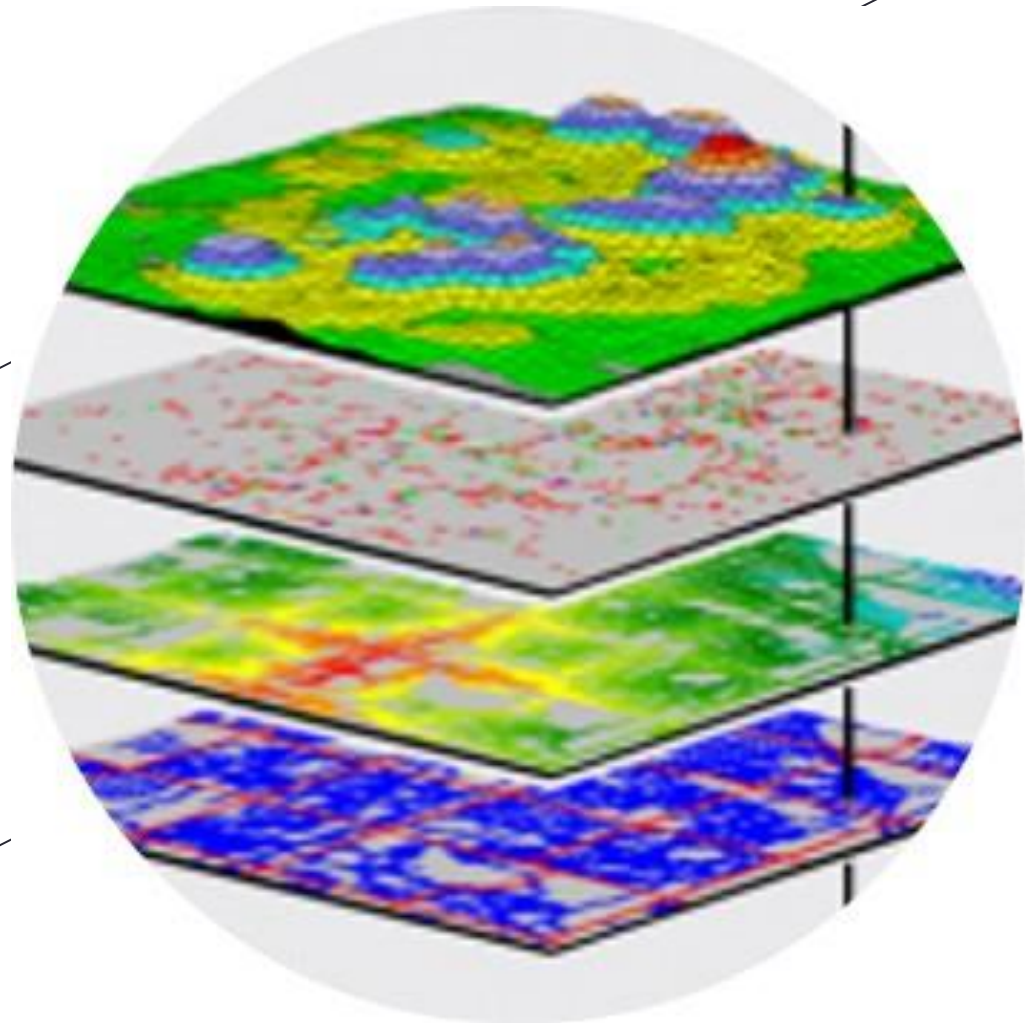
DATA ACQUISITION PACKAGE

ACQUIRED DATA LATE 2021

ADVANCES EXPLORATION BY 6 YEARS.

SAVES \$15,000,000 IN EXPLORATION COSTS

- ▶ Geochemical
- ▶ Geophysical
- ▶ Drilling
- ▶ Lidar



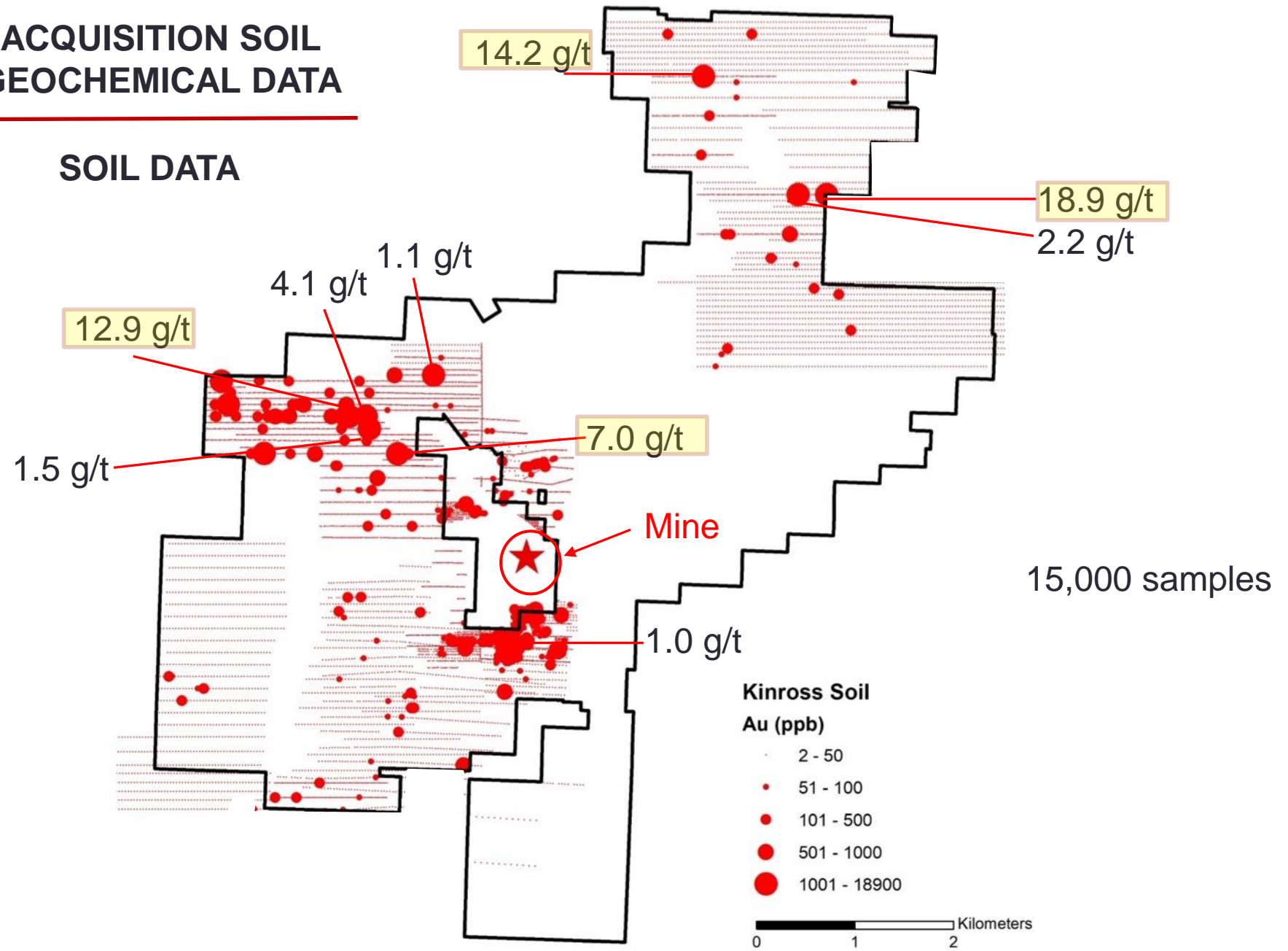
Targets



ACQUISITION SOIL GEOCHEMICAL DATA



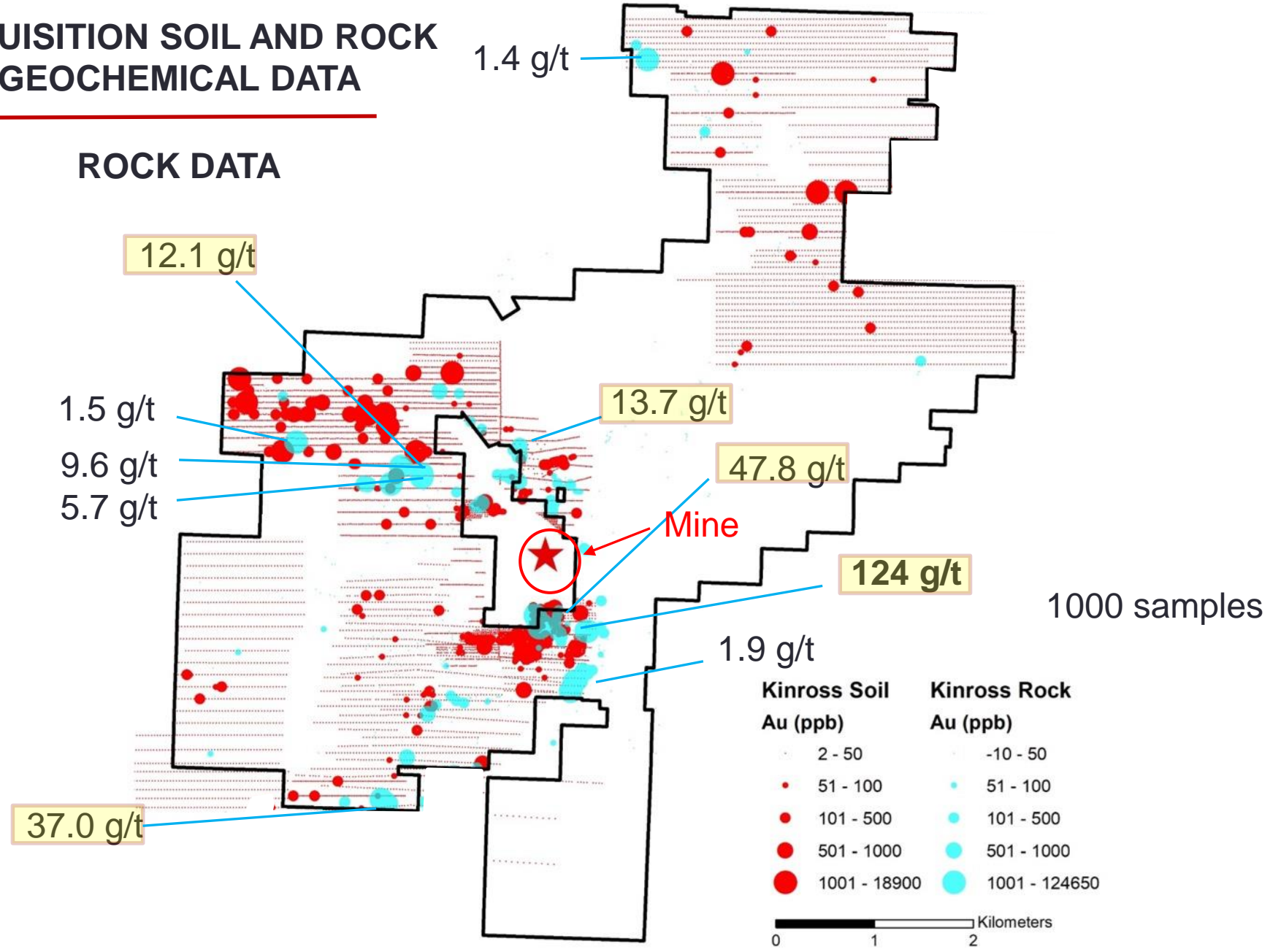
SOIL DATA





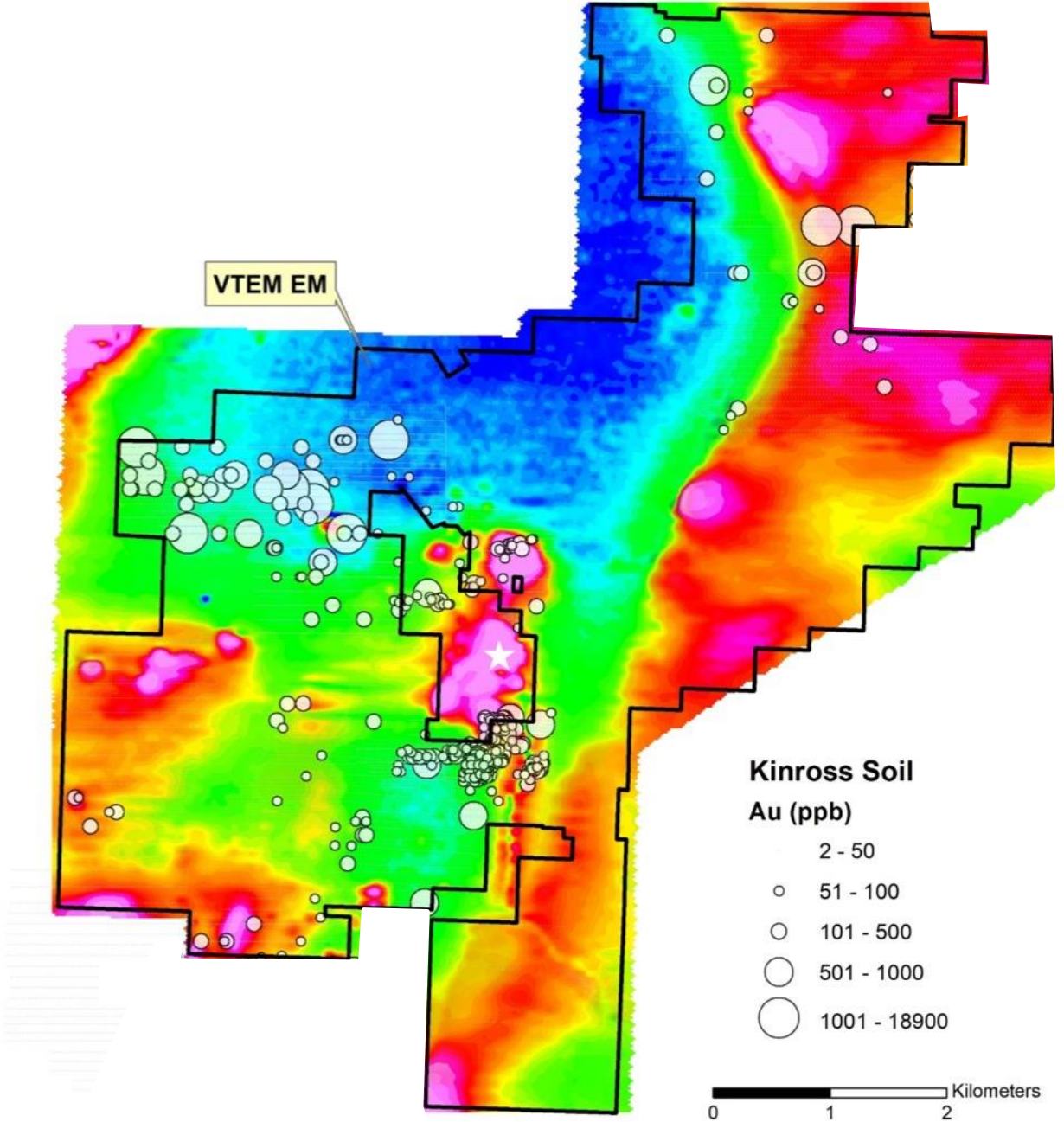
ACQUISITION SOIL AND ROCK GEOCHEMICAL DATA

ROCK DATA



ACQUISITION AIRBORNE ELECTROMAGNETICS

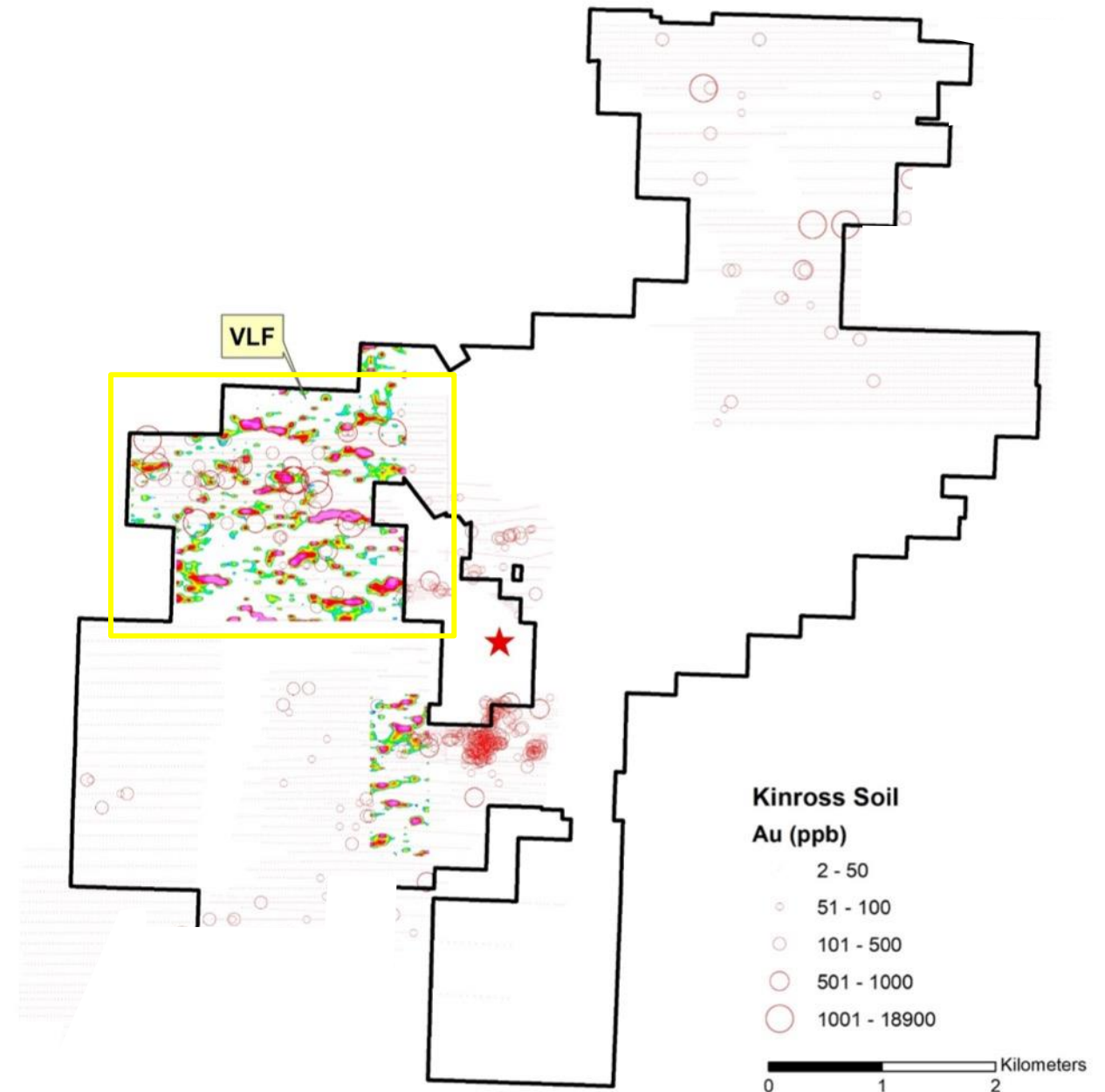
DRILLING DONE IN EARLY 1990s
AIRBORNE SURVEY FLOWN IN 2008!



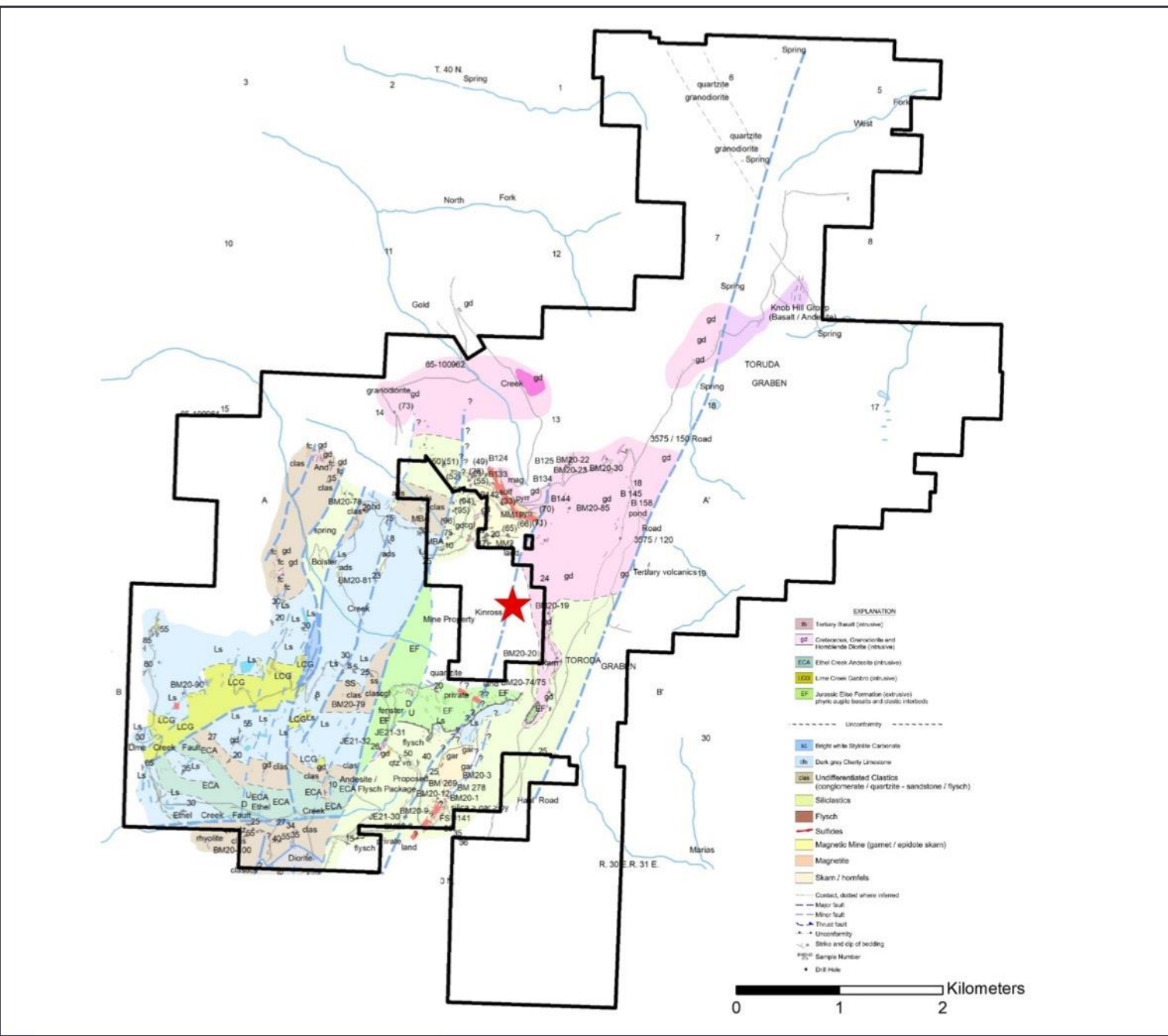
ADAMERA TEST VLF- EM SURVEY

IN 2021 ADAMERA COMPLETED A TEST SURVEY ON A SPECIFIC AREA OF THE PROJECT.

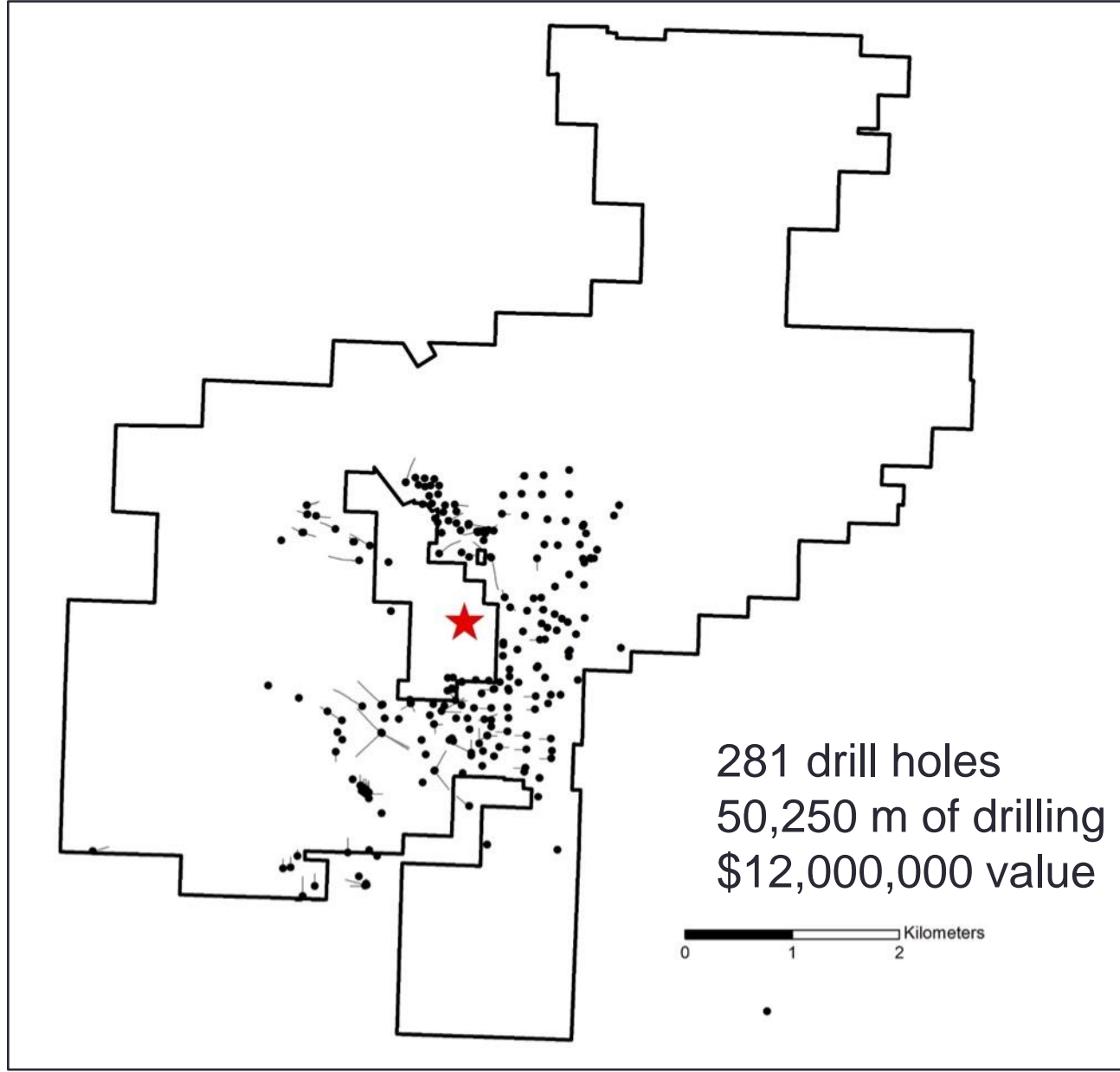
COMPLETION OF VLF SURVEY OVER THE PROJECT WILL TAKE PLACE IN 2022



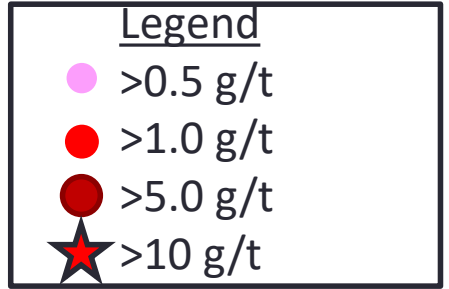
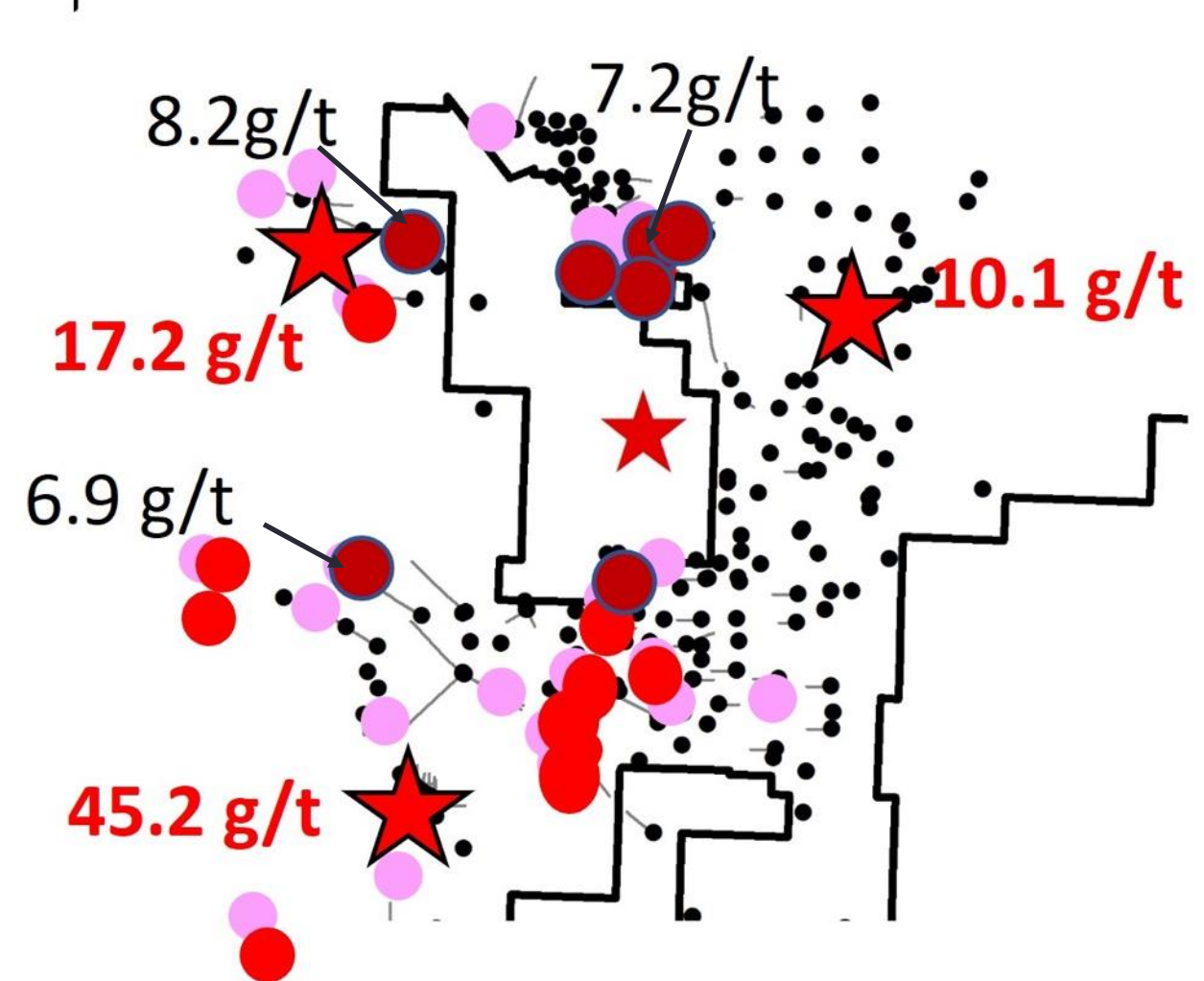
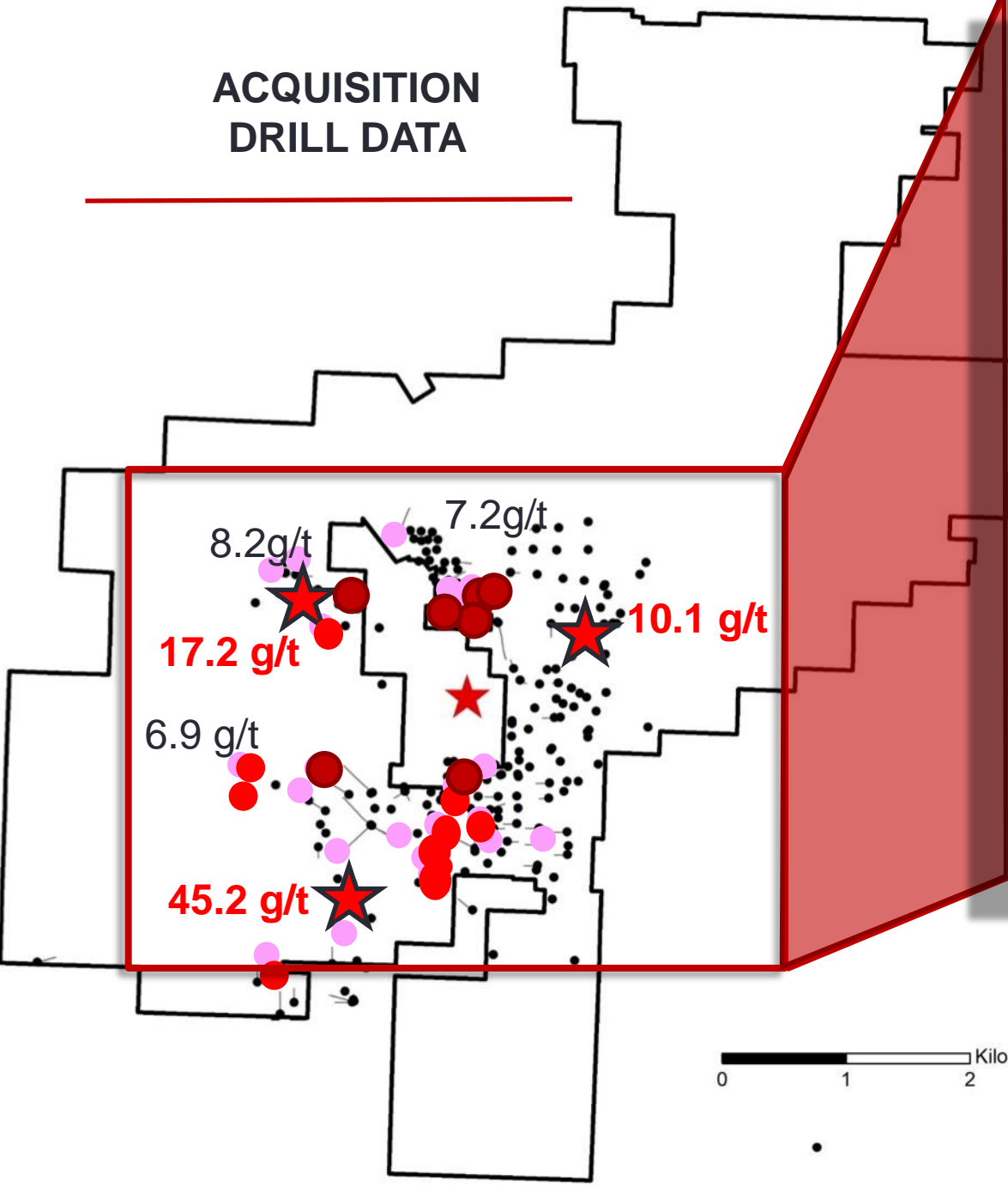
ADAMERA GEOLOGY MAP



ACQUISITION DRILL DATA



ACQUISITION DRILL DATA

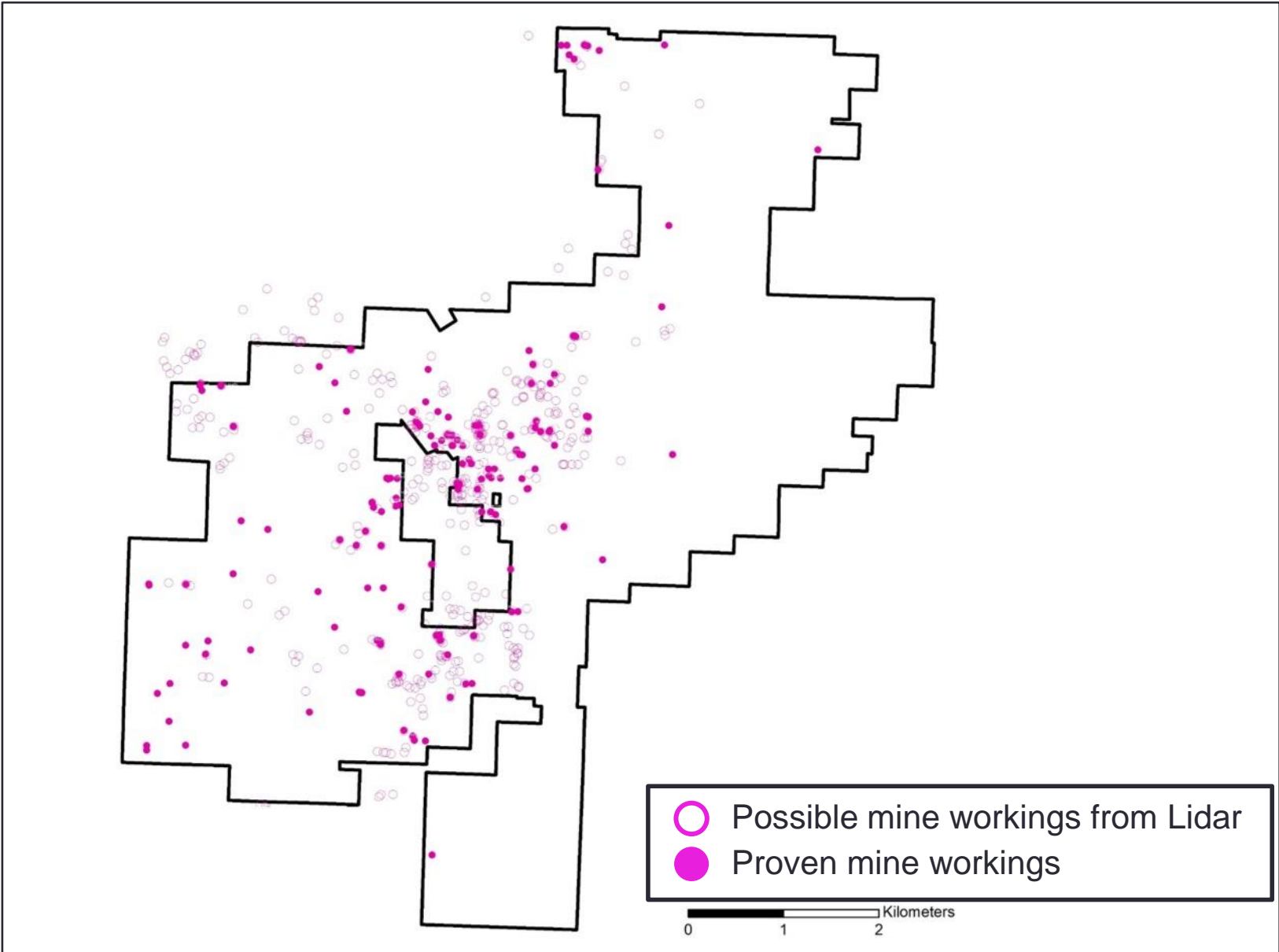
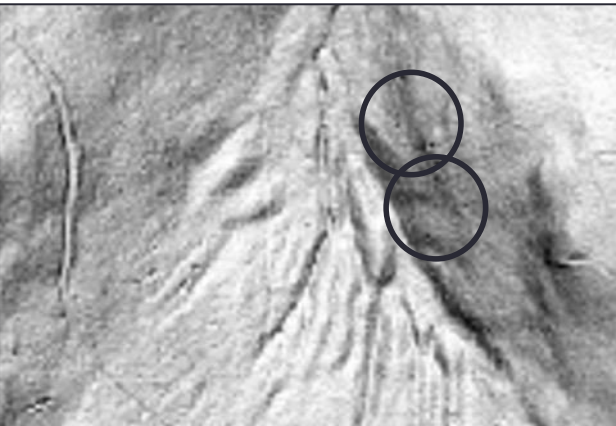


ADAMERA HISTORIC MINE WORKINGS

Mine workings



Lidar showing Mine workings



THE MANAGEMENT AND ADVISORS TEAM HAS SUCCESSFULLY TAKEN COMPANIES FROM PROJECT GENERATION TO PRODUCTION AND /OR ACQUISITION.

MANAGEMENT

Chairman of the Board
Yale Simpson

President and CEO
Mark Kolebaba

Chief Financial Officer
Mark T. Brown

DIRECTORS

Mark Jones
Christopher Harold
Bernard Kahlert
Alejandro Adams

ADVISORS

Peter Cooper
Graeme Currie
Cecil Bond

TSX-V	ADZ
Price	\$0.05
Shares Outstanding	222,647,928
Warrants	32,011,332
Options	11,675,000
Fully Diluted	266,334,260

Share Structure – Sept 2022

HEAD OFFICE

ADAMERA MINERALS CORP.
11TH FLOOR - 1111 MELVILLE ST.
VANCOUVER, BC
CANADA, V6E 3V6



Thank You!

LINKEDIN : [@ADAMERAMINERALS](#)

TWITTER: [ADZ_ADAMERA](#)

FACEBOOK: [Adamera Minerals](#)

EMAIL: INFO@ADAMERA.COM

PHONE: +1.604.689.2010

FAX: +1.604.484.7143

Forward Looking Statement

Information in this presentation may be forward looking. Forward looking information is subject to known and unknown risks, uncertainties and other factors, including potentially inaccurate assumptions, which may cause the actual results, performance or achievements to be materially different from the future results, performance or achievements expected or implied by the forward looking information which speaks only as of the date of this presentation. No invitation to purchase securities is being made. Project QP's are listed in the news release on the company's website. For more detailed information about the Company, please see our Annual Information form, Financial Statements, and other materials available from www.sedar.com.