

# ADAMERA MINERALS

POSITIONED FOR DISCOVERY

Q1 2022

TSX-V: ADZ OTC: DDNFF



## **Forward Looking Statement**

*Information in this presentation may be forward looking. Forward looking information is subject to known and unknown risks, uncertainties and other factors, including potentially inaccurate assumptions, which may cause the actual results, performance or achievements to be materially different from the future results, performance or achievements expected or implied by the forward looking information which speaks only as of the date of this presentation. No invitation to purchase securities is being made. Project QP's are listed in the news release on the company's website. For more detailed information about the Company, please see our Annual Information form, Financial Statements, and other materials available from [www.sedar.com](http://www.sedar.com)*

*View from Buckhorn 2.0 project to the Buckhorn Mine*



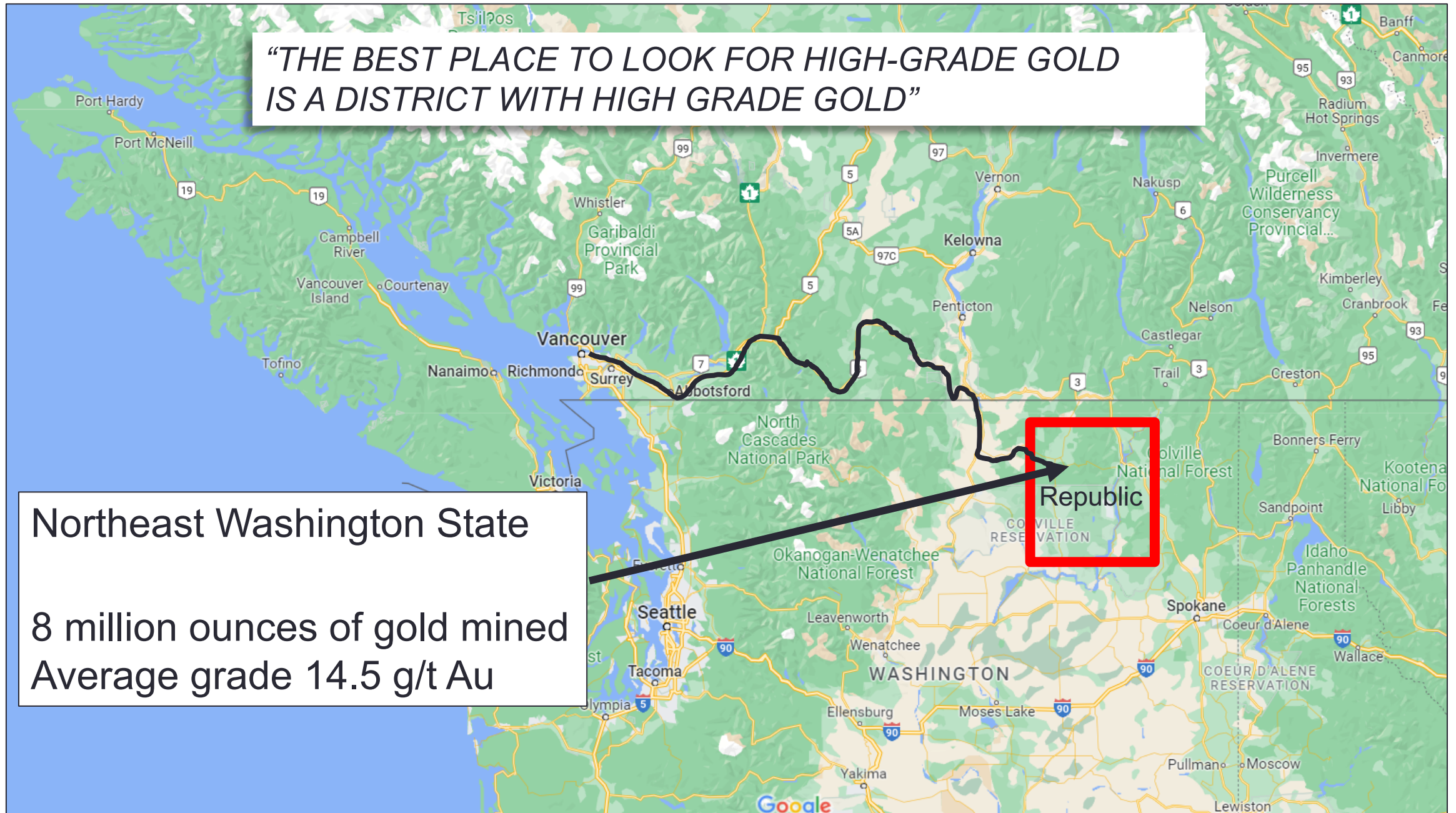


*"THE BEST PLACE TO LOOK FOR HIGH-GRADE GOLD  
IS A DISTRICT WITH HIGH GRADE GOLD"*

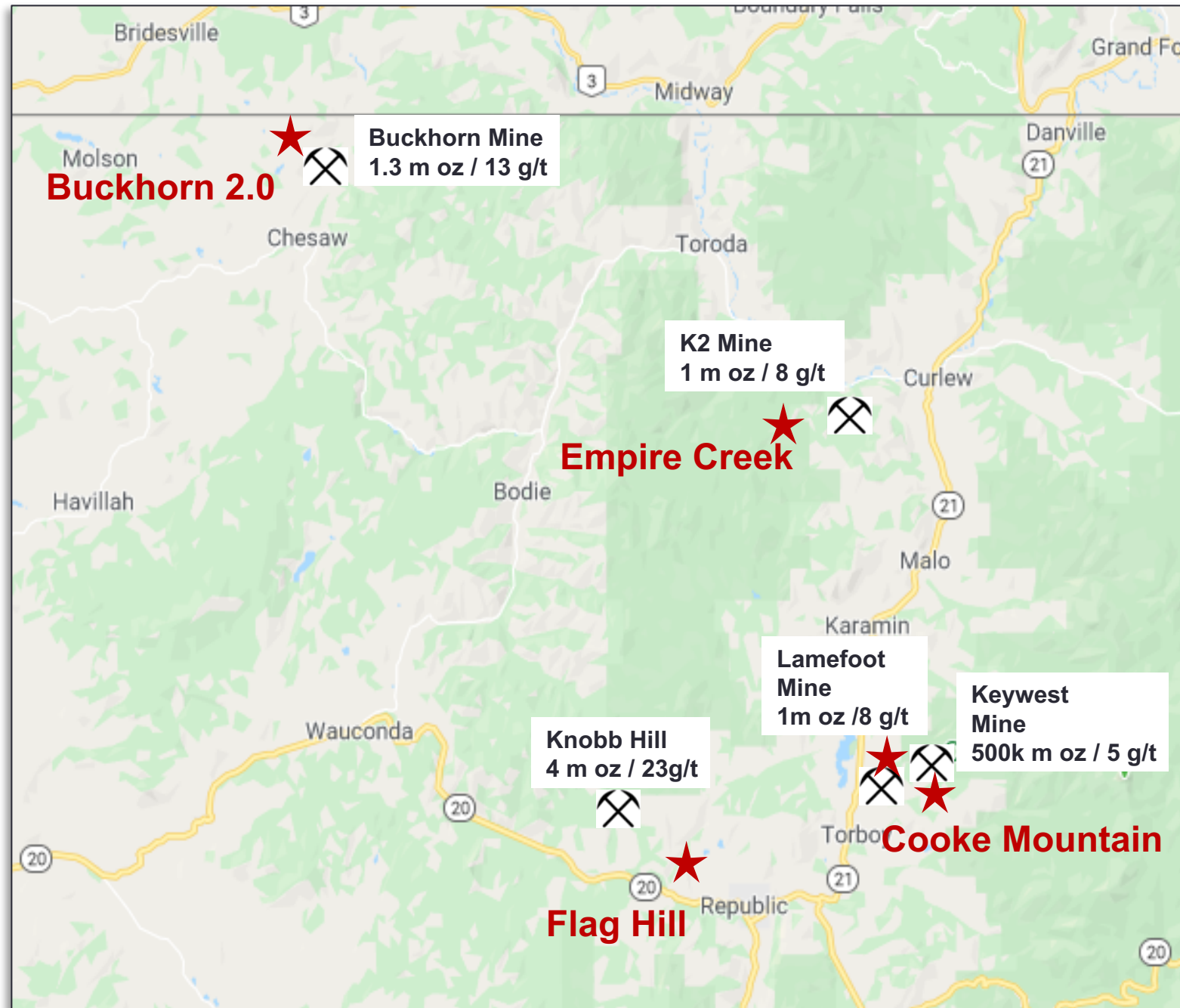
Northeast Washington State

8 million ounces of gold mined  
Average grade 14.5 g/t Au

Republic



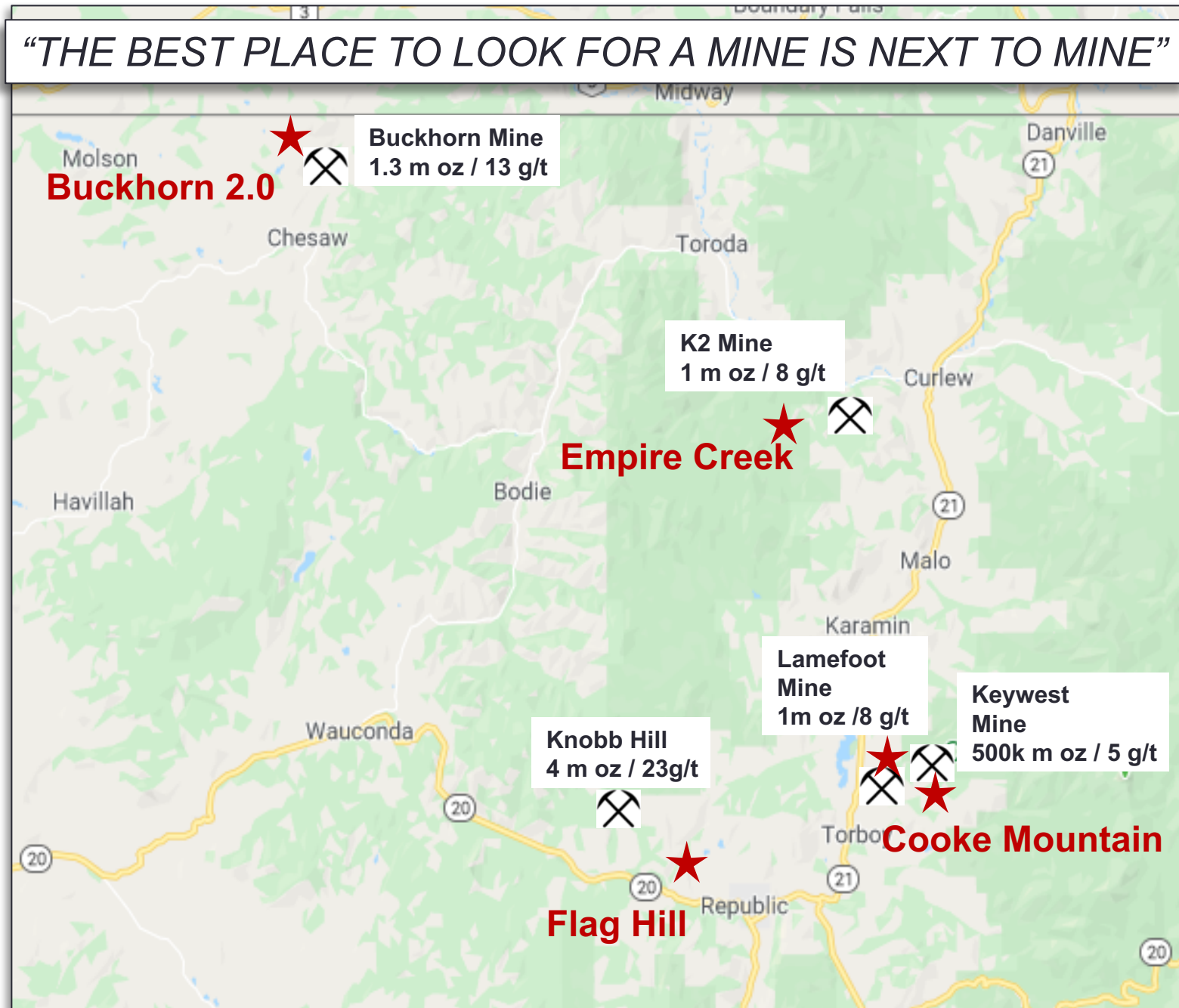
- EXPOSURE TO GOLD AND BASE METALS SURROUNDING PAST PRODUCING HIGH-GRADE MINES
- EXISTING INFRASTRUCTURE
- 5 PROJECTS 100% OWNED-DEVELOPED TARGETS
- FUNDING PARTNER ON THE COOKE MOUNTAIN PROJECT





*"THE BEST PLACE TO LOOK FOR A MINE IS NEXT TO MINE"*

- OVER 8 MILLION OZS OF HIGH GRADE GOLD PRODUCED IN THE AREA
- ALL ADAMERA PROJECTS ARE NEXT TO PAST PRODUCING MINES





- 2000 T/D MILL OWNED BY KINROSS
- MILL CURRENTLY ON CARE AND MAINTENANCE
- LOCATED 5-12 KM FROM ADAMERA COOKE MOUNTAIN PROJECT
- REPORTED PRODUCTION COST – \$320 TO \$680 PER OUNCE



View of tailings pond from Adamera's Oversight project



Kettle River Mill



Kettle River Mill produced ~3M ozs Au from deposits shown on obelisk. Adamera projects surround these deposits.



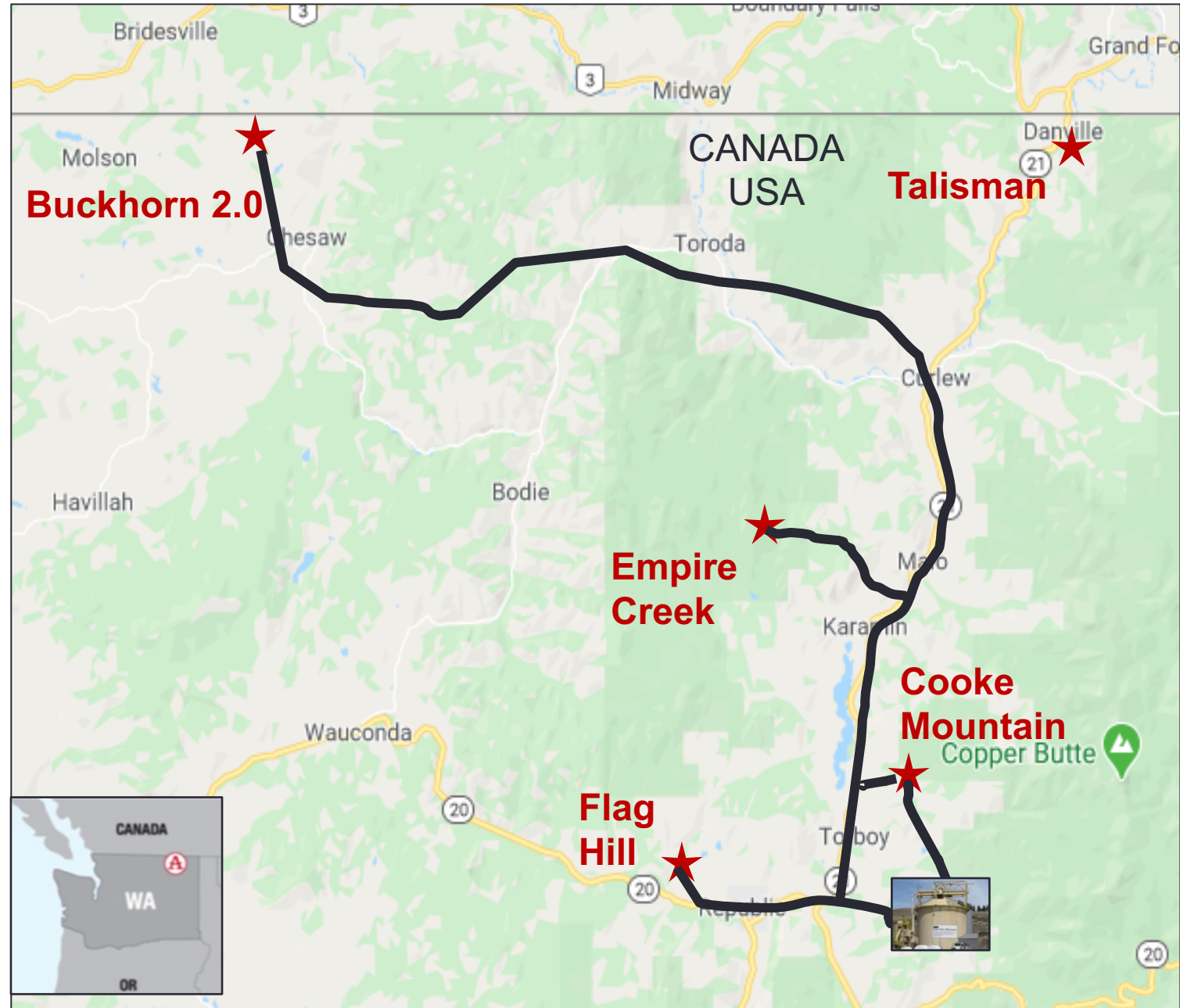
DISTANCE FROM MILL BY  
ROAD

BUCKHORN 2.0 - 80 KM

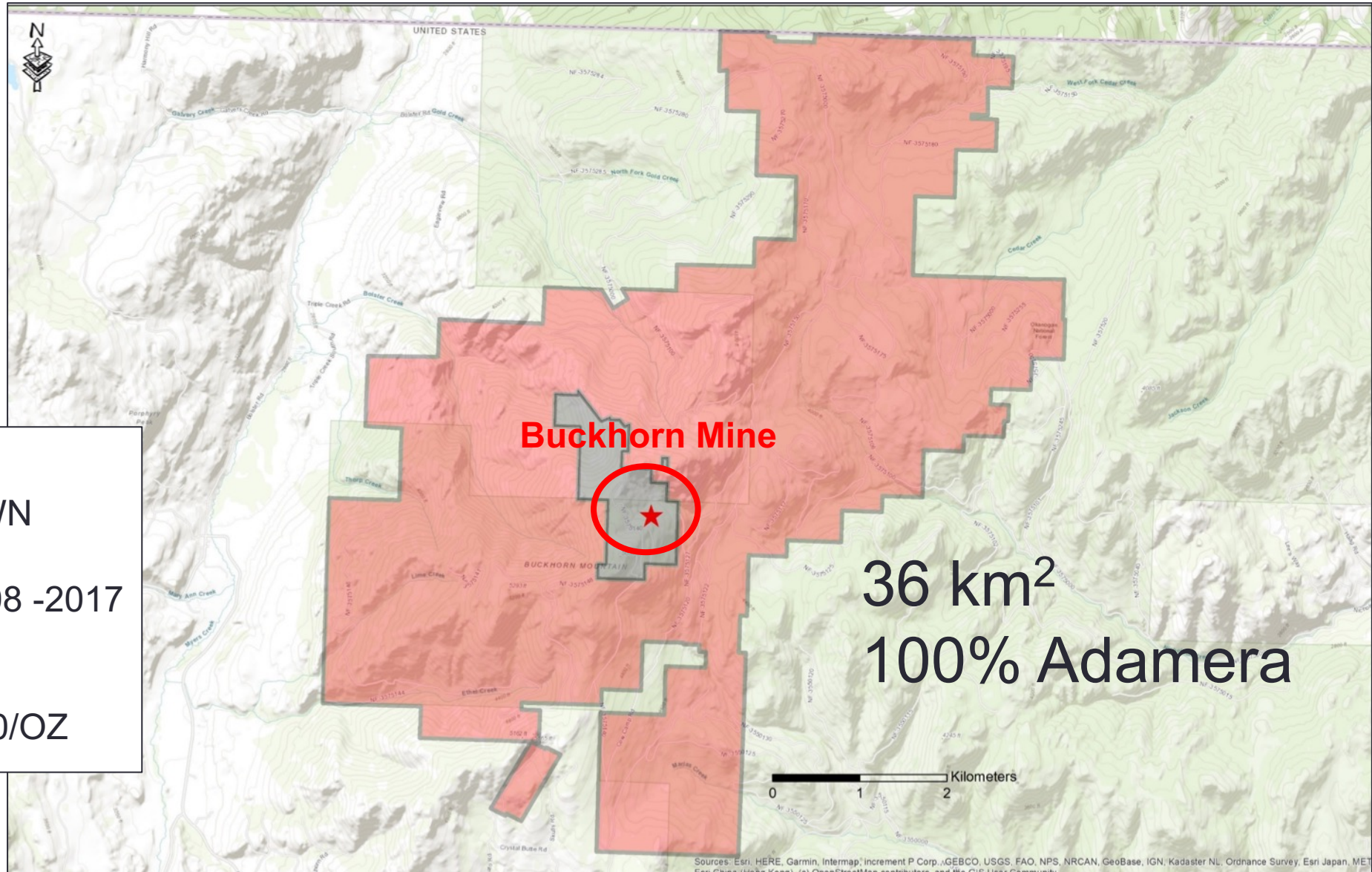
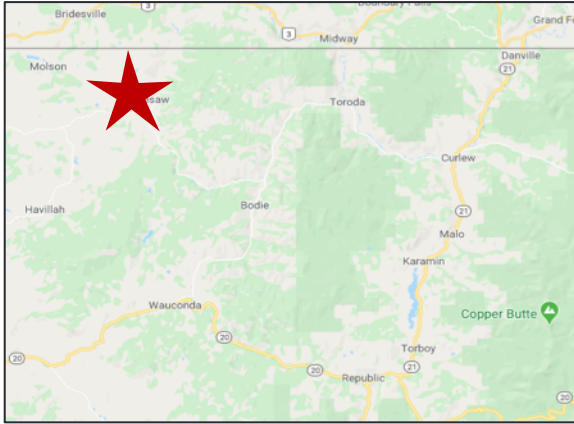
COOKE MOUNTAIN – 5KM

FLAG HILL – 12 KM

EMPIRE CREEK – 35 KM







## BUCKHORN MINE

- DISCOVERED BY CROWN RESOURCES
- MINED BY KINROSS 2008 -2017  
1.3 M OZ AU  
~ GRADE 13 G/T AU
- MINING COST \$320-\$670/OZ



## BUCKHORN 2.0

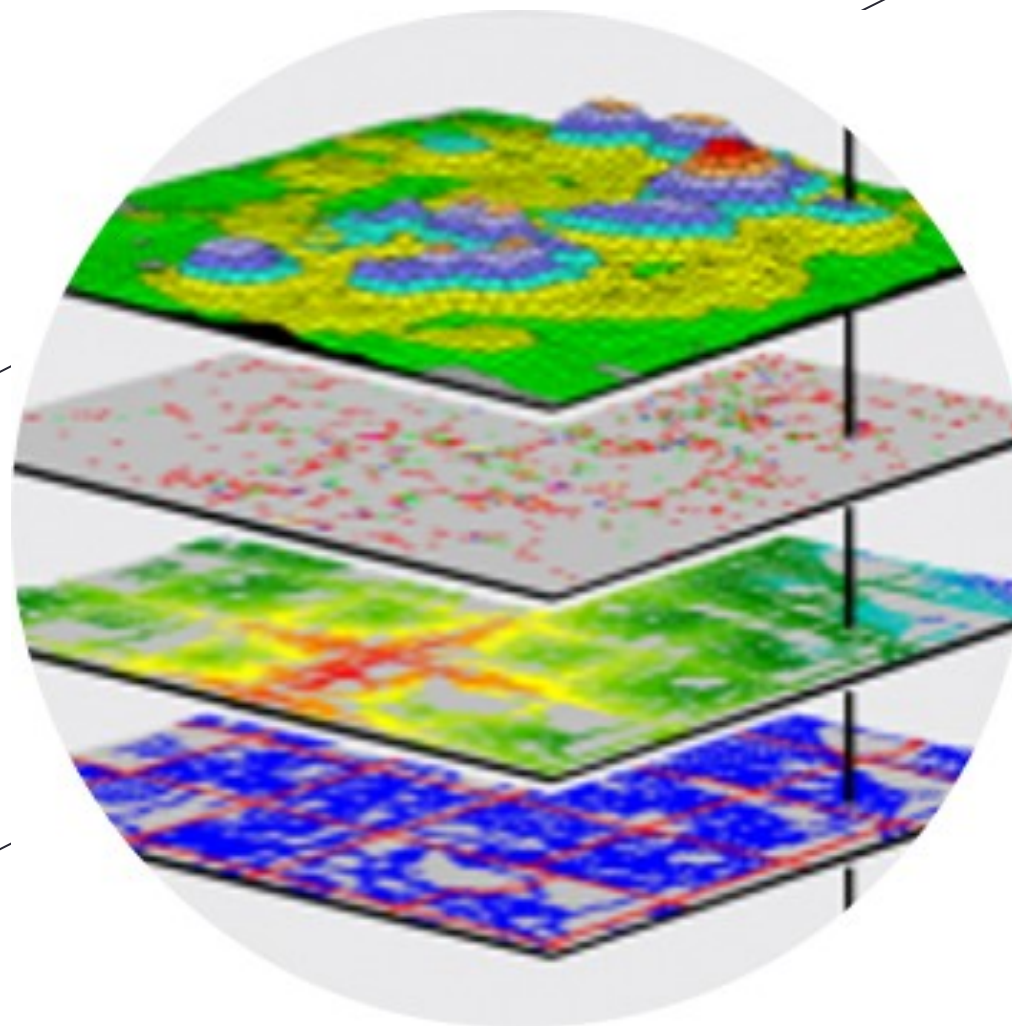
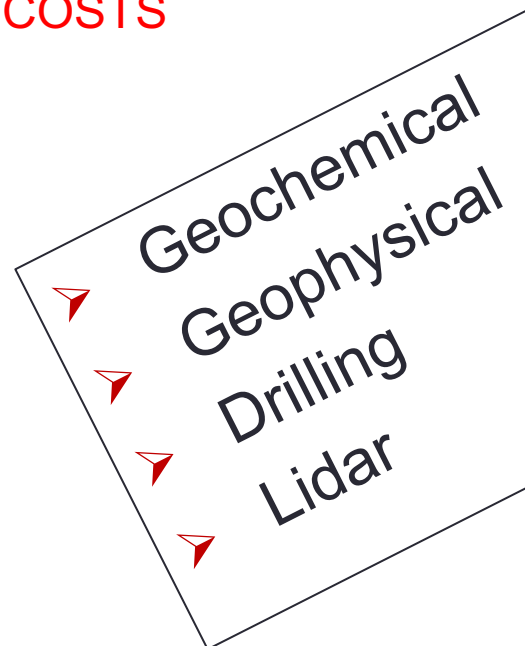
### DATA ACQUISITION PACKAGE

---

ACQUIRED DATA LATE 2021

ADVANCES EXPLORATION BY 6  
YEARS.

SAVES \$15,000,000 IN  
EXPLORATION COSTS



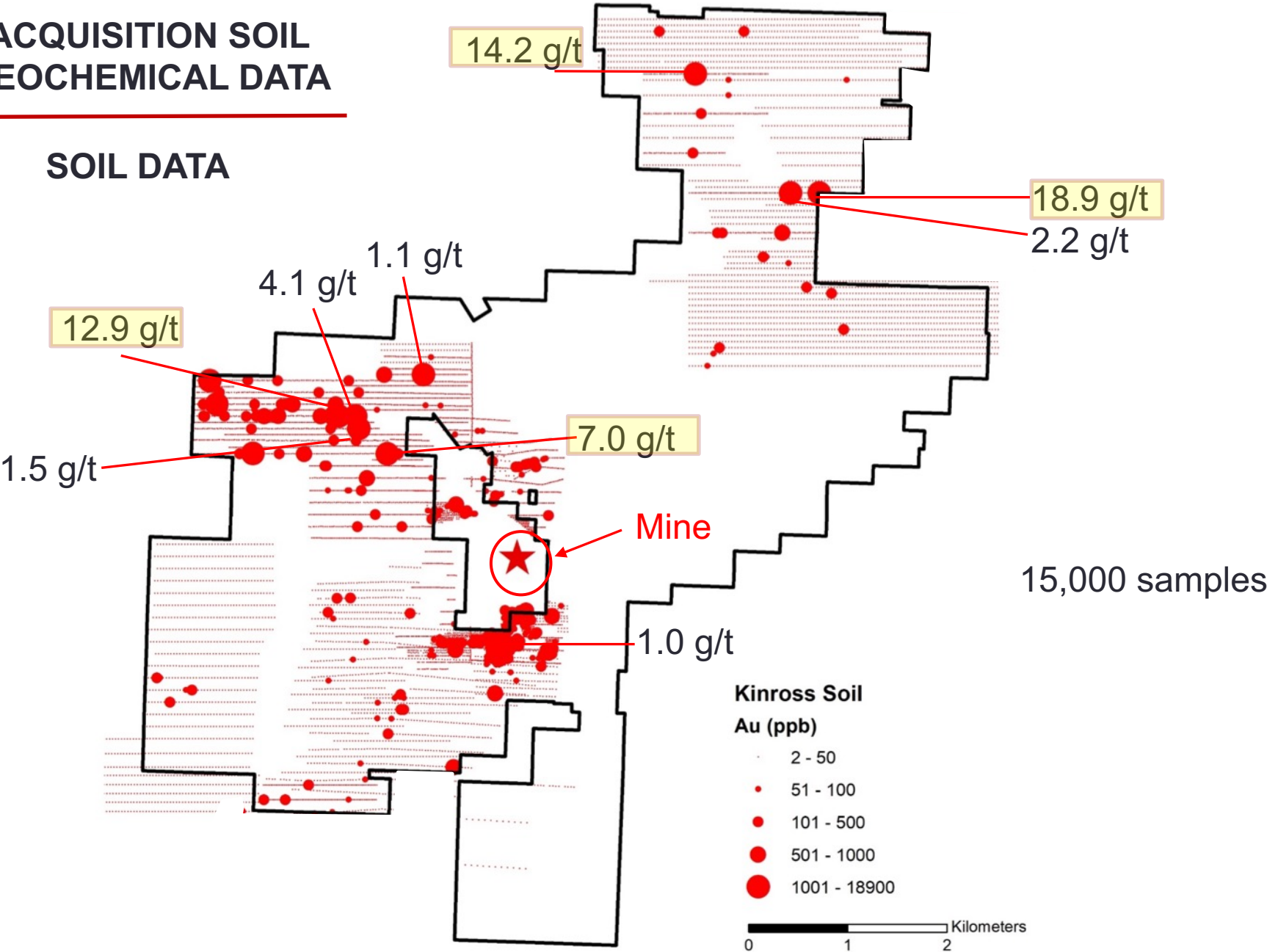
Targets



ACQUISITION SOIL  
GEOCHEMICAL DATA



SOIL DATA

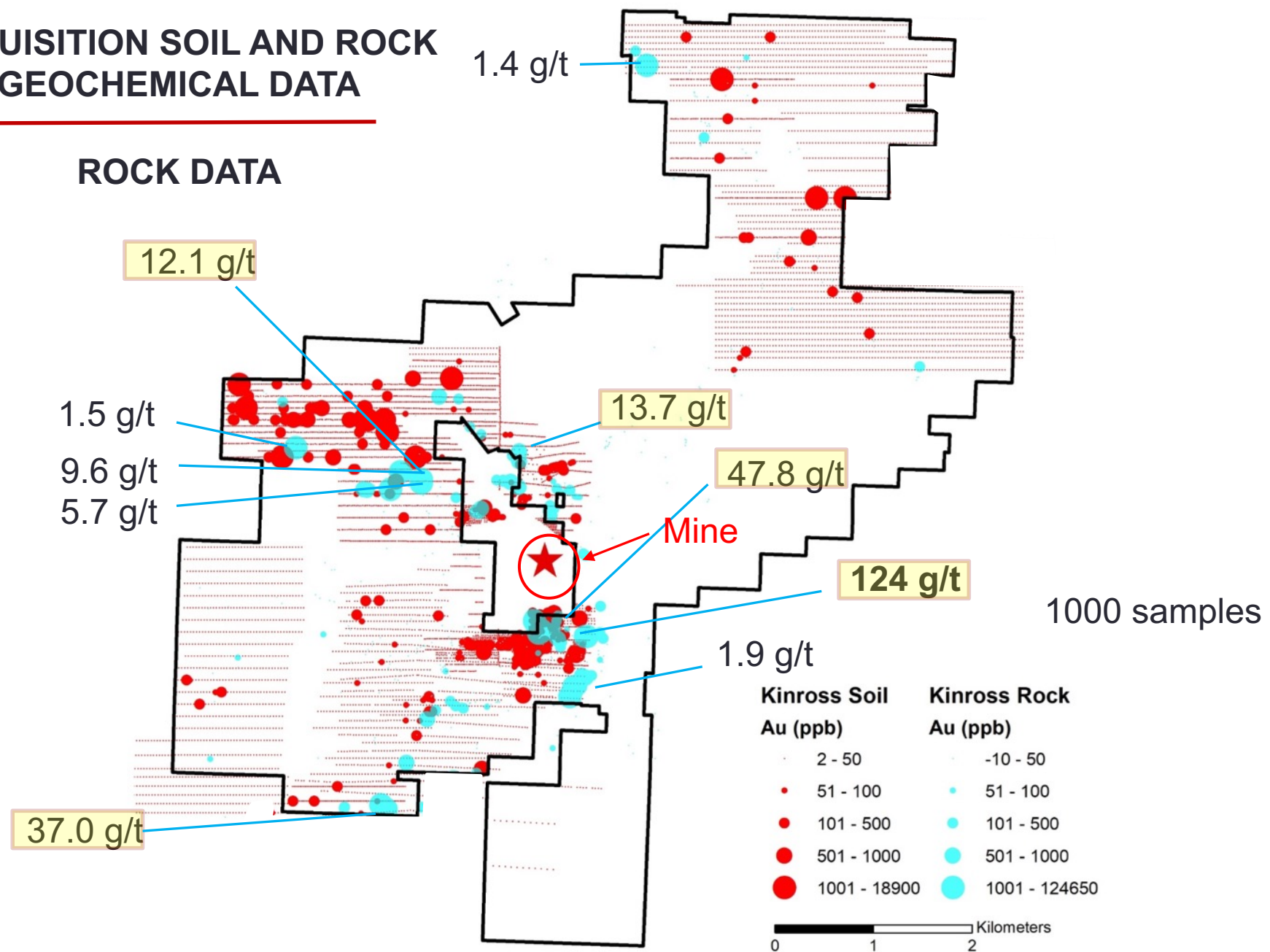






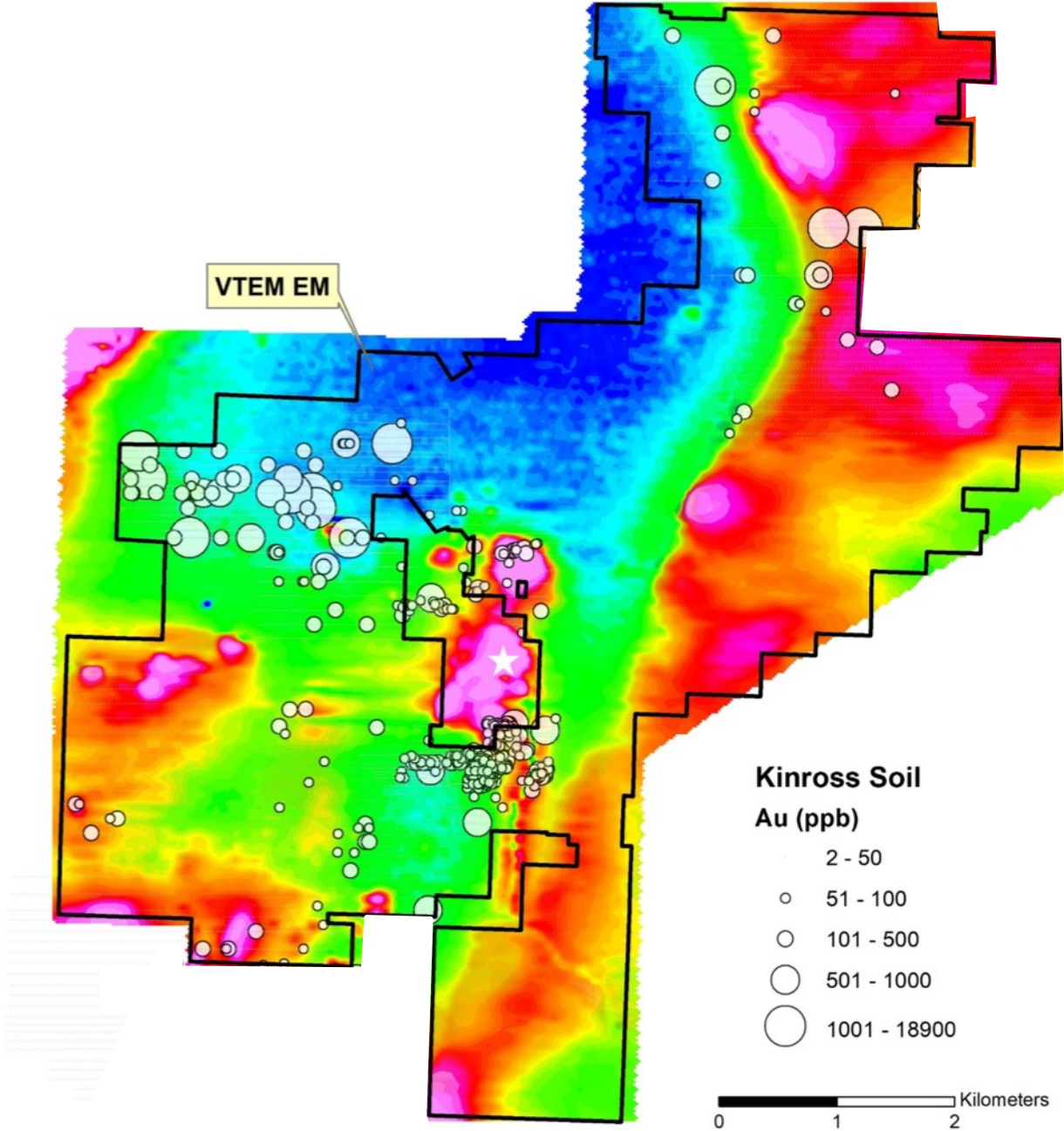
ACQUISITION SOIL AND ROCK  
GEOCHEMICAL DATA

ROCK DATA



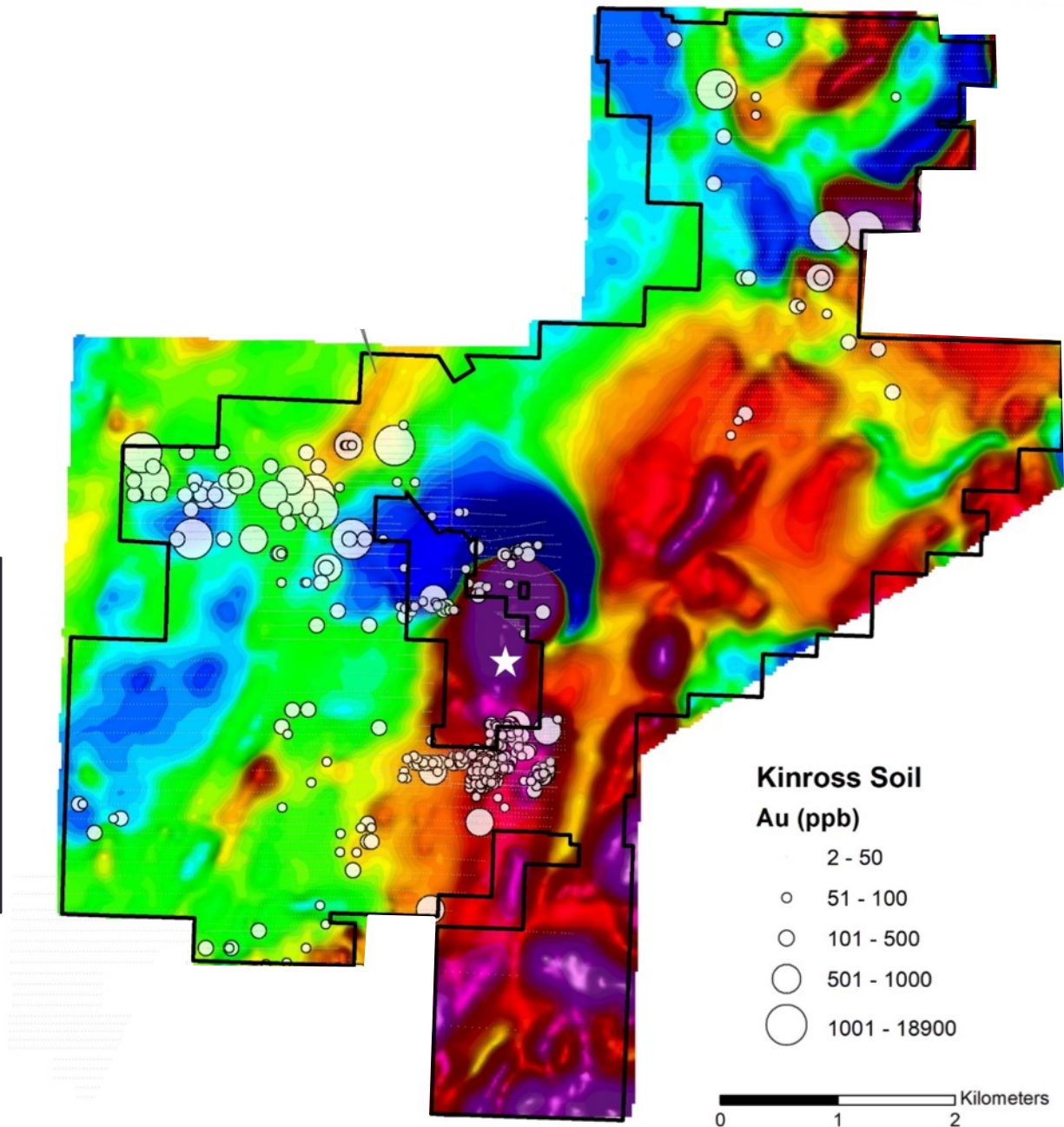
ACQUISITION AIRBORNE  
ELECTROMAGNETICS

DRILLING DONE IN EARLY 1990s  
AIRBORNE SURVEY FLOWN IN  
2008!

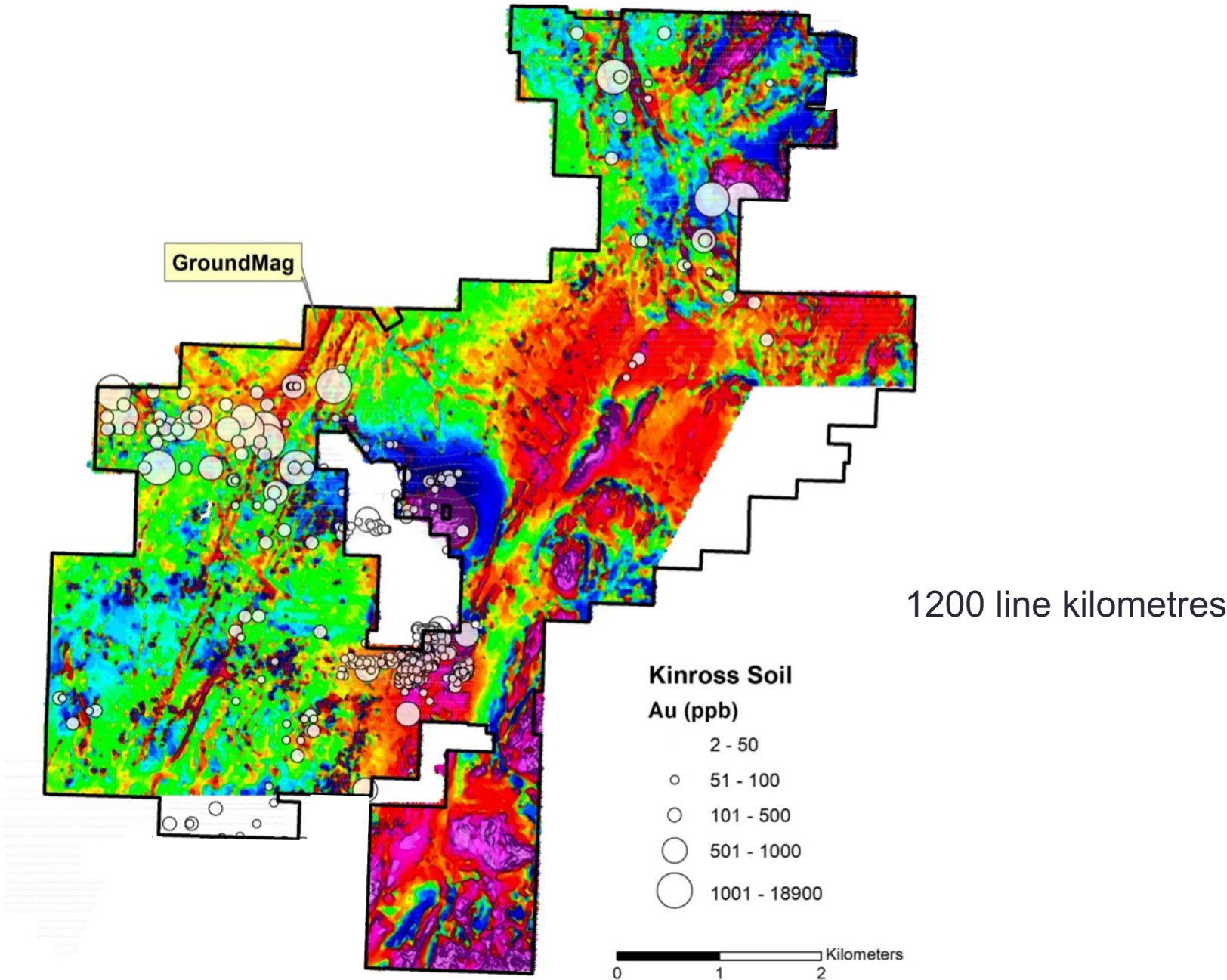




ACQUISITION AIRBORNE  
MAGNETICS

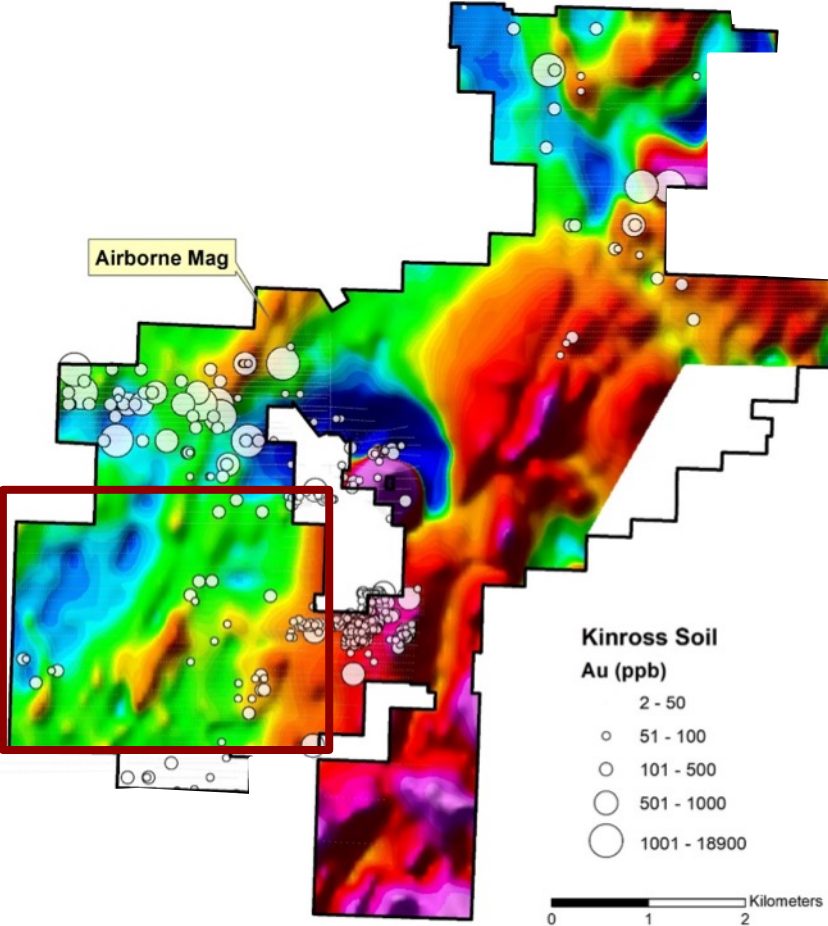


ADAMERA  
GROUND MAGNETICS

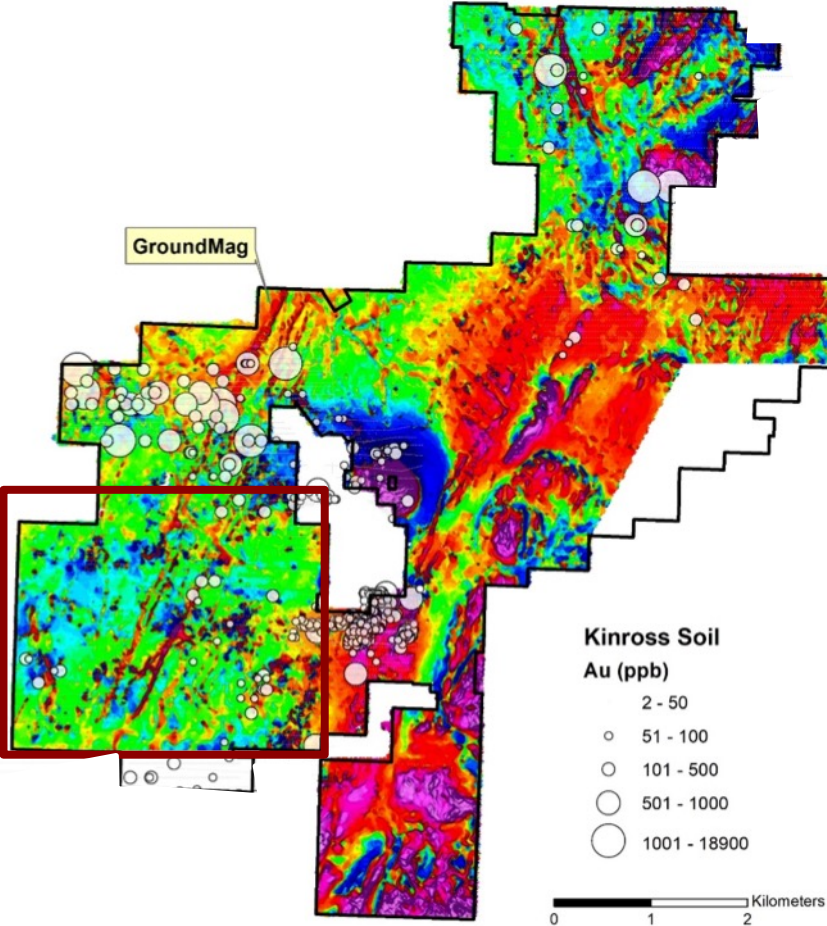




ACQUISITION AIRBORNE  
MAGNETICS



ADAMERA  
GROUND MAGNETICS





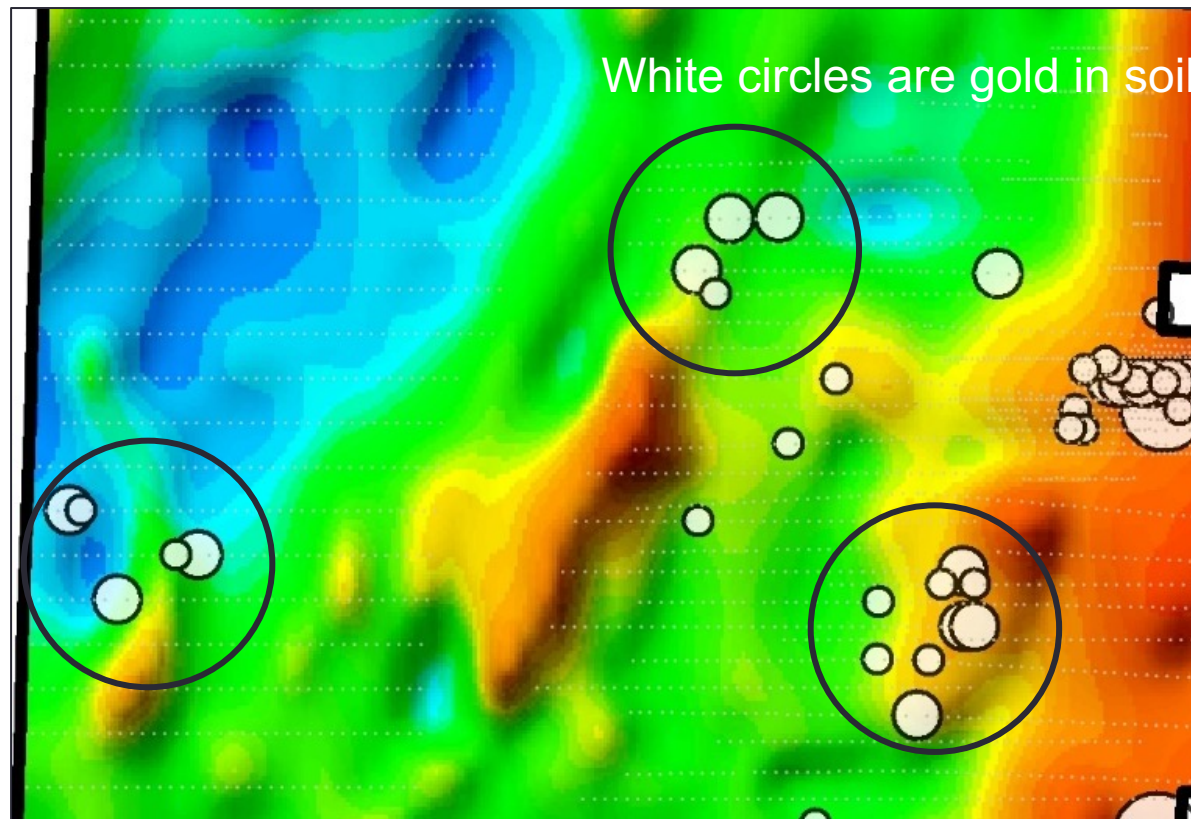
## ACQUISITION AIRBORNE MAGNETICS

---

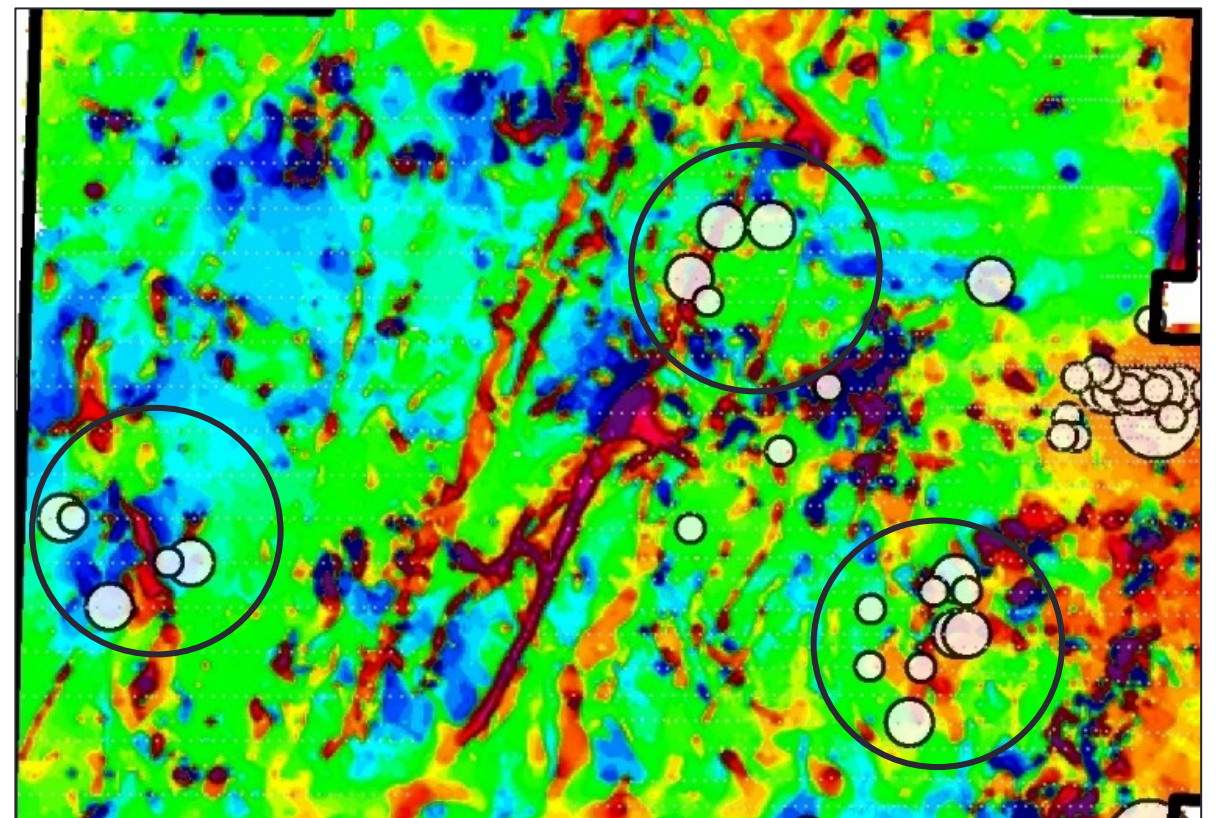
## ADAMERA GROUND MAGNETICS

---

NOTE THE DIFFERENCE IN DETAIL BETWEEN GROUND AND AIRBORNE MAGNETICS.



Low Resolution



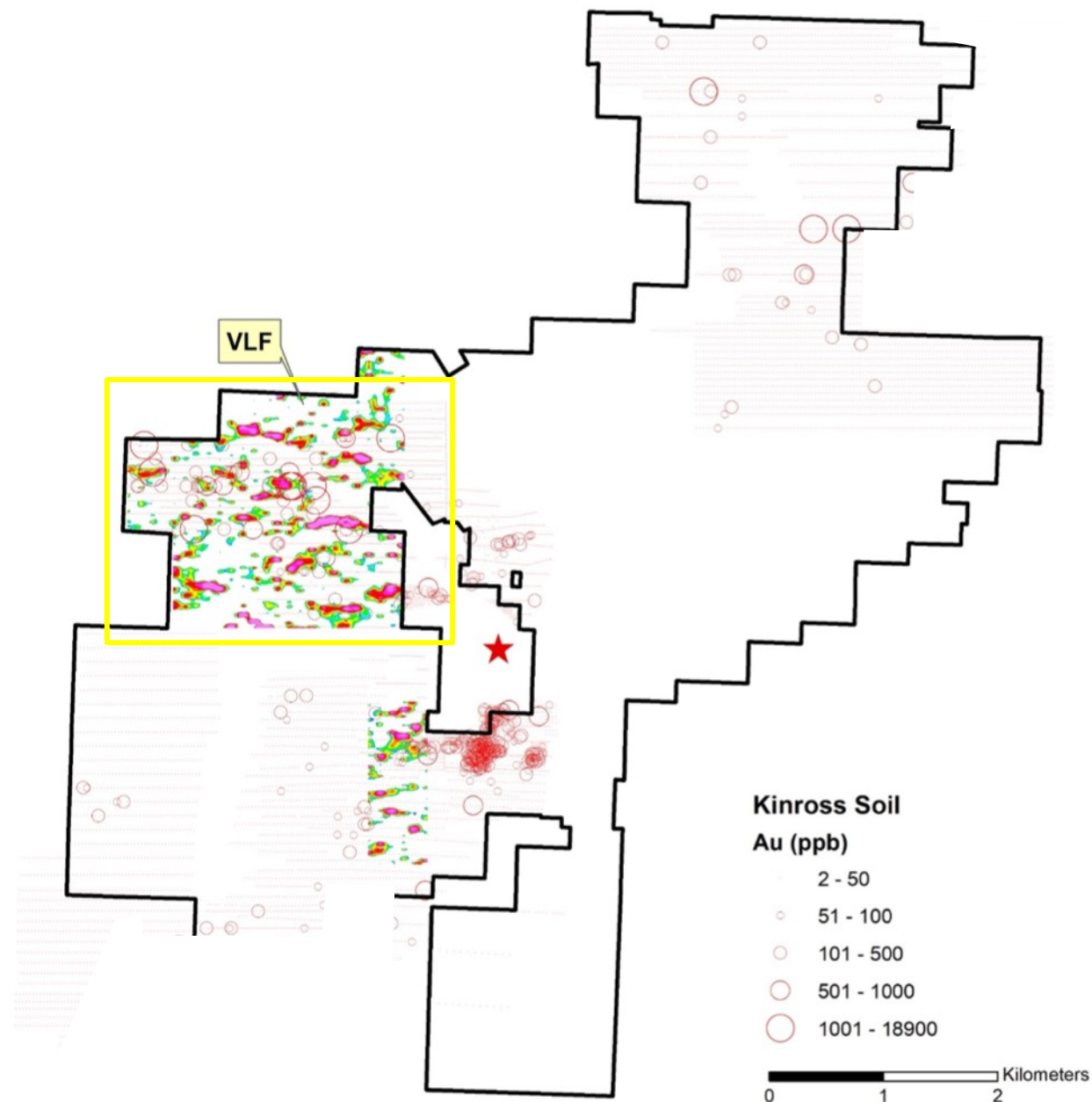
High Resolution



## ADAMERA TEST VLF- EM SURVEY

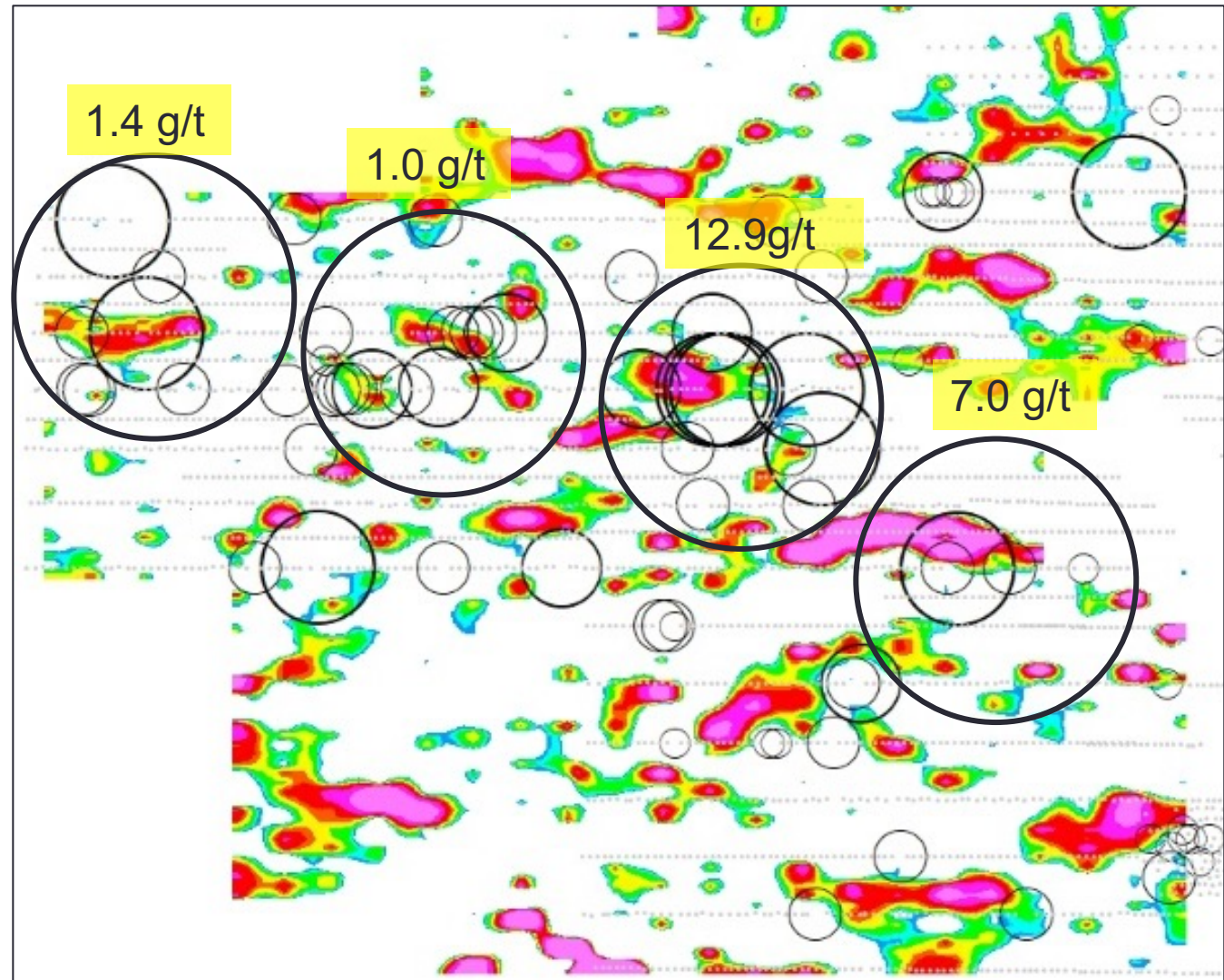
IN 2021 ADAMERA COMPLETED A TEST SURVEY ON A SPECIFIC AREA OF THE PROJECT.

COMPLETION OF VLF SURVEY OVER THE PROJECT WILL TAKE PLACE IN 2022



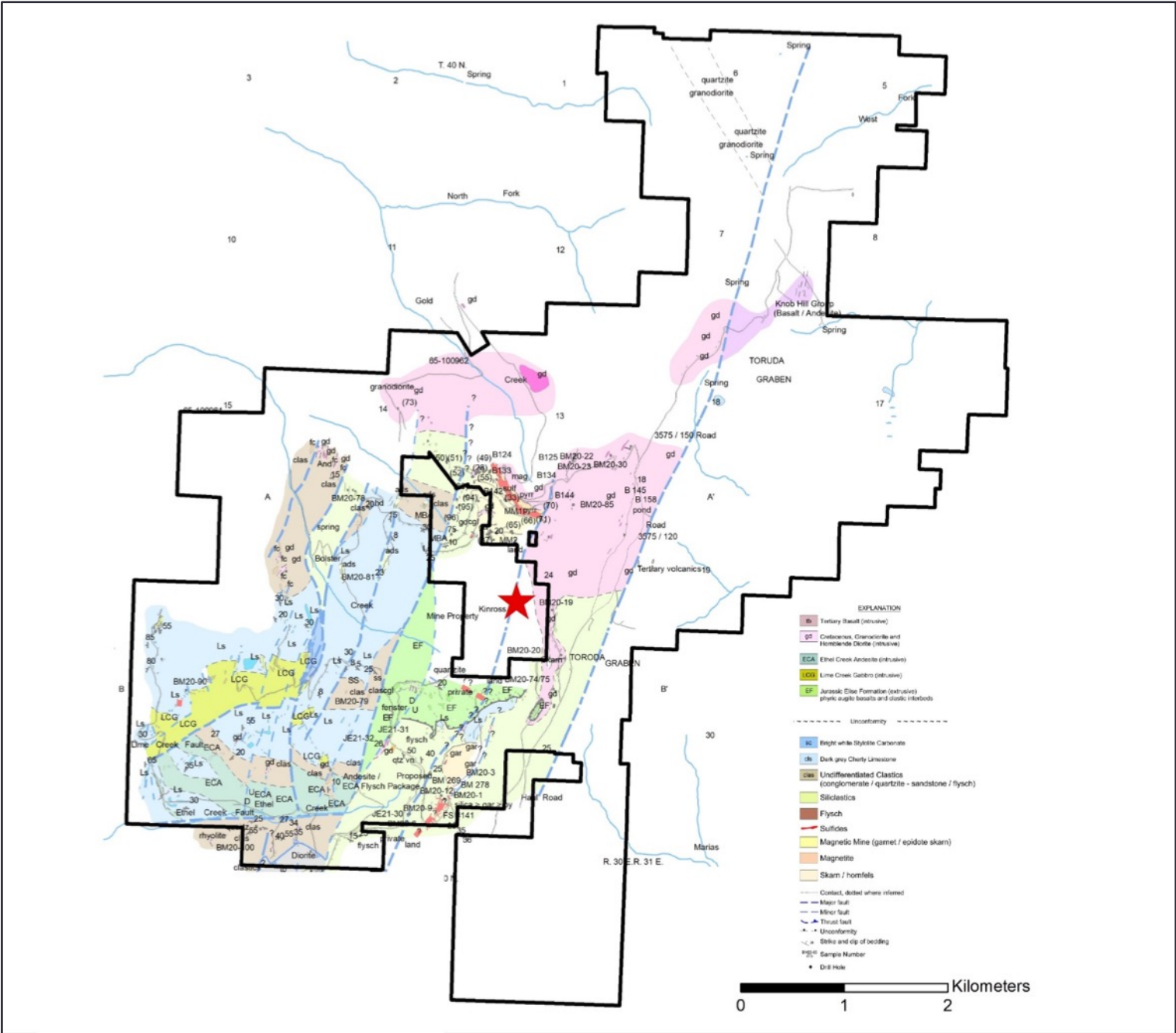
## VLF- EM SOIL COINCIDENCE

CORRELATION BETWEEN GOLD  
IN SOILS AND CONDUCTORS



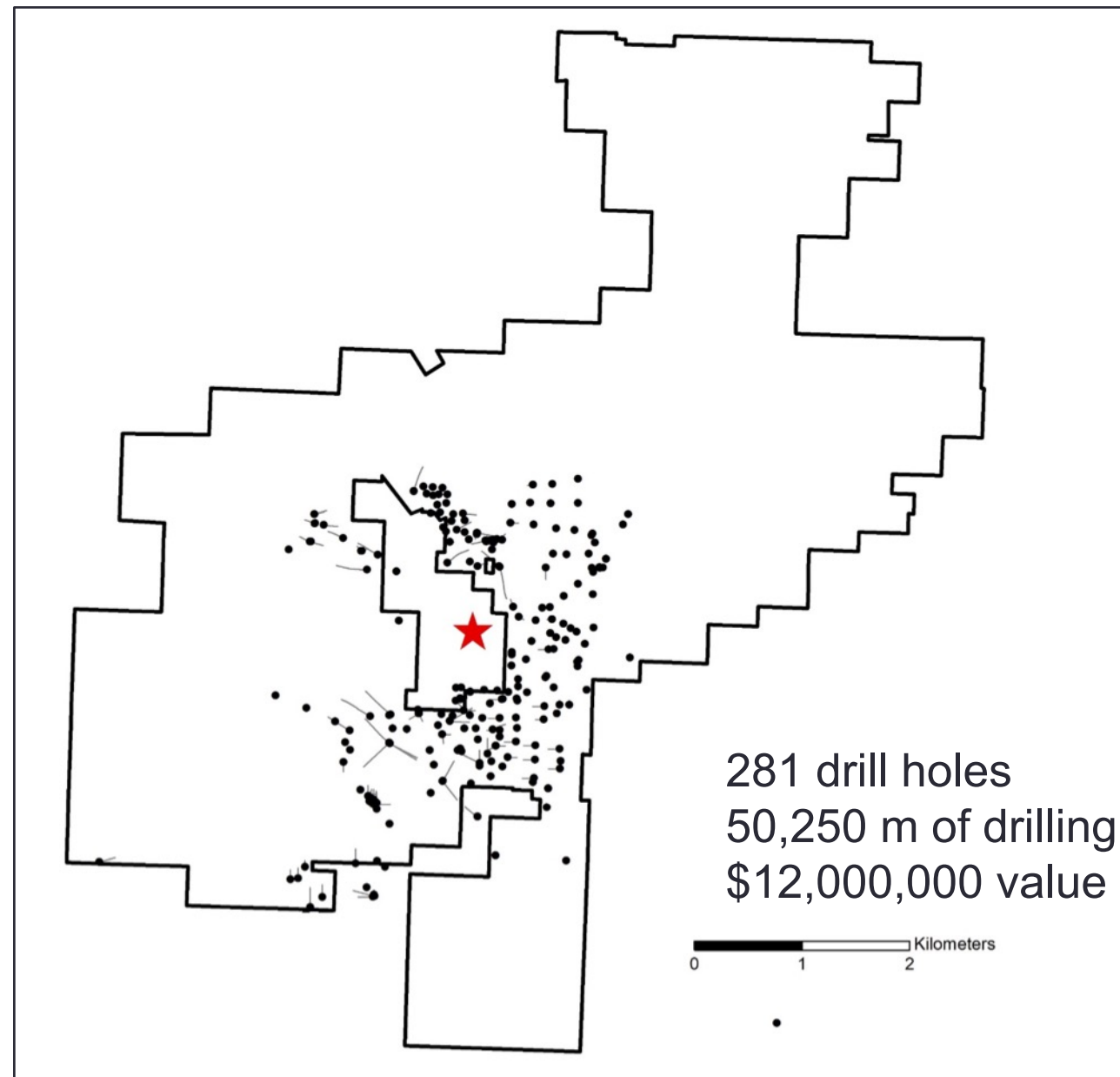


ADAMERA  
GEOLOGY MAP



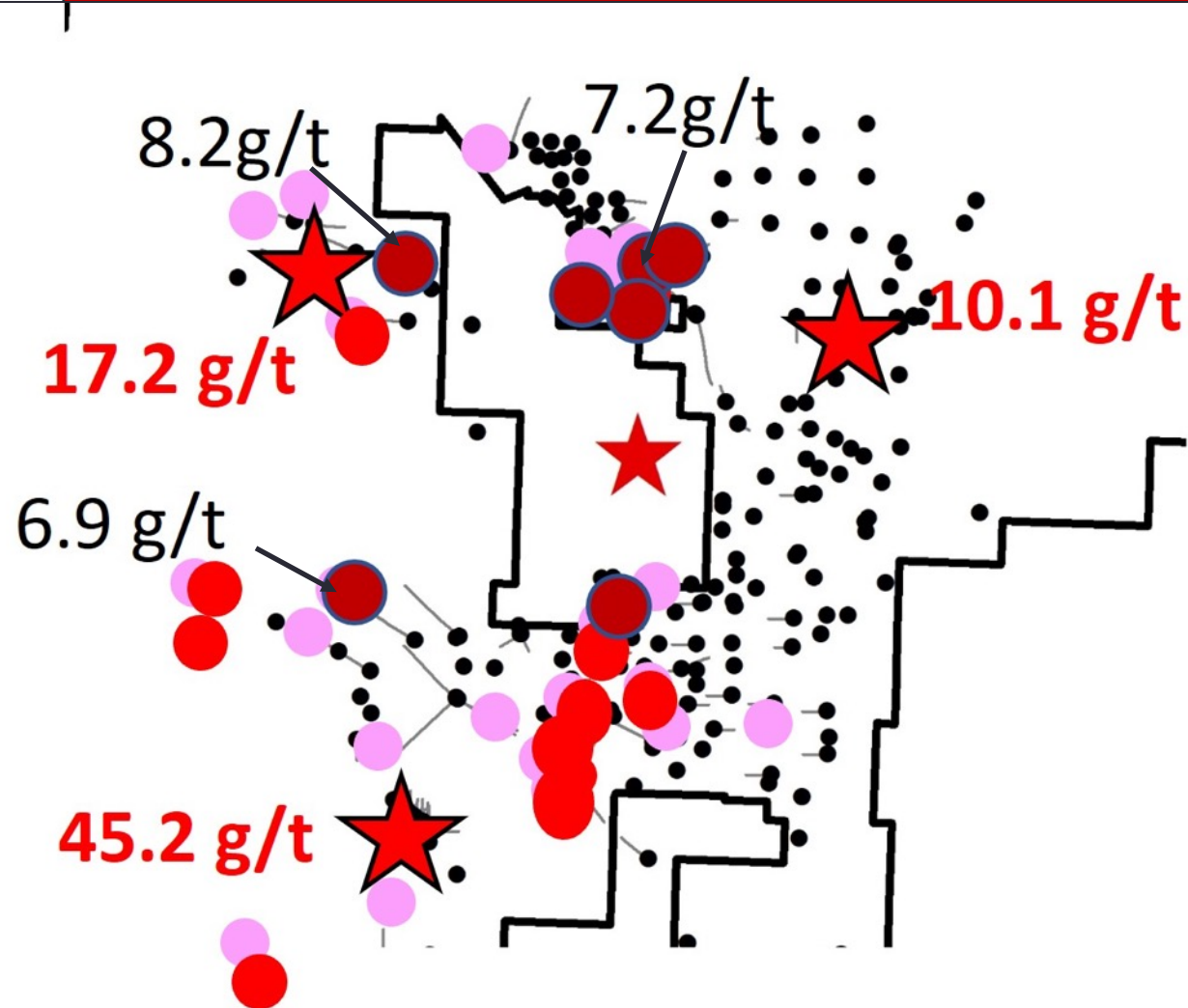
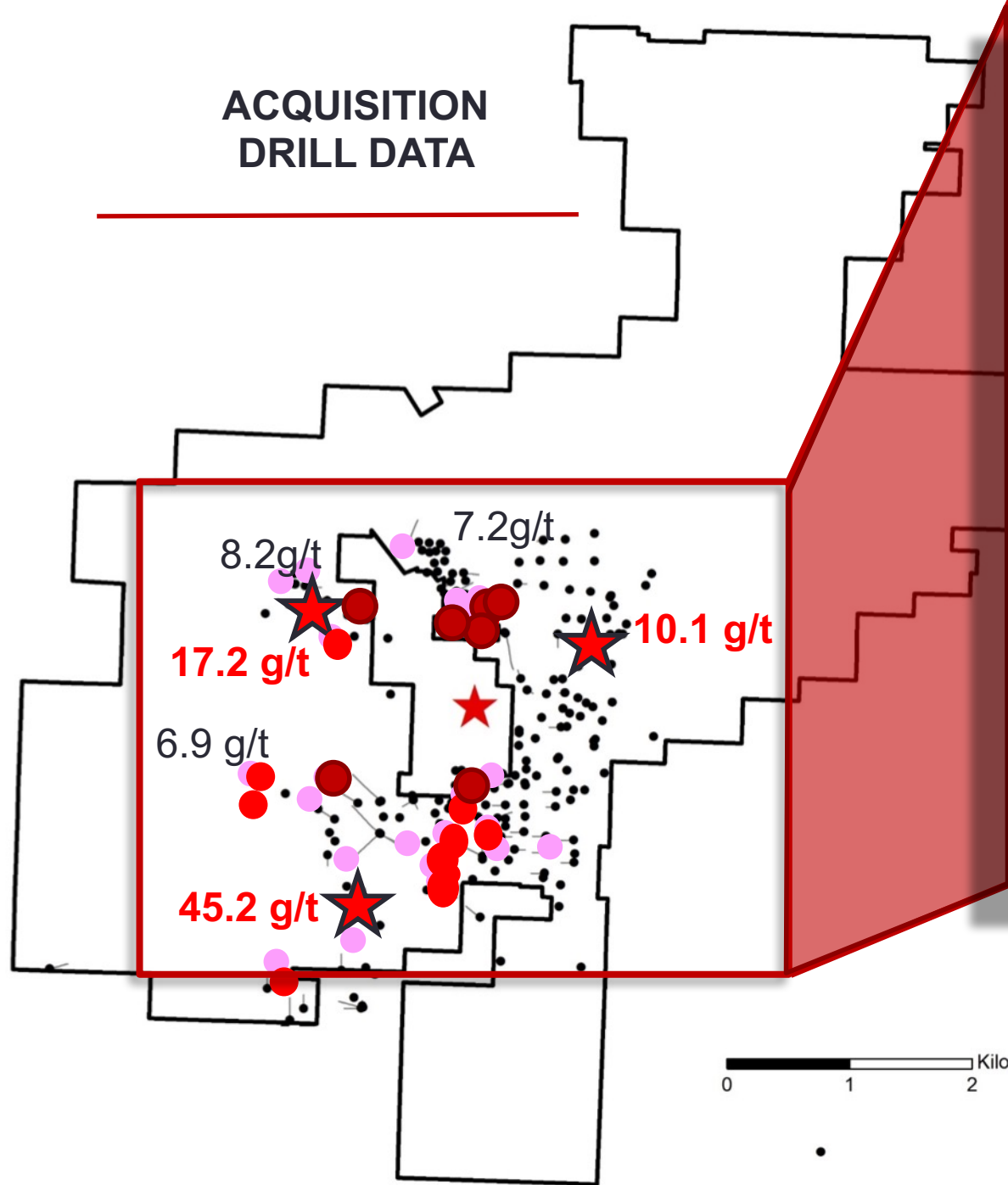
## ACQUISITION DRILL DATA

---



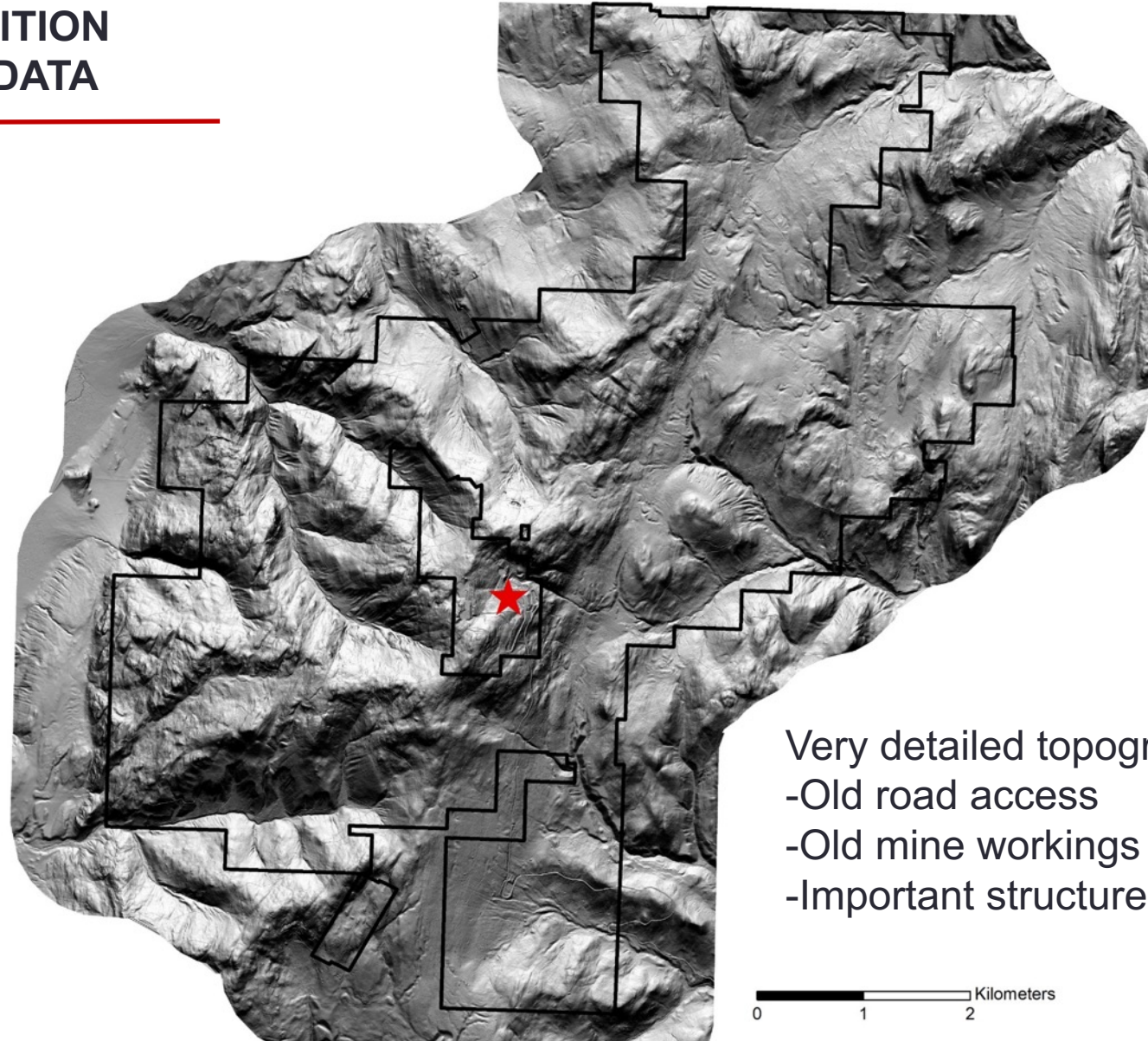
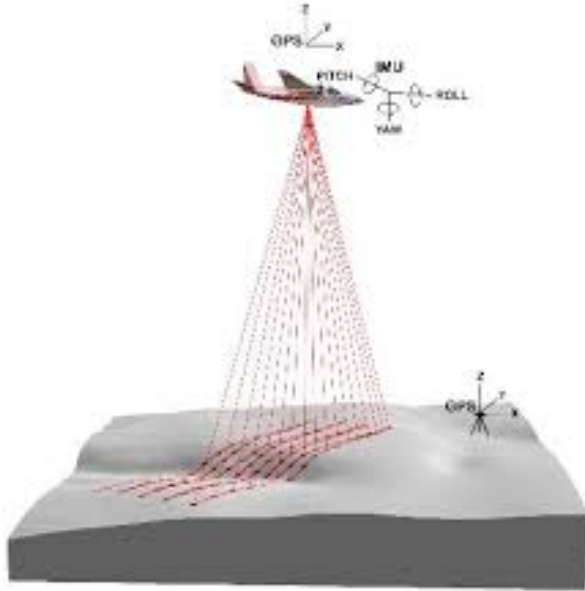


# ACQUISITION DRILL DATA





## ACQUISITION LIDAR DATA



Very detailed topography  
-Old road access  
-Old mine workings  
-Important structures

0 1 2 Kilometers

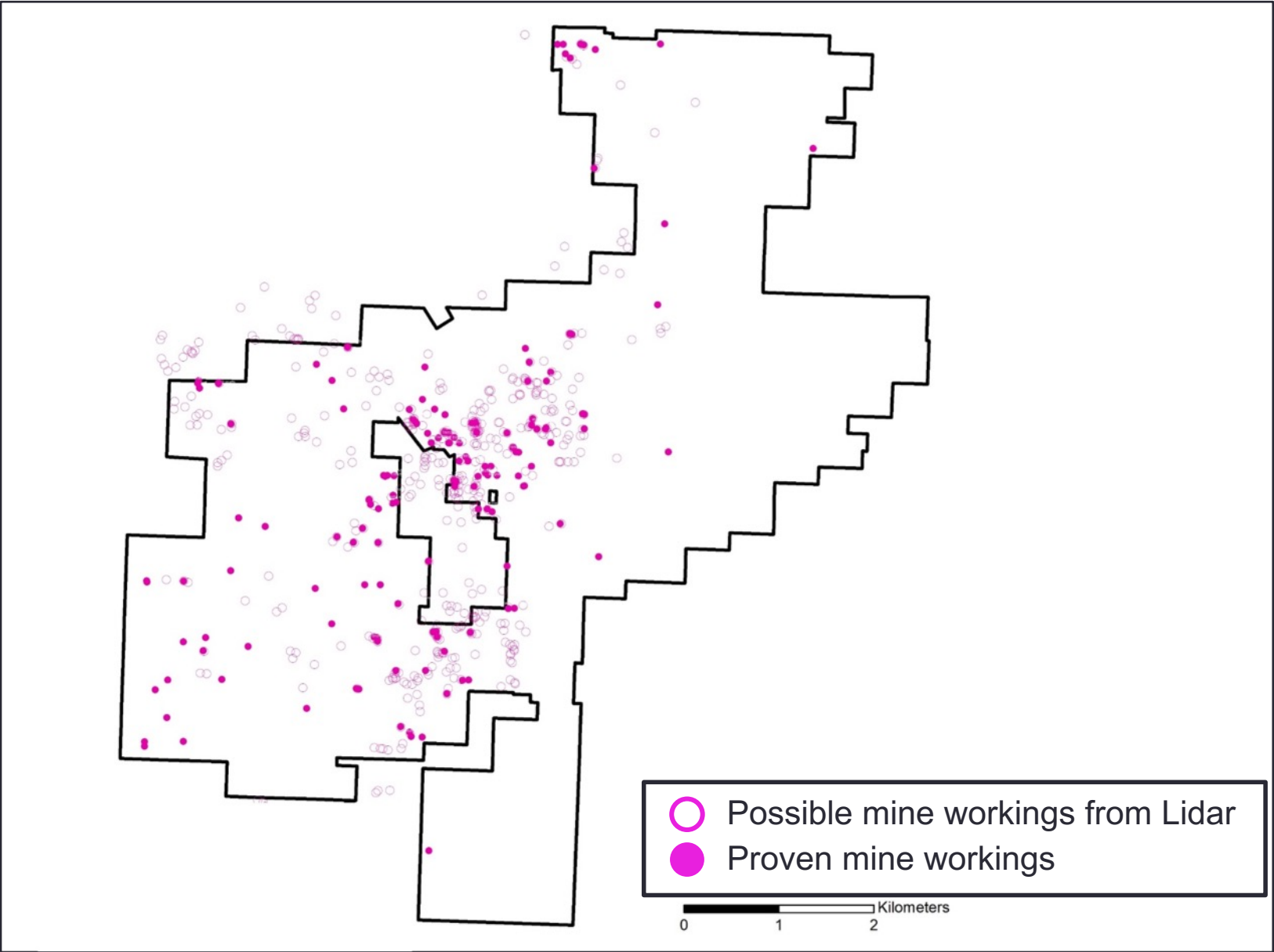


**ADAMERA  
HISTORIC MINE WORKINGS**

Mine workings



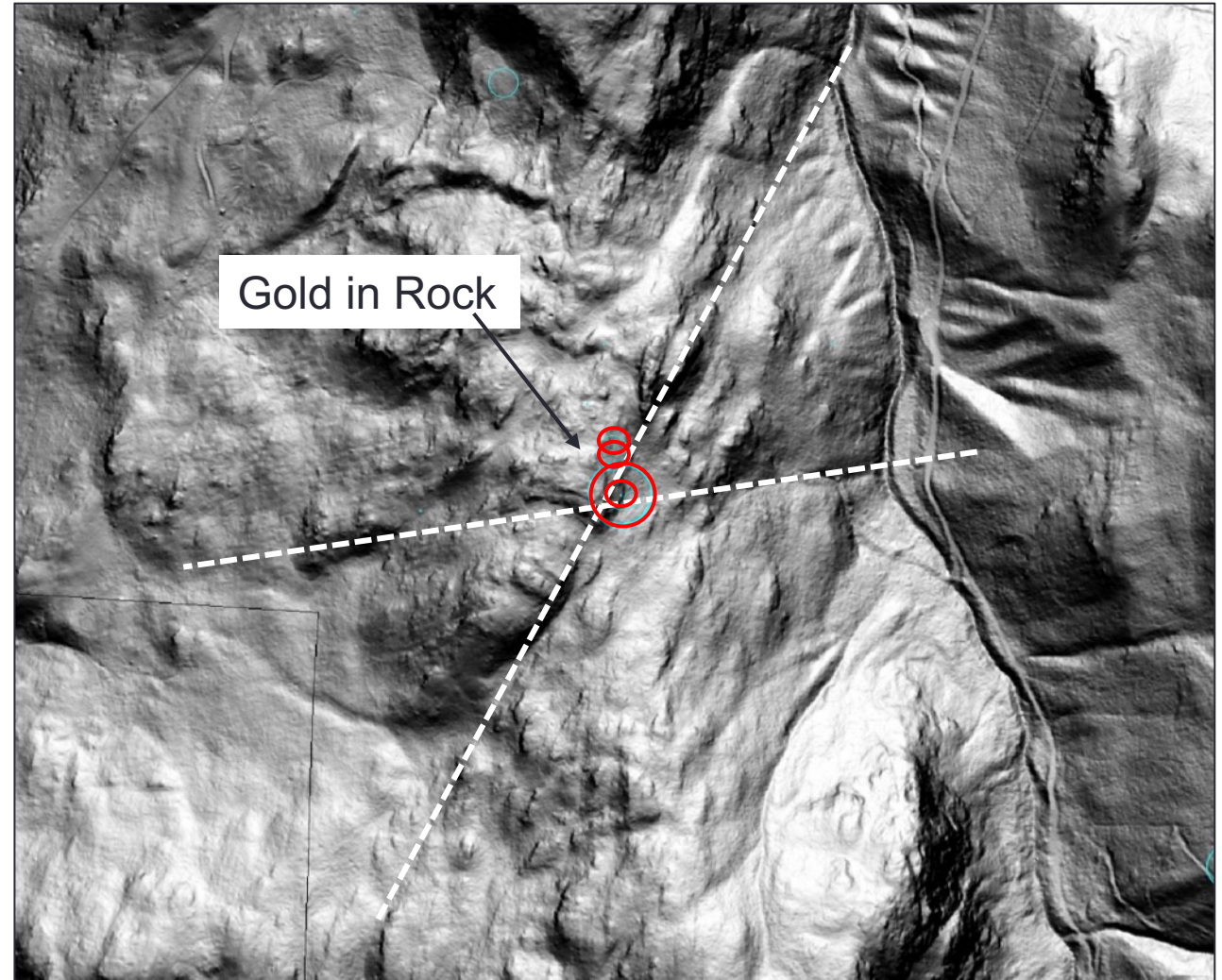
Lidar showing Mine workings



## ACQUISITION LIDAR DATA

---

SURFACE GEOCHEMISTRY AND LIDAR  
ALLOWS TO COMBINE SHOWINGS.



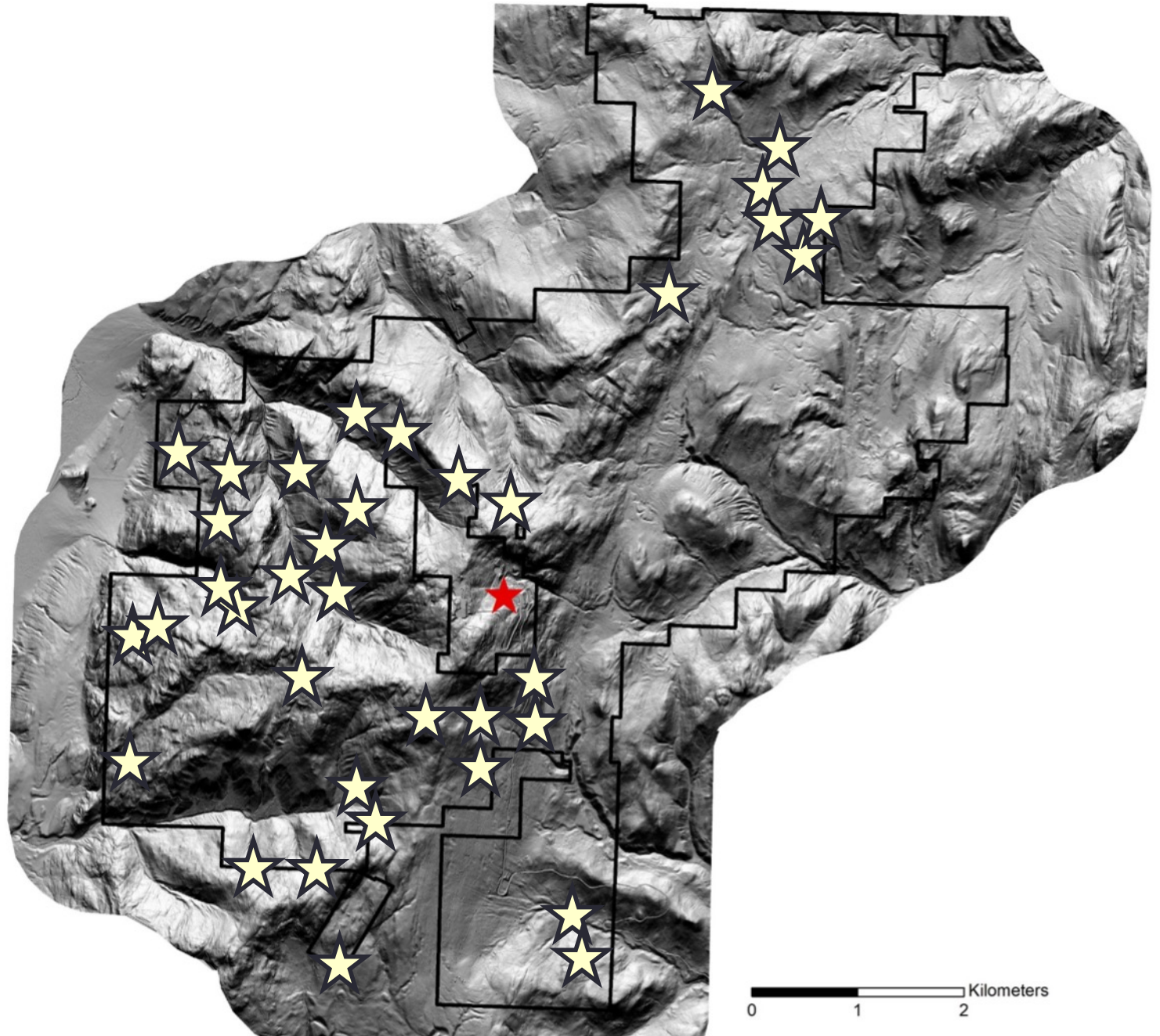


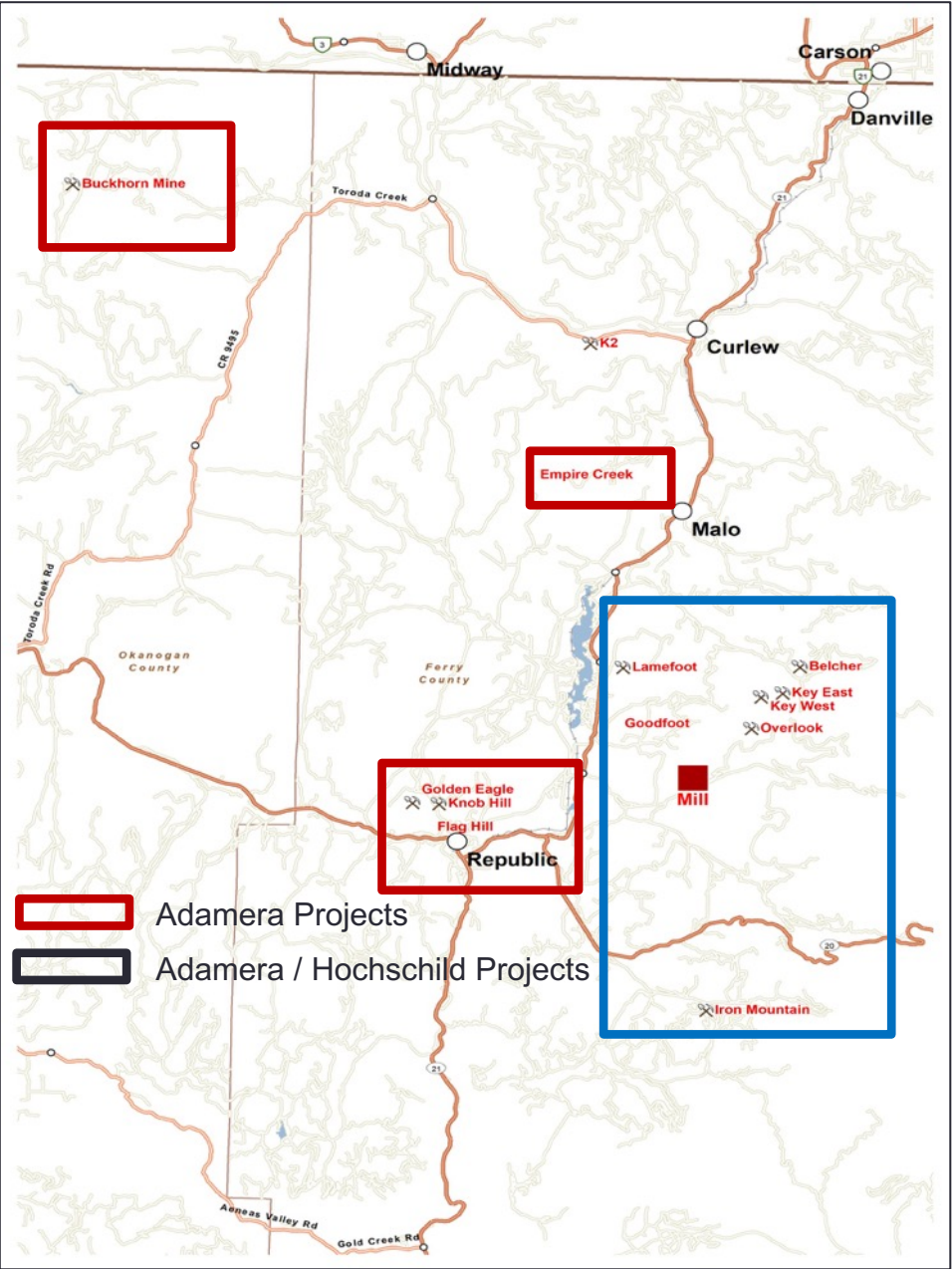
**ADAMERA  
NUMEROUS TARGETS  
GENERATED!!**

---

PERMITS PENDING

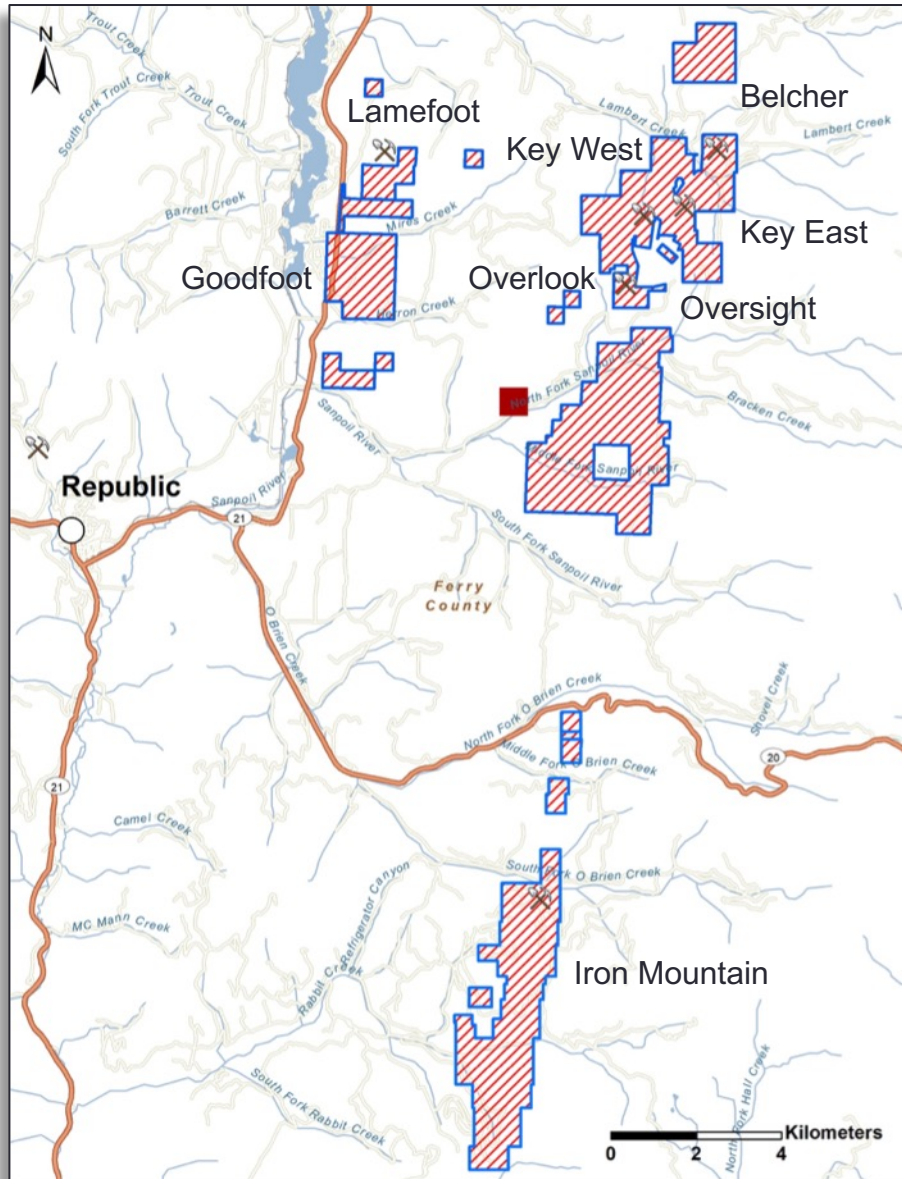
DRILL RIGS READY







## Cooke Mountain



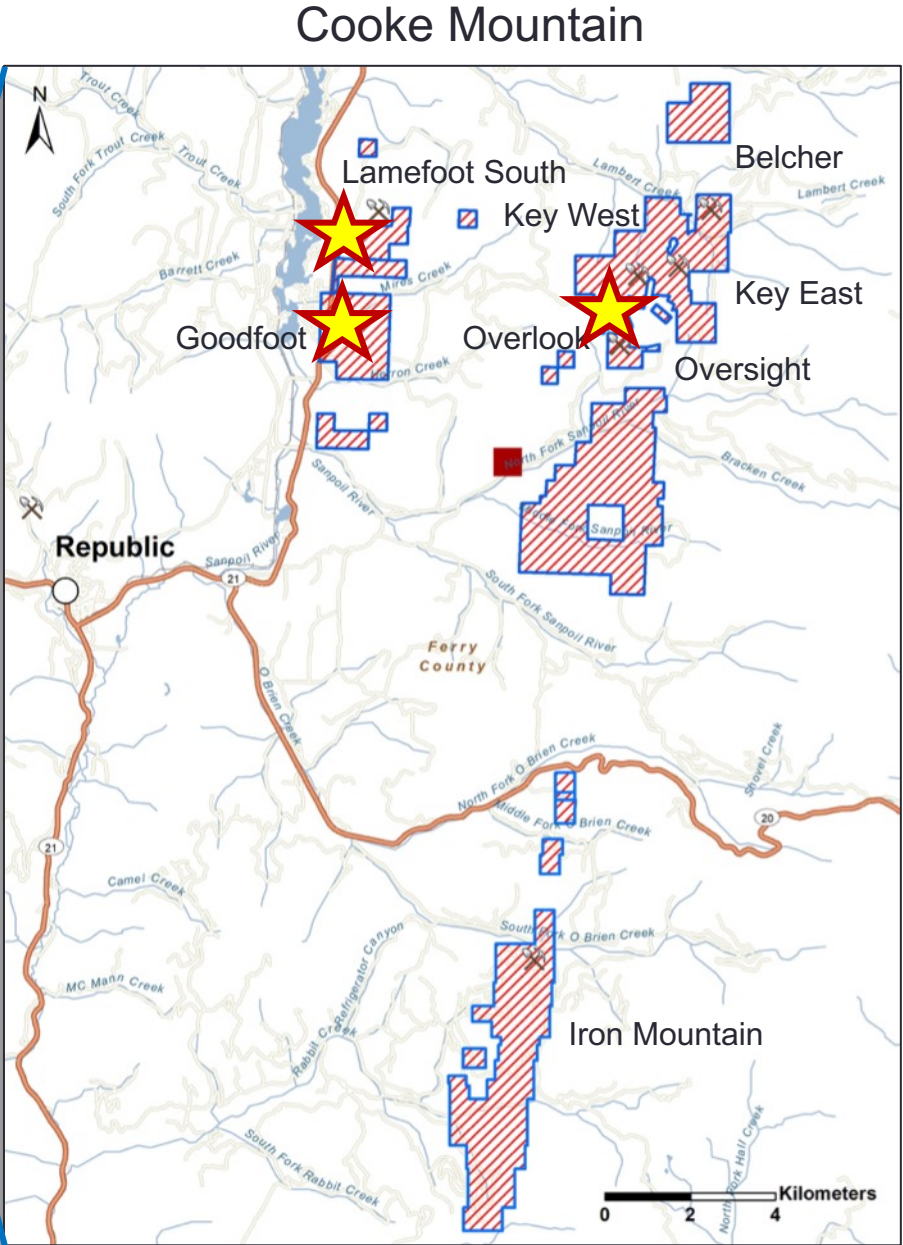
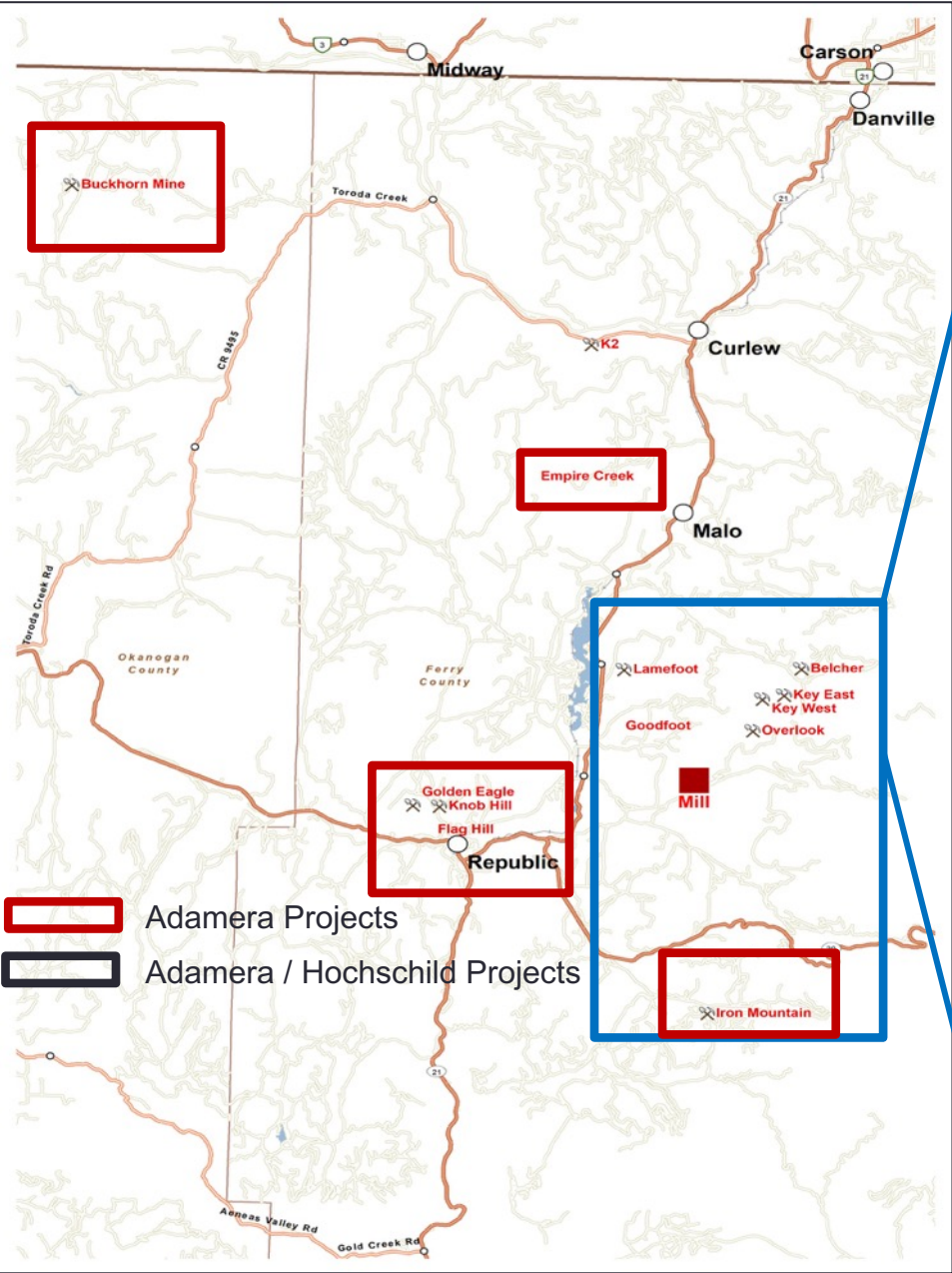
**PHASE 1** - HOCHSCHILD CAN EARN A 60% INTEREST IN THE PROJECT BY INCURRING US\$8,000,000 (~CAN \$10,500,000) IN EXPLORATION EXPENDITURES OVER 5 YEARS.

**PHASE 2** - HOCHSCHILD CAN EARN AN ADDITIONAL 15% INTEREST IN THE PROJECT BY SOLE FUNDING A FEASIBILITY STUDY WITHIN A FURTHER 3 YEARS.



# HOCHSCHILD

(LON) - HOC a leading underground precious metals producer focusing on high grade silver and gold deposits



ADAMERA / HOCHSCHILD  
DRILL PROGRAM ON THE  
COOKE MOUNTAIN  
PROJECT.



- 3000 METRE DRILL PROGRAM
- 8 DRILL HOLES TESTED HIGH PRIORITY TARGETS ON OVERSIGHT, GOODFOOT AND LAMEFOOT
- **FULL ASSAYS PENDING**
- DEVELOPING NEW TARGETS AT IRON MOUNTAIN

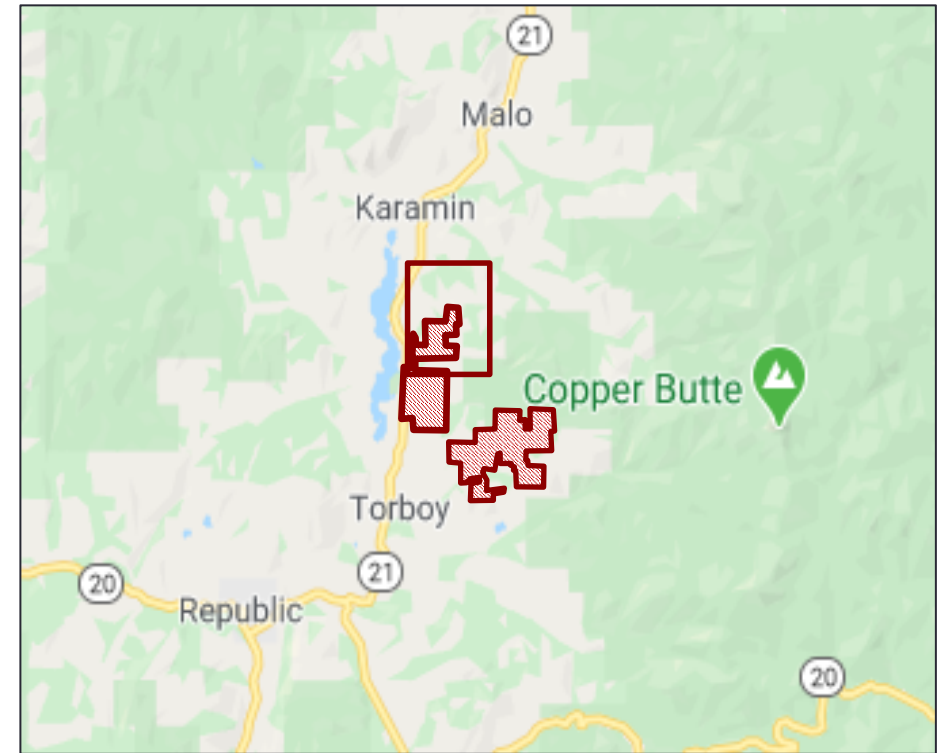




2021 DRILL HOLE PL- 6

- 4.7 G/T AU OVER 2.7 M  
*INCLUDING*
- 10.7 G/T AU OVER .76 M

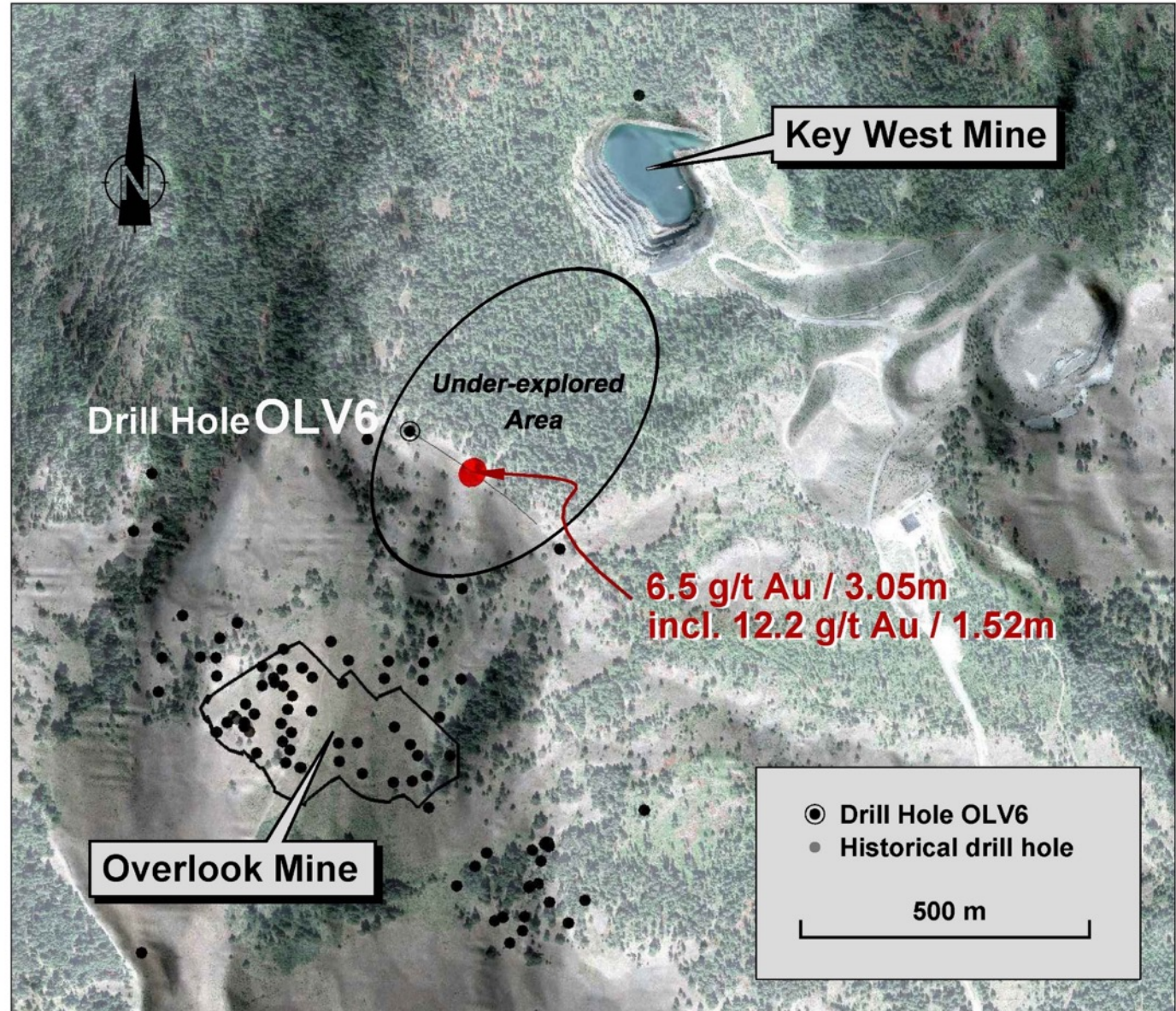
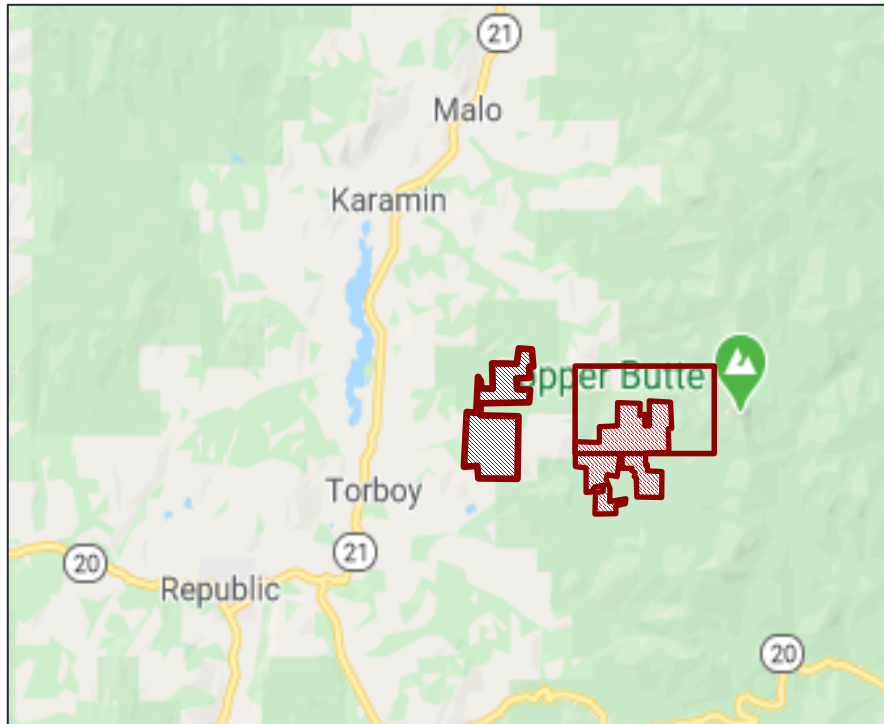
WITHIN AN 11 METRE ZONE  
CONTAINING ELEVATED GOLD



*Selected core photos from gold rich zone between 24-27 metres*

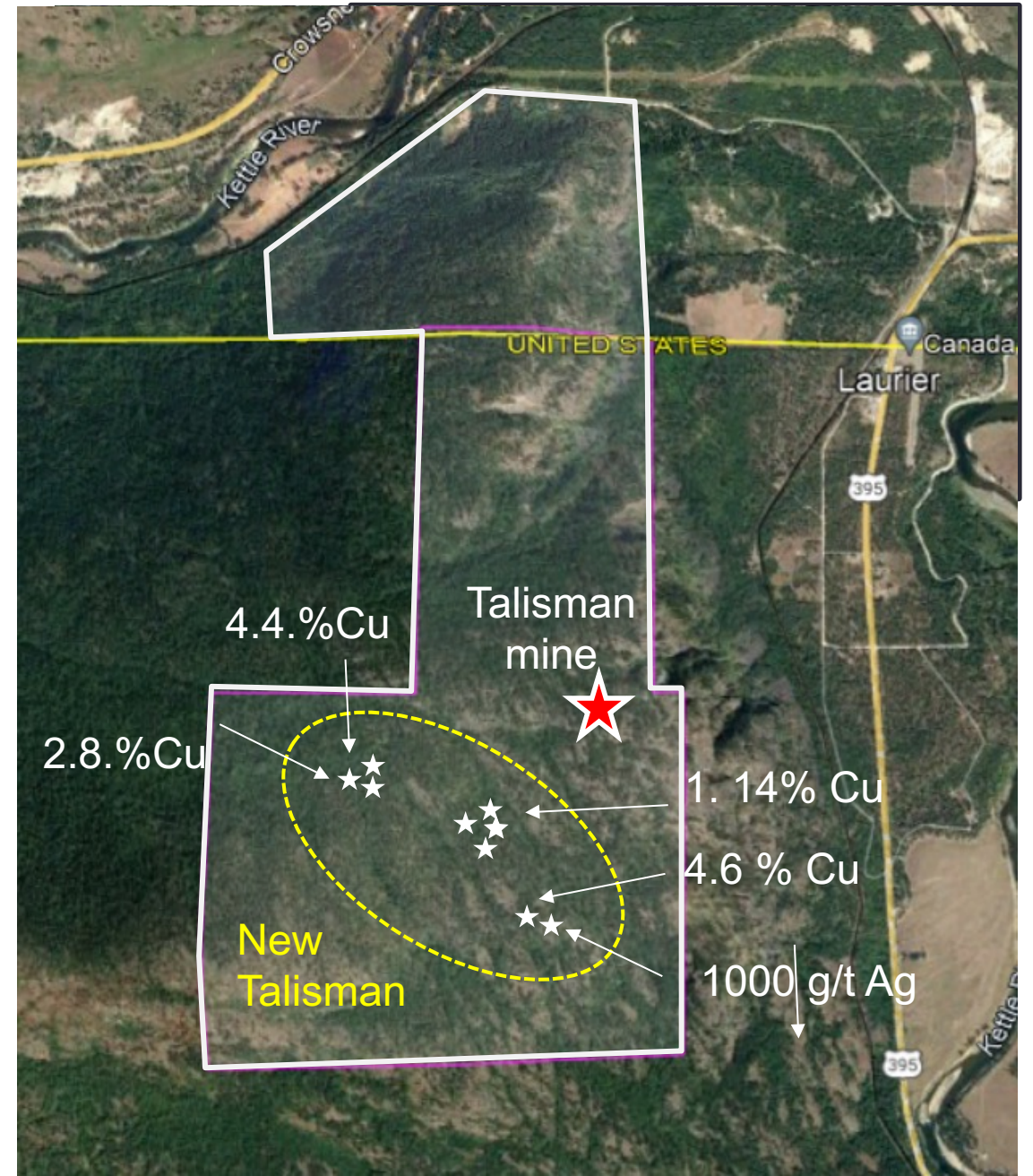


- 6.5 G/T AU / 3.05 METRES
- INCL 12.2 G/T AU / 1.52 METRES AND
- LOCATED ~ HALFWAY BETWEEN THE OVERLOOK AND KEY WEST MINES WHICH ARE 1000 METRES APART
- OVERLOOK AND KEY WEST MINES WERE PRODUCED ~ 500,000 OUNCES OF GOLD AT AN AVERAGE GRADE OF ABOUT 5 G/T.
- MINIMAL PAST EXPLORATION

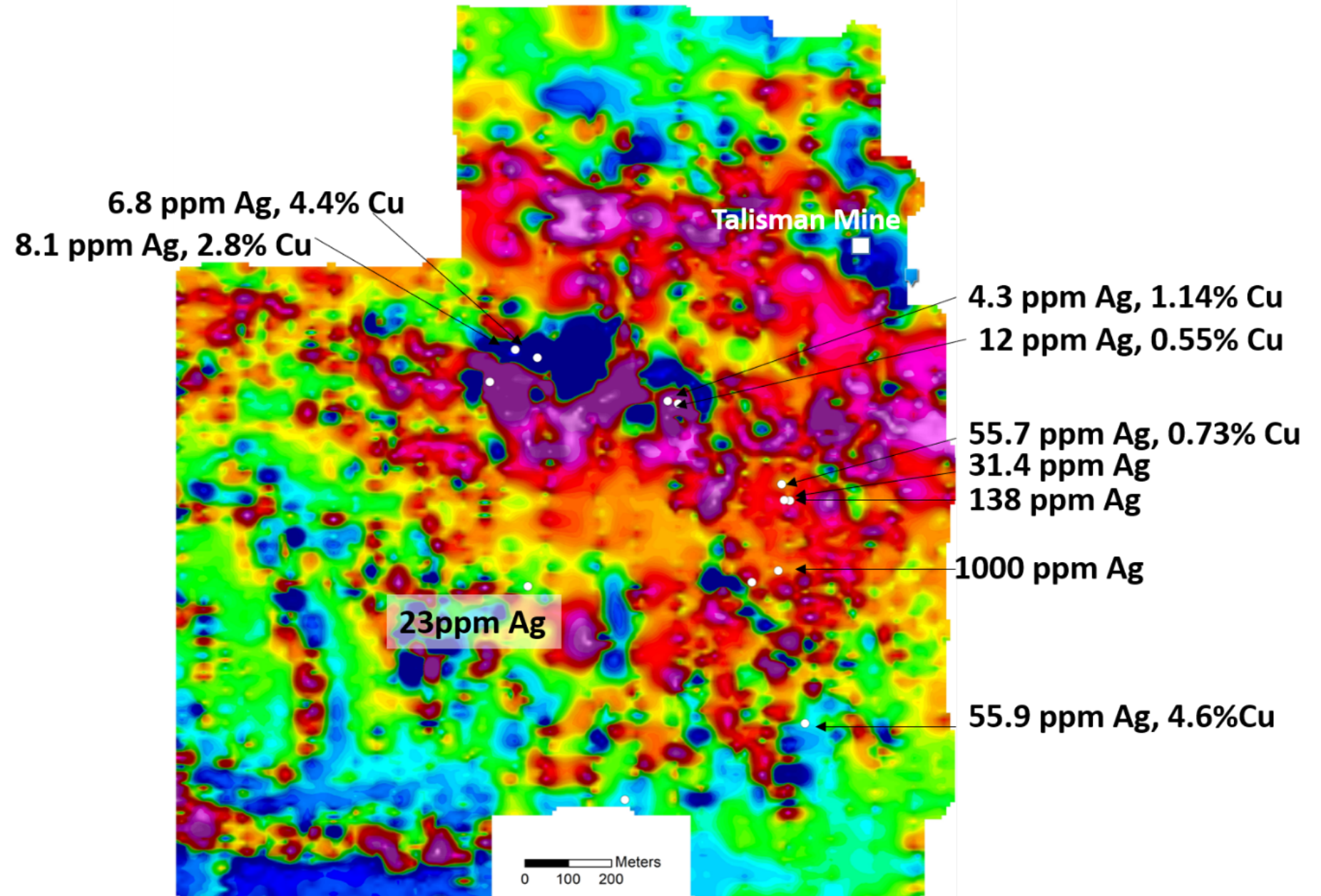




- 100 % OWNED TALISMAN PROJECT
- HIGH COPPER – SILVER GRADES
- POTENTIAL PARTNER PROJECT

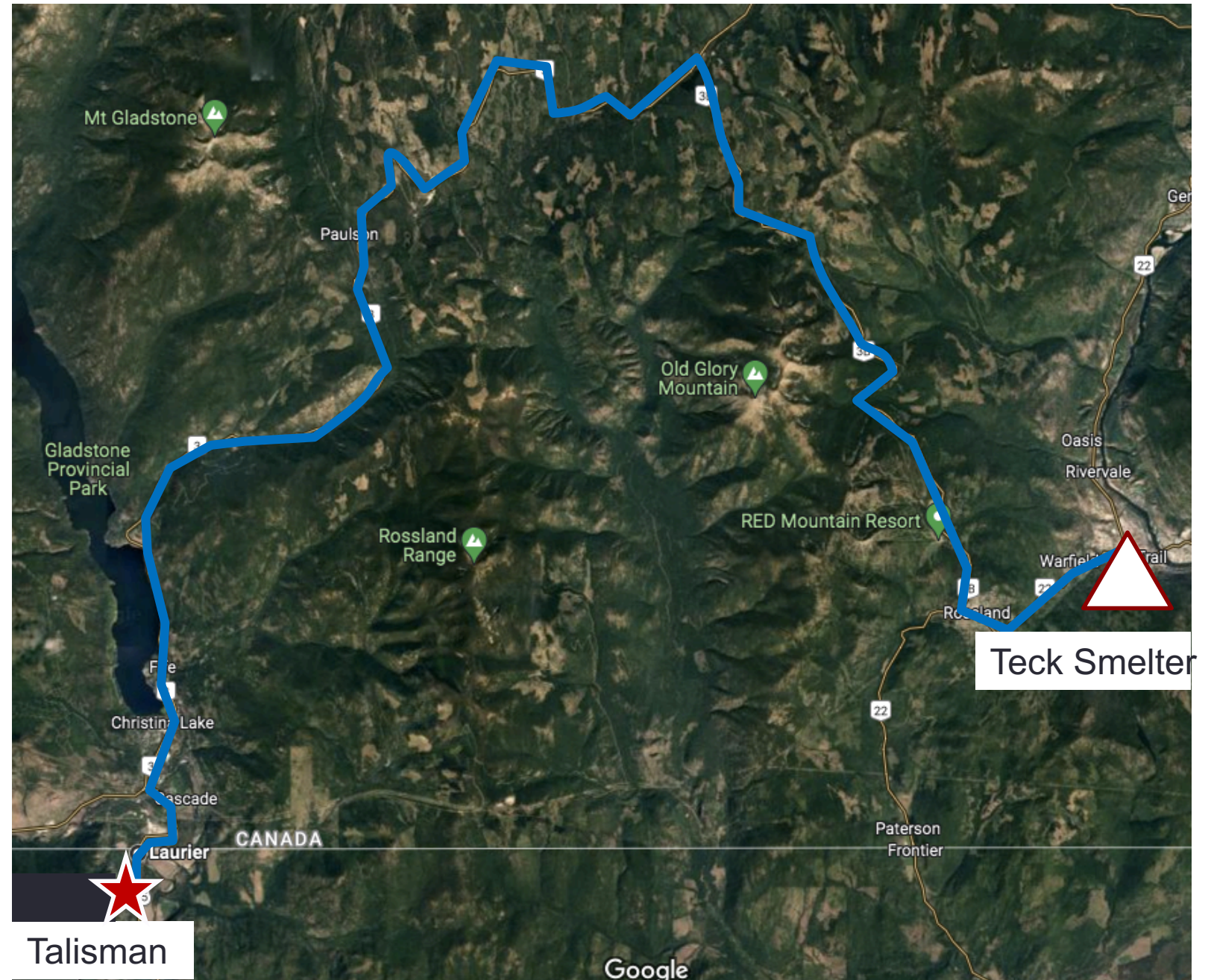








90 KM TO TECK SMELTER





## THE MANAGEMENT AND ADVISORS TEAM HAS SUCCESSFULLY TAKEN COMPANIES FROM PROJECT GENERATION TO PRODUCTION AND /OR ACQUISITION.

### MANAGEMENT

Chairman of the Board  
Yale Simpson

President and CEO  
Mark Kolebaba

Chief Financial Officer  
Mark T. Brown

### DIRECTORS

Mark Jones  
Christopher Harold  
Bernard Kahlert  
Alejandro Adams

### ADVISORS

Peter Cooper  
Graeme Currie  
Cecil Bond

TSX-V	ADZ
Price	\$0.05
Shares Outstanding	203,908,595
Warrants	23,669,167
Options	13,900,000
Fully Diluted	241,477,762

Share Structure – May 2022

**HEAD OFFICE**

ADAMERA MINERALS CORP.  
11TH FLOOR - 1111 MELVILLE ST.  
VANCOUVER, BC  
CANADA, V6E 3V6



# Thank You!

LINKEDIN : [@ADAMERAMINERALS](#)

TWITTER: [ADZ\\_ADAMERA](#)

FACEBOOK: [Adamera Minerals](#)

EMAIL: [INFO@ADAMERA.COM](mailto:INFO@ADAMERA.COM)

PHONE: +1.604.689.2010

FAX: +1.604.484.7143

**Forward Looking Statement**

Information in this presentation may be forward looking. Forward looking information is subject to known and unknown risks, uncertainties and other factors, including potentially inaccurate assumptions, which may cause the actual results, performance or achievements to be materially different from the future results, performance or achievements expected or implied by the forward looking information which speaks only as of the date of this presentation. No invitation to purchase securities is being made. Project QP's are listed in the news release on the company's website. For more detailed information about the Company, please see our Annual Information form, Financial Statements, and other materials available from [www.sedar.com](http://www.sedar.com).